

**Oregon Health Authority  
Addictions and Mental Health Division**

Response to Children's Mental Health:  
Ensuring Access and Sustaining Services

Audit Report

Update: June 7, 2013

This report is required by HB 3291 which directs state agencies audited by the Secretary of State to disclose the results of the audit and submit a written report about changes the agency is making to implement audit recommendations.

Secretary of State Audit number 2012-16, May 14, 2012, entitled "Children's Mental Health: Ensuring Access and Sustaining Services" made recommendations to Oregon Health Authority (OHA), Addictions and Mental Health Division (Division), Children's Mental Health, to develop better information on service utilization by population and to improve the continuity of mental health care for children. The full audit, including OHA response, is available from the Secretary of State's web page at the following address:

[http://www.sos.state.or.us/audits/pages/state\\_audits/full/2012/2012-16.pdf](http://www.sos.state.or.us/audits/pages/state_audits/full/2012/2012-16.pdf). This report details the recommendations and updates in AMH actions to meet the recommendations.

**Recommendation:**

- 1. The audit final report "recommends the Division, in its administration of mental health services, develop better information on service utilization by population. These efforts could include:**
  - **Developing and reporting comparative data to monitor service utilization by population, including Hispanic children, girls aged 2-13, and younger children;**
  - **Reviewing and comparing strategies that address utilization differences;**
  - **Developing targets that assist in addressing differences between populations; and**
  - **Identifying and disseminating best practices for increasing the use of mental health assessments for younger-aged children."**

**Agency Actions:**

Since the most recent (October 30, 2012) report, Addictions and Mental Health Division has:

- Continued development of ongoing quarterly reports reflecting *population-specific utilization* of Mental Health Services, including the focus populations of Hispanic children, girls aged 2-13, and younger children.
- *Identified mental health service utilization target ranges* for focus populations based on review of comparable national and state-specific estimates of the prevalence of mental health disorders, need for, and utilization of Mental Health Services within specific focus populations.
- *Compared 2009-2011 utilization rates, statewide and by Mental Health Organization (MHO)*, with utilization target ranges identified.
- *Developed Coordinated Care Organization (CCO) specific reports with utilization target ranges* based on data from 2009-2011. This information will be included in ongoing quarterly reports to CCOs.
- *Continued to disseminate Parent Child Interaction Therapy (PCIT)*, an evidence-based practice therapy for young children 2-7 years of age with disruptive behavior disorders. AMH has provided funds to Jackson, Marion, Washington and Yamhill counties to develop their PCIT programs and infrastructure to support dissemination of fidelity PCIT. Staff have been supported in becoming certified as trainers in PCIT and once certified have provided training and technical assistance to counties interested in developing this practice in their clinical settings.
- Supported an annual statewide PCIT conference with national experts to train early childhood providers in PCIT.
- Incentivized PCIT sites receiving grants to serve children from Hispanic families in proportion to the county population.
- Supported the piloting of PCIT for 0-2 year olds and their parents.
- Supported Teacher/Child Interaction Therapy development to increase teacher competence in managing behaviors of young children at Head Start Centers and Migrant Head Start Centers.
- Provided training on assessment and evidence-based treatment of young children birth through 5 years of age using Child-Parent Psychotherapy.
- *Participated in development of standardized screening of young children for social/emotional challenges* to identify younger children and increase referrals for younger children to appropriate mental health treatment.

**Recommendation:**

- 2. The audit report also recommended that the Division “improve the continuity of mental health care for children by:**
  - **Ensuring that assessed children who need and desire mental health services receive services in a timely fashion;**
  - **Ensuring that the reasons for children experiencing lengthy breaks in services are captured in case file documentation;**
  - **Periodically analyzing the reasons for service breaks; and**
  - **Ensuring that providers make adequate efforts to re-engage children when unplanned service breaks occur and that they document these efforts.”**

**Agency Actions:**

Since the October 30, 2012 report, Addictions and Mental Health Division has:

- Analyzed agency encounter data from July 1 to December 31, 2011, to *explore distribution of service gaps across levels of care.*
- Analyzed service utilization data prior to each site review to *identify gaps in accessing services following a mental health assessment, service breaks or during transitions from one type of mental health service to another.*
- *Incorporated the review of service breaks, and documentation of efforts to re-engage clients, into the regular site review of providers.*
- *Conducted follow up to provider agencies by AMH Compliance Specialists who have reviewed documentation in a sample of client charts to estimate the extent to which gaps in services and re-engagement efforts are adequately documented.*
- *Established monitoring mechanisms for CCO compliance with an incentivized outcome measure for clinical follow up within 14 days of transition from a hospital or residential treatment program.*
- *Incorporated into the CCO Transformation Plan Guidance plans to facilitate effective coordination of care for individuals transitioning across levels of care including hospitalization, residential care and Secure Children's Inpatient Program (SAIP) and Secure Adolescent Inpatient Program (SCIP).*

AMH appreciates the opportunity to respond to this audit by the Secretary of State as additional means to improve the system of supports and services for children with mental health challenges. For additional information, contact Steve Kuhn, Interim Children's Mental Health Manager at: [Steve.J.Kuhn@state.or.us](mailto:Steve.J.Kuhn@state.or.us)

## Prevalence Ranges and Utilization History for Identified Population Groups

The Secretary of State's audit report of children's mental health services released in May of 2012<sup>1</sup> recommends that AMH "...develop better information on service utilization by population." The report identifies three groups of children whose utilization of mental health services was lower than expected, based on their proportion among children enrolled in Oregon Health Plan (OHP). These groups are:

- Girls between 2 and 13 years of age
- Children of Hispanic ethnicity, age 0-17 years
- Young children, less than 7 years of age

In response, AMH has committed to development of quarterly reporting of population-specific utilization data and establishment of target ranges for Coordinated Care Organizations (CCOs) based on local utilization history and estimated prevalence within child populations.

The initial phase of this work involved three tasks:

1. Determine target ranges for utilization of mental health services overall and within specific subpopulations according to income level, age, gender, and ethnicity, based on recent research on the prevalence of mental health needs among children in these groups.
2. Examine historical mental health services utilization rates and trends among OHP-eligible children overall and within the three subpopulations identified in the audit report: girls between 2 and 13 years of age; young children, less than 7 years of age; and children of Hispanic ethnicity, age 0-17 years.
3. Within each of these populations, compare utilization of mental health services over a three-year time span with estimated prevalence ranges.

This report presents summarizes the results statewide and presents data for each Mental Health Organization (MHO). Its purpose is to provide a foundation for reporting, planning, and implementation of strategies to improve access to mental health services for these populations.

---

<sup>1</sup> Oregon Secretary of State. 2012. Children's Mental Health: Ensuring Access and Sustaining Services. [http://www.sos.state.or.us/audits/pages/state\\_audits/full/2012/2012-16.pdf](http://www.sos.state.or.us/audits/pages/state_audits/full/2012/2012-16.pdf).

### Prevalence of Mental Health Needs in Selected Child Populations

An AMH work group assembled and reviewed research articles and publications estimating the prevalence of mental health needs among children nationwide and in Oregon. The estimates were prioritized based on scope and subgroups, methods used, timeliness, and credibility of the agency or organization conducting the research.

Results from the selected sources were organized into grids according to available subpopulation estimates within each focus population. Appendix B lists the data sources included in the grids. Based on these estimates, the work group proposed prevalence ranges within each population to serve as target utilization rates:

- Children age 0-6: between 2.0% and 5.3%
- Girls age 2-13: between 2.1% and 8.9%
- Hispanic children: between 4.1% and 9.0%

The Tables 1-3 show the estimates that were considered by the work group.

**Table 1: Estimates of the prevalence of mental health needs among young children**

Children age 0-6 years	All incomes			Income <200% FPL	
	Age 0-5	Age 2-6	Age 4-7	Age 0-5	Age 2-6
2007 NSCH - Child has mental health condition(s), moderate or severe (U.S.)		3.3%			
2007 NSCH - Child has mental health condition(s), moderate or severe (Oregon)		1.9%			4.0%
2009 ACS-CPES - SED population prevalence, Federal Register (Oregon)	7.6%				
2009 ACS-CPES - SED household prevalence, Federal Register (Oregon)	7.6%			8.9%	
2001-2007 NHIS - SDQ and/or moderate or severe overall difficulties (U.S.)			5.3%		
2006 NHIS - emotional-behavioral difficulties (U.S.)			4.0%		
2009 NHIS - emotional-behavioral difficulties (U.S.)			3.2%		
2007 NSCH - Ongoing need for mental health services (U.S.)	2.0%				
2007 NSCH - Ongoing need for mental health services (Oregon)	1.3%				
Range of prevalence estimates	1.3-7.6	1.9-3.3	3.2-5.3	8.9	4.0
<b>Proposed Range: 2.0-5.3%</b>					
<b>2011 OHP Avg Quarterly Utilization (Range among MHOs): 1.7% (1.3-2.7)</b>					

**Table 2: Estimates of the prevalence of mental health needs among females**

Girls age 2-13	All incomes							Income <200% FPL	
	Age 0-17	Age 2-13	Age 4-7	Age 4-17	Age 8-10	Age 10-13	Age 11-14	Age 0-17	Age 2-13
2007 NSCH - Child has mental health condition(s), moderate or severe (U.S.)		3.7%							
2007 NSCH - Child has mental health condition(s), moderate or severe (Oregon)		4.2%							4.6%
2009 ACS-CPES - SED population prevalence, Federal Register (Oregon)	7.4%								
2009 ACS-CPES - SED household prevalence, Federal Register (Oregon)	7.4%							8.9%	
2001-2007 NHIS - SDQ and/or moderate or severe overall difficulties (U.S.)				5.9%					
2006 NHIS - Emotional-behavioral difficulties (U.S.)			2.6%	3.3%	3.0%		3.8%		
2009 NHIS - Emotional-behavioral difficulties (U.S.)			2.1%	3.9%	4.4%		4.1%		
2007 NSCH - Ongoing need for mental health services (U.S.)	4.0%								
2007 NSCH - Ongoing need for mental health services (Oregon)	6.0%								
2011 SWS - At risk for psychological distress (Oregon grades 6,8,11)						7.9%			
2011 SWS - Fair or poor emotional-mental health (Oregon grades 6,8,11)						10.6%			
2011 SWS - Suicide attempt, self-report (Oregon grades 6,8,11)						7.2%			
<i>Range of prevalence estimates</i>	4.0-7.4	3.7-4.2	2.1-2.6	3.3-5.9	3.0-4.4	7.2-10.6	3.8-4.1	8.9	4.6
<b>Proposed Range: 2.1-8.9%</b>									
<b>2011 OHP Avg Quarterly Utilization (Range among MHOs): 4.1% (3.4-7.0)</b>									

**Table 3: Estimates of the prevalence of mental health needs among children of Hispanic or Latino ethnicity**

Hispanic children age 0-17	All incomes & languages				Income < 200% FPL		English language			Spanish language		
	Age 0-17	Age 2-17	Age 4-17	Age 10-18	Age 0-17	Age 2-17	Age 0-17	Age 4-17	Age 10-18	Age 0-17	Age 4-17	Age 10-18
2007 NSCH - Child has mental health condition(s), mod. or severe (U.S.)		6.0%										
2007 NSCH - Child has mental health condition(s), mod. or severe (Oregon)		4.0%				4.9%						
2009 ACS-CPES - SED population prevalence, Federal Register (Oregon)	8.3%											
2009 ACS-CPES - SED household prevalence, Federal Register (Oregon)	8.2%				9.0%							
2001-2007 NHIS - SDQ and/or moderate or severe difficulties (U.S.)								7.6%			4.8%	
2006 NHIS - Emotional-behavioral difficulties (U.S.)			3.6%									
2009 NHIS - Emotional-behavioral difficulties (U.S.)			4.1%									
2007 NSCH - Ongoing need for mental health services (U.S.)	4.5%						5.7%			3.4%		
2007 NSCH - Ongoing need for mental health services (Oregon)	4.1%						5.2%			3.5%		
2011 SWS - At risk for psychological distress (Oregon grades 6,8,11)				7.2%					7.9%			5.8%
2011 SWS - Fair or poor emotional-mental health (Oregon grades 6,8,11)				10.7%					12.3%			8.0%
2011 SWS - Suicide attempt, self-report (Oregon grades 6,8,11)				8.7%					8.6%			7.7%
<i>Range of prevalence estimates</i>	4.1-8.3	4.0-6.0	4.1-7.6	8.7-10.7	9.0	4.9	5.2-5.7	7.6	7.9-12.3	3.4-3.5	4.8	5.8-8.0
<b>Proposed Range: 4.1-9.0%</b>												
<b>2011 OHP Avg Quarterly Utilization (Range among MHOs): 2.5% (1.8-2.8)</b>												



## OHP Mental Health Services Utilization Rates and Trends, 2009-2011

Utilization is defined as the number of children within a specified group (e.g., Medicaid eligible or enrolled girls age 2-13) who received any mental health services during a specified time period, divided by the total number of children in that group, and is usually expressed as a percentage. Many factors influence children's utilization of mental health care services. Economic, cultural, environmental, personal, and family characteristics are examples of such factors. Utilization rates are also subject to the ways in which mental health services are provided, such as location, cost, convenience, quality, and cultural competence. Rates of utilization can reveal strengths and needs in various regions in order to support identification and dissemination of strategies associated with higher levels of utilization among children in specific demographic groups.

This section is based on enrollment and encounter data for calendar years 2009, 2010, and 2011, extracted from the Oregon Medicaid Management Information System (MMIS) in August, 2012. The data were used to examine utilization rates for all eligible-enrolled children (ages 0-17) and within each of the populations identified in the audit report. Detailed tables used to construct the charts shown here are located in Appendix A of this report.

Over the course of the three years studied, the number of children in Oregon with Medicaid health coverage increased dramatically, as did the number receiving mental health services (Table 4). However, compared to all children, children within the identified groups were less likely to receive mental health services during either the first or last quarter of the study period, despite increased utilization among Hispanic children and young children.

**Table 4: Statewide children Medicaid enrolled/eligible and received mental health services, Jan-Mar 2009 and Oct-Dec 2011**

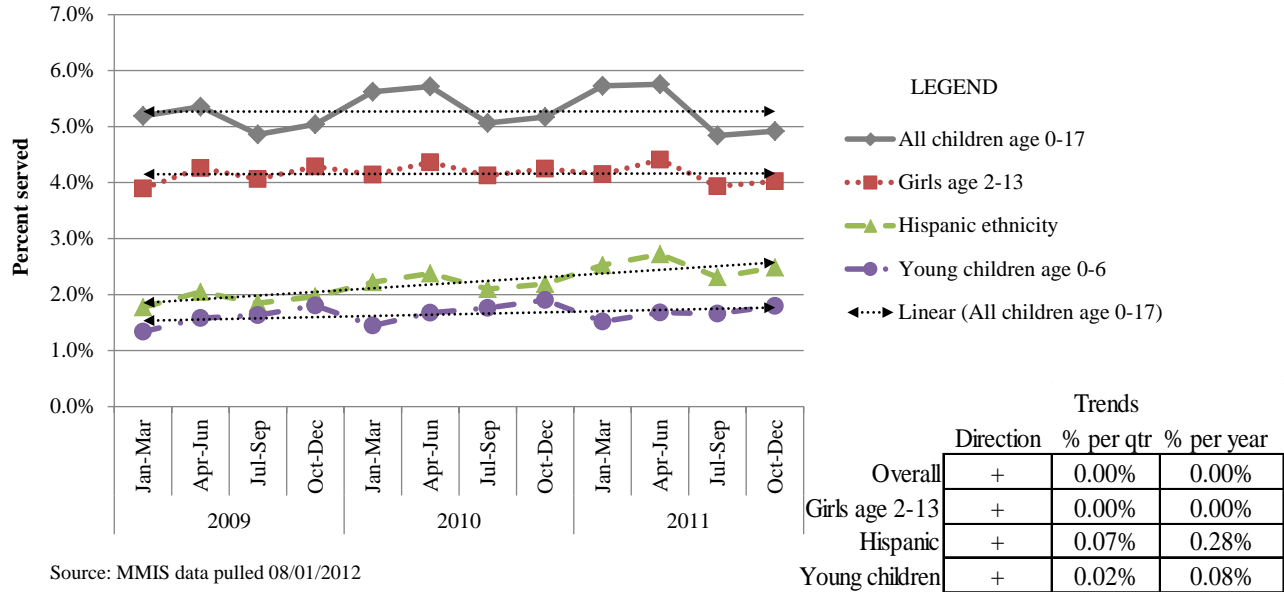
	Number Enrolled/Eligible			Number Served			Percent Served		
	First Qtr 2009	Last Qtr 2011	% Change	First Qtr 2009	Last Qtr 2011	% Change	First Qtr 2009	Last Qtr 2011	% Change
All children age 0-17	263,323	369,352	40.3%	13,665	18,178	33.0%	5.2%	4.9%	-5.2%
Girls age 2-13	87,777	123,490	40.7%	3,417	4,966	45.3%	3.9%	4.0%	3.3%
Hispanic children age 0-17	85,100	110,082	29.4%	1,507	2,733	81.4%	1.8%	2.5%	40.2%
Young children age 0-6	132,702	167,919	26.5%	1,775	3,017	70.0%	1.3%	1.8%	34.3%

Source data in Appendix A tables



Figure 1 (below) illustrates statewide utilization of mental health services by children eligible for or enrolled in Medicaid through Oregon Health Plan (OHP) by quarter in 2009, 2010, and 2011. Results are shown for all children age 0-17 and for each of the groups identified in the audit report. They indicate that over the entire three-year study period utilization rates in all three groups were consistently lower than the rates for all children combined.

**Figure 1: Statewide quarterly utilization of mental health services, OHP enrolled/eligible children, 2009-2011**



Source: MMIS data pulled 08/01/2012

Among all children (top line, Figure 1) utilization followed a seasonal cycle with higher rates in winter and spring and lower rates in summer and fall. Trend analysis indicated no overall increase or decrease over the three year period.

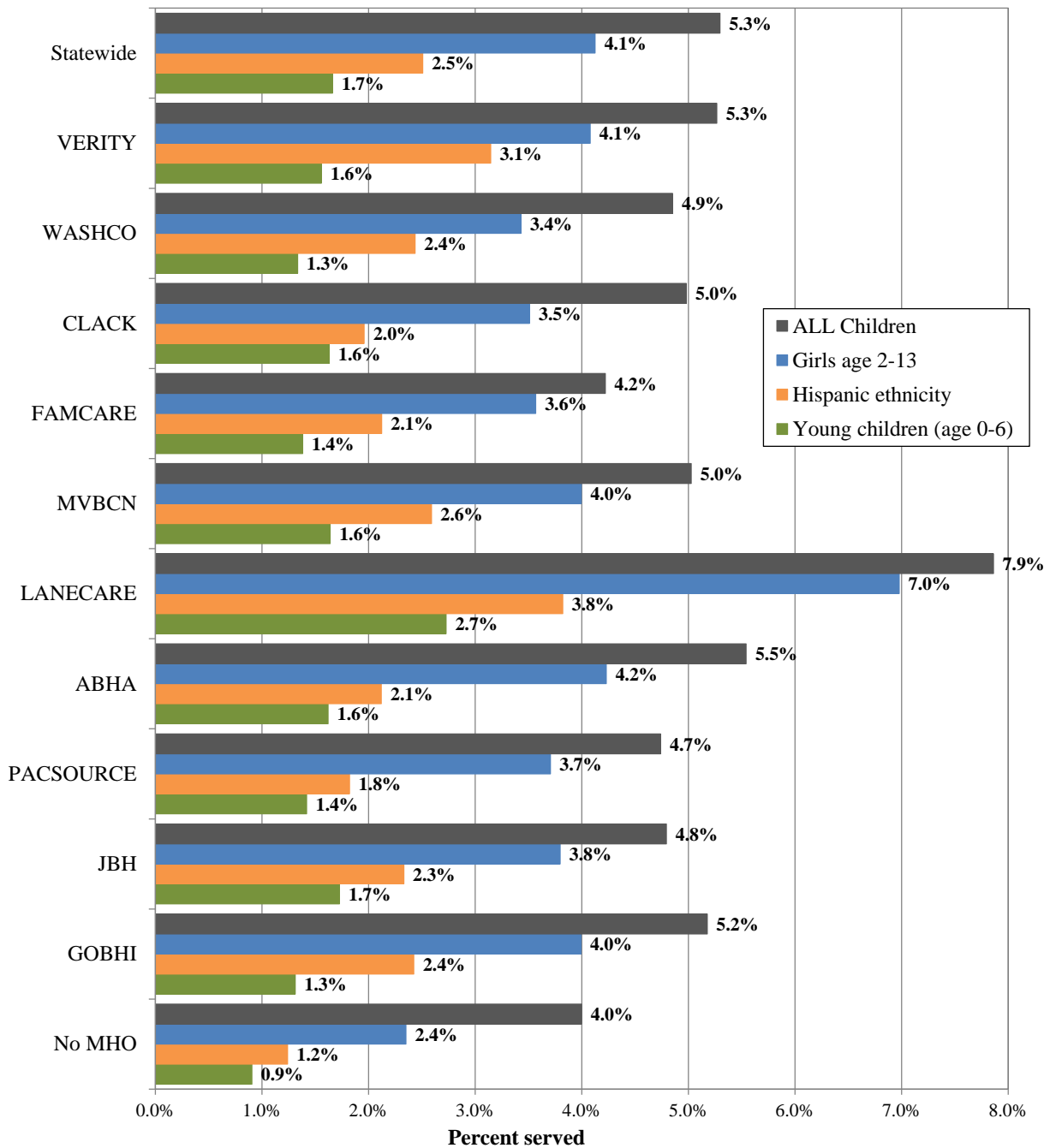
Statewide utilization rates among younger girls (second line, Figure 1) were closest to the rates for all children – always within 1.5 percentage points below. The percentage of girls served varied little, hovering between 3.9% and 4.4%. Like the rates for all children, there was no appreciable change over time.

Among Hispanic children utilization rates were 3 to 3.4 percentage points lower than for all children until the last two quarters of 2011. The percentage of children receiving mental health services ranged from 1.8% to 2.7%, increasing at a rate of 0.3% annually (Figure 1, third line).

Utilization was lowest among young children each quarter and never reached two percent (Figure 1, bottom line). The comparatively small proportion of young children served may reflect the fact that mental health problems do not typically manifest until age 3 or older, compounded by increased emphasis on enrolling eligible children in OHP at birth.

To compare utilization among MHOs, quarterly rates for calendar year 2011 were averaged. Figure 2 shows average 2011 quarterly utilization rates by child population and MHO. Utilization rates within MHOs are remarkably similar to the patterns observed statewide, with rates lowest among young children, slightly higher among Hispanic children, highest among younger girls, and all lower than the overall rate. Lane Care is notable for having exceptionally high utilization overall and among girls age 2-13.

**Figure 2: Average quarterly utilization of mental health services, children OHP enrolled or eligible, by population and MHO, 2011 calendar year**



## Population-Specific Prevalence Ranges and OHP Utilization Rates

Comparison of utilization history with the target ranges determined earlier reveals different patterns over time for each of the identified child populations. Charts for each population are shown on pages 9-11. The data used to create these charts are shown in Table 6 and Table 7, Appendix A.

### *Girls age 2-13 years*

Statewide, about four percent of girls age 2-13 enrolled in or eligible for OHP received mental health services each quarter (Figure 3, page 9), within the expected prevalence range (2.1% - 8.9%) All of the MHOs maintained utilization rates within this range.

Figure 4 (page 9) shows for each MHO the average quarterly utilization in 2011 among younger girls (bars) compared to utilization by all children in that MHO (line). With a utilization rate of 7.0%, Lane Care stands out, but the rate for all children is also relatively high so that utilization among younger girls is still lower by just under one percentage point. Average rates in the other MHOs ranged from 3.4% to 4.2% in 2011.

### *Children of Hispanic ethnicity*

The proportion of Hispanic children served statewide was well below the expected prevalence range (4.1% - 9.0%) over the entire three year time span (Figure 5, page 10). Among MHOs even the highest utilization rates fell short of the target range all except one quarter. Even so, the modest increase over time that was noted at the state level was also observed among MHOs. Despite this increase the average quarterly utilization rate in 2011 fell below the expected prevalence range statewide and in all of the MHOs (Figure 6, page 10).

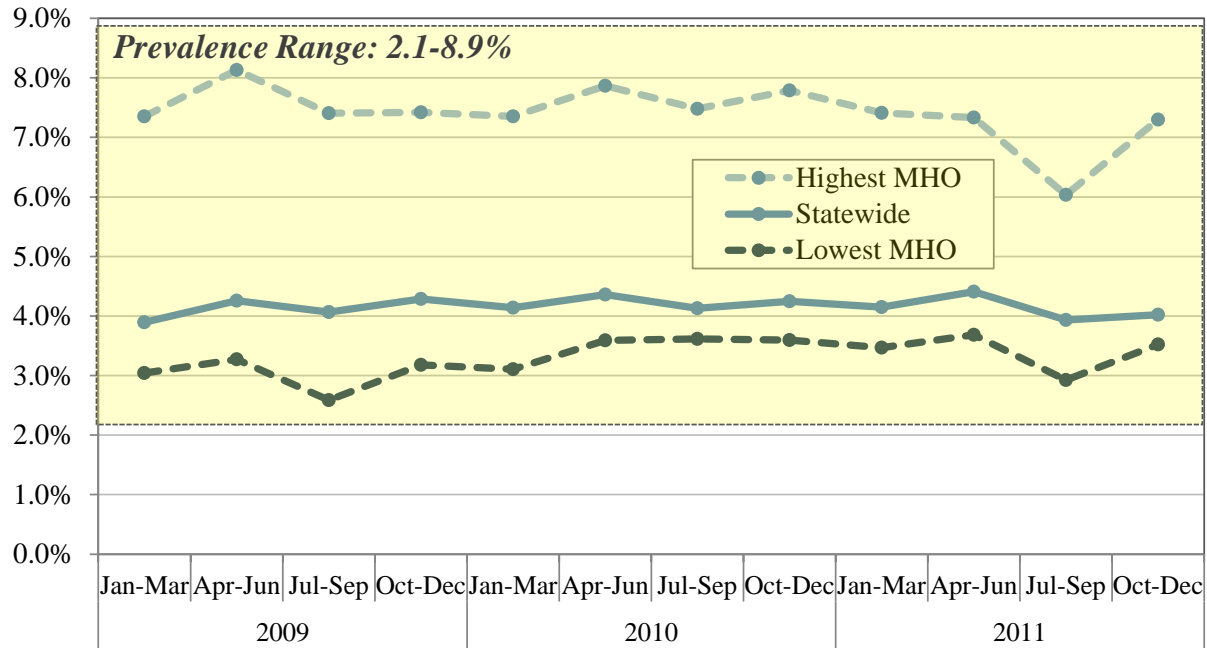
### *Young children age 0-6 years*

Although utilization rates among young children are similar to those for Hispanic children and youth, the expected prevalence is lower as well. As a result, statewide performance in 2009-2011 was closer to the target range (2.0% - 5.3%) over time and the highest MHO utilization rates fell within this range of (Figure 7, page 11).

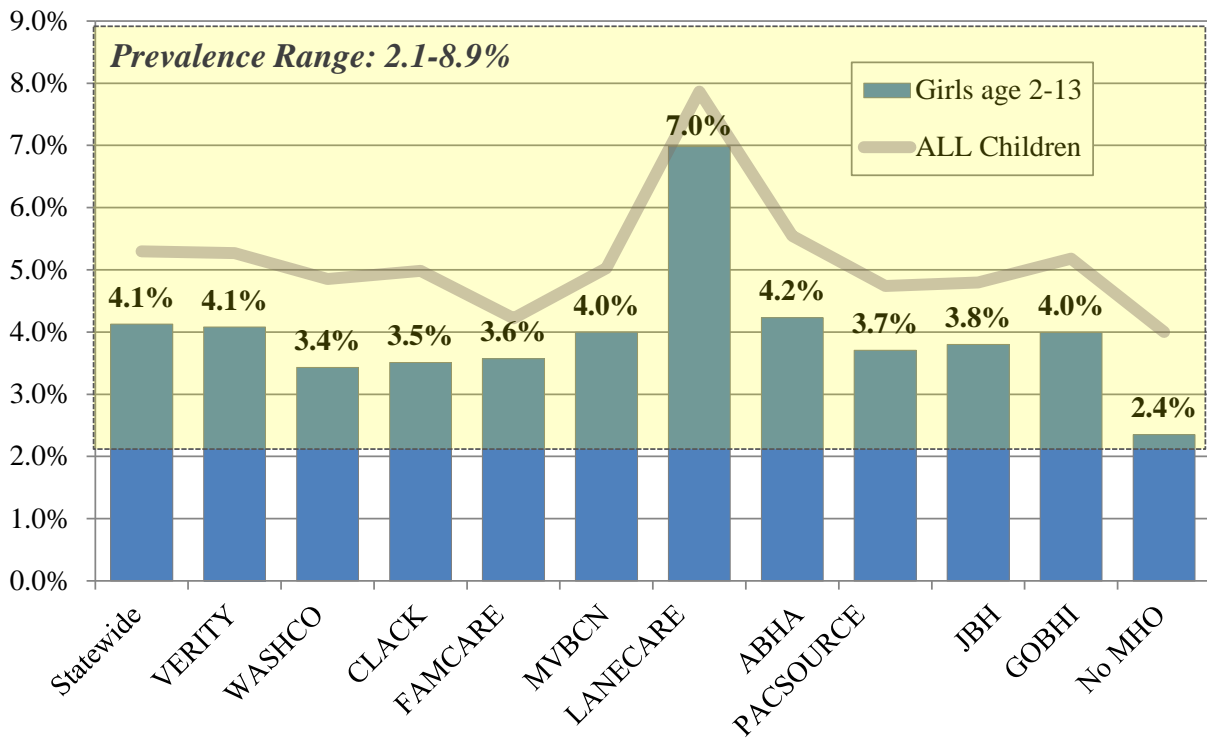
In 2011 (Figure 8, page 11), average quarterly utilization among young children was below the expected prevalence threshold statewide and in all except one MHO.

Charts: Girls age 2-13 years

**Figure 3: OHP eligible/enrolled girls age 2-13 – Percent receiving mental health services, by quarter, 2009-2011 – Statewide and MHO range**

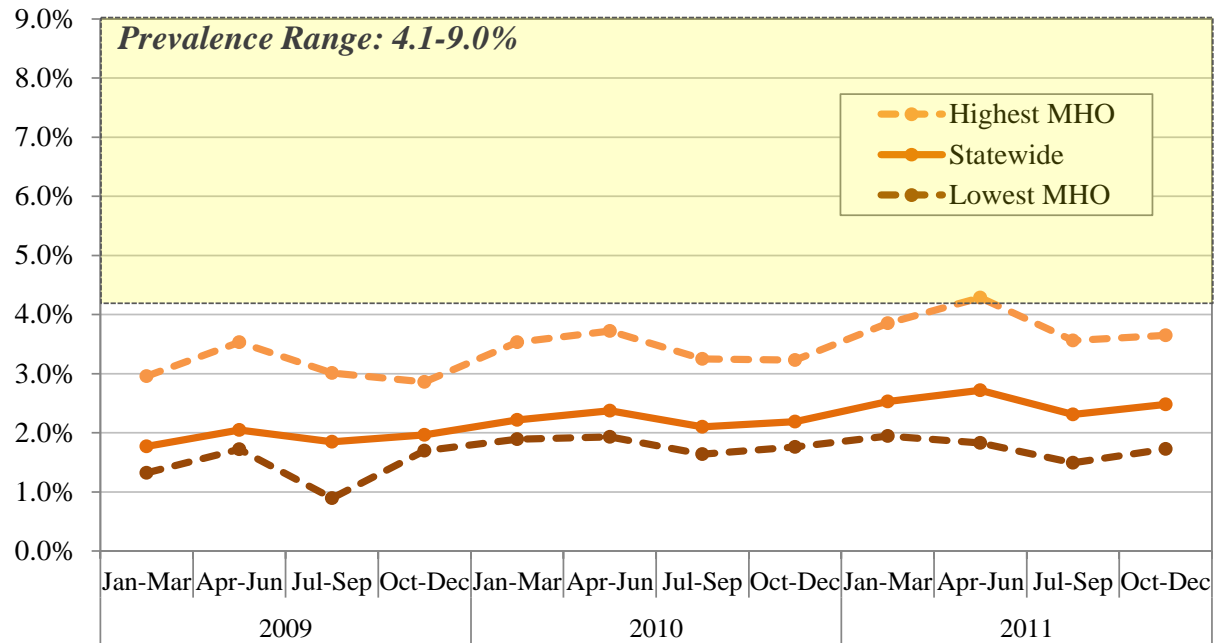


**Figure 4: OHP eligible/enrolled girls age 2-13 receiving mental health services, average quarterly utilization rate by MHO, 2011 calendar year**

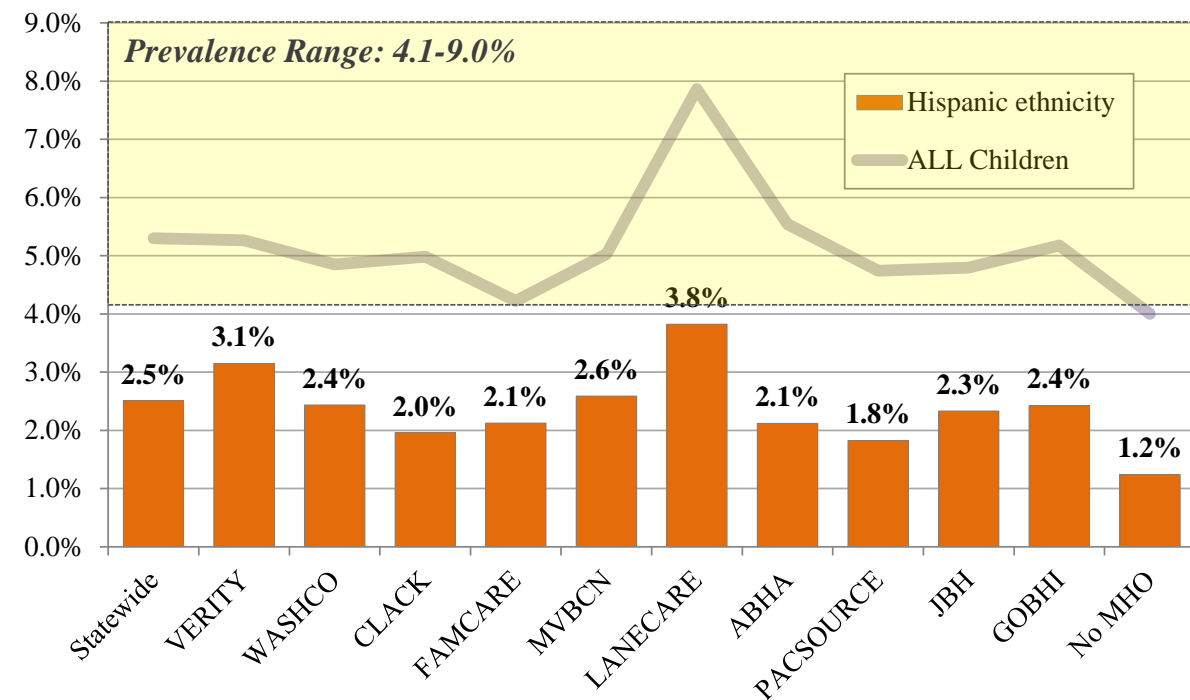


Charts: Children of Hispanic ethnicity

**Figure 5: OHP eligible/enrolled children, Hispanic or Latino: Percent receiving mental health services, by quarter, 2009-2011 – Statewide and MHO range**

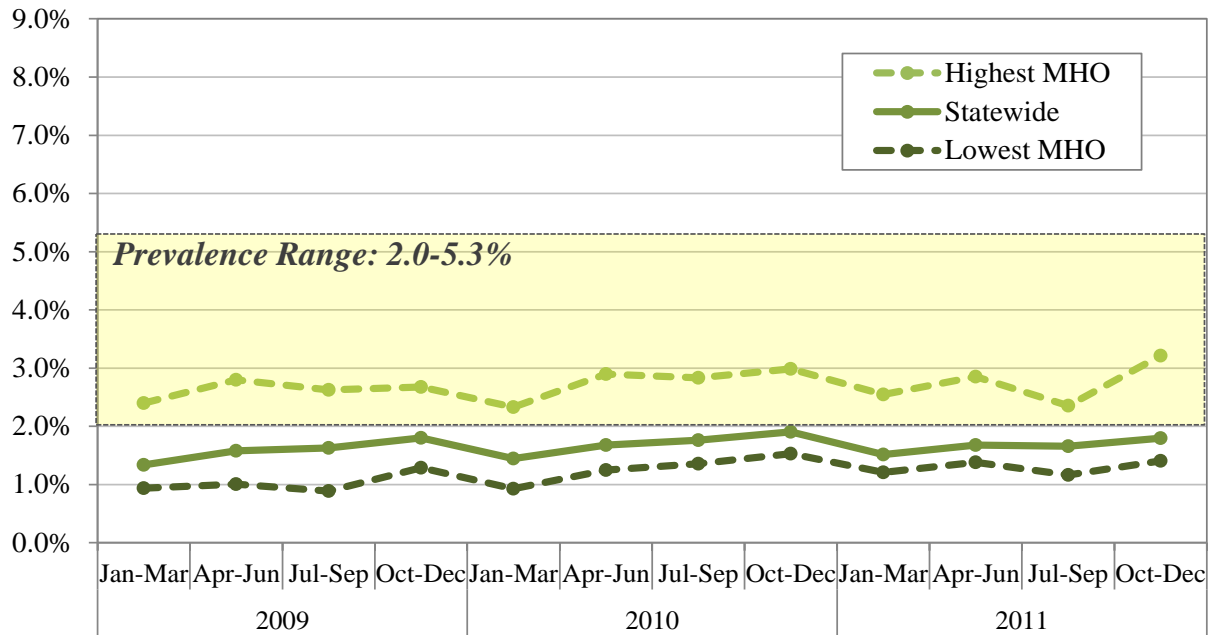


**Figure 6: OHP eligible/enrolled Hispanic and Latino children receiving mental health services, average quarterly utilization rate by MHO, 2011 calendar year**

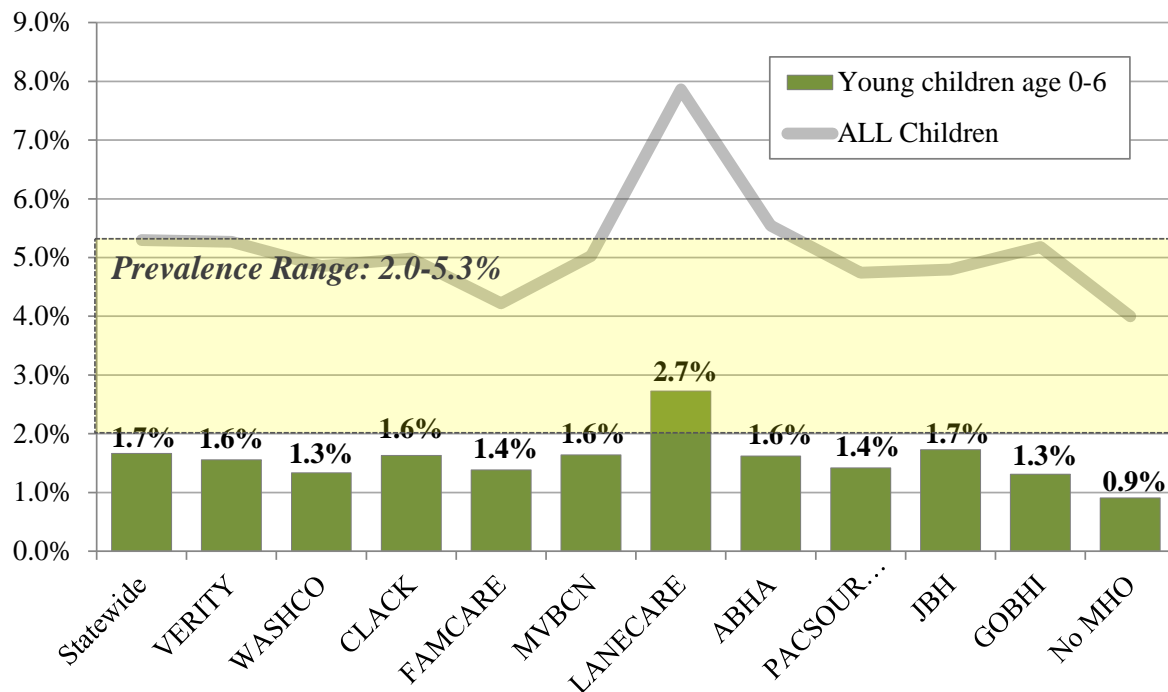


Charts: Young children age 0-6 years

**Figure 7: OHP eligible/enrolled children age 0-6: Percent receiving mental health services, by quarter, 2009-2011 – Statewide and MHO range**



**Figure 8: OHP eligible/enrolled young children age 0-6 receiving mental health services, average quarterly utilization rate by MHO, 2011 calendar year**



## **Mental Health Organizations**

This section contains four groups of 10 charts (one for each MHO).

The first group follows the format of Figure 1 (page 5), illustrating how utilization rates within the identified populations compare with each other and with all children in the MHO.

These are followed by a set of charts for each of the identified populations. These charts show quarterly utilization rates in comparison to expected prevalence range established by the AMH work group for each population. Comparable statewide results for these charts are shown in Figures 3, 5, and 7, on pages 9-11.

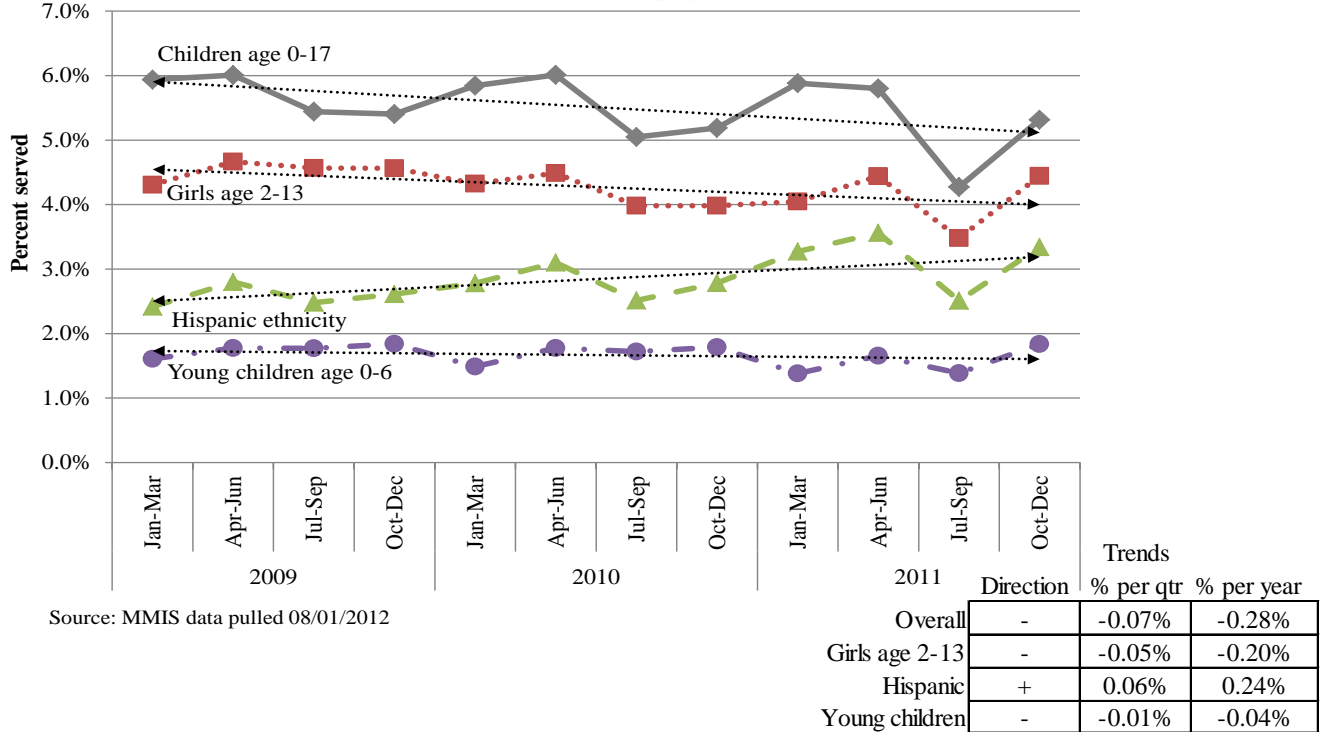
Data used to construct these charts are in Appendix A, Table 5.

*(Continued on next page)*



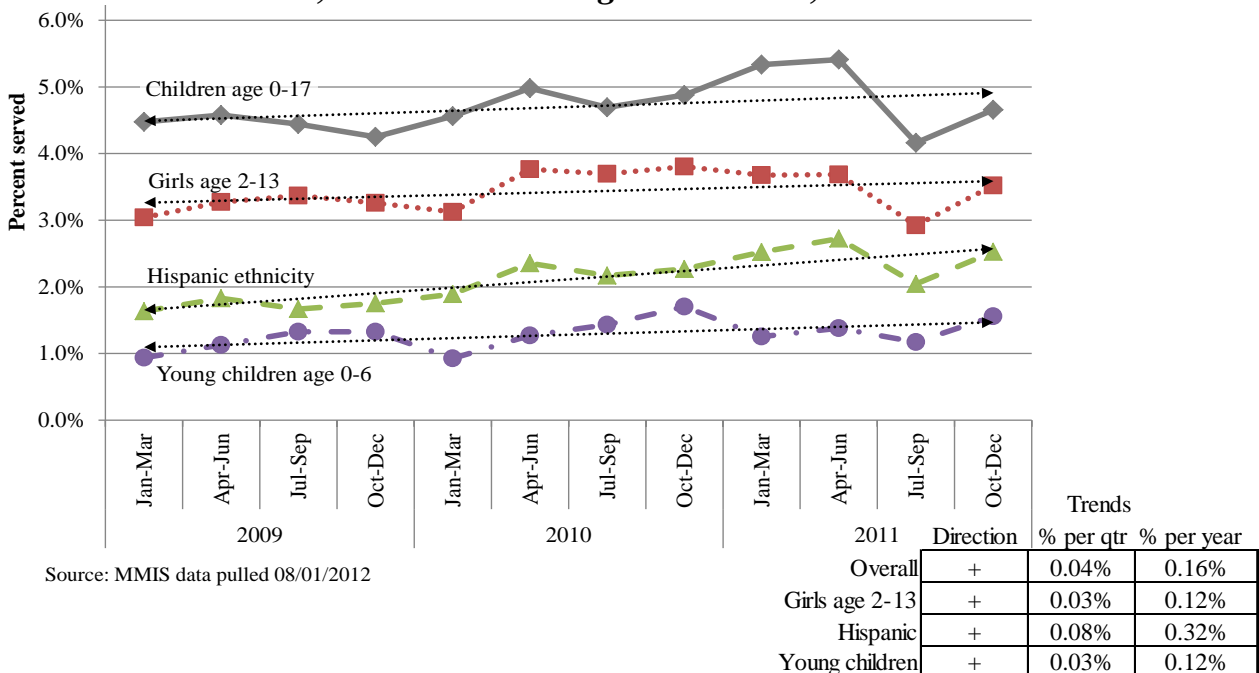
### MHO Charts: Utilization by child population – Portland Metropolitan Area & Mid-Columbia

**Figure 1.1: Multnomah Verity MHO – Quarterly utilization of mental health services, OHP enrolled/eligible children, 2009-2011**



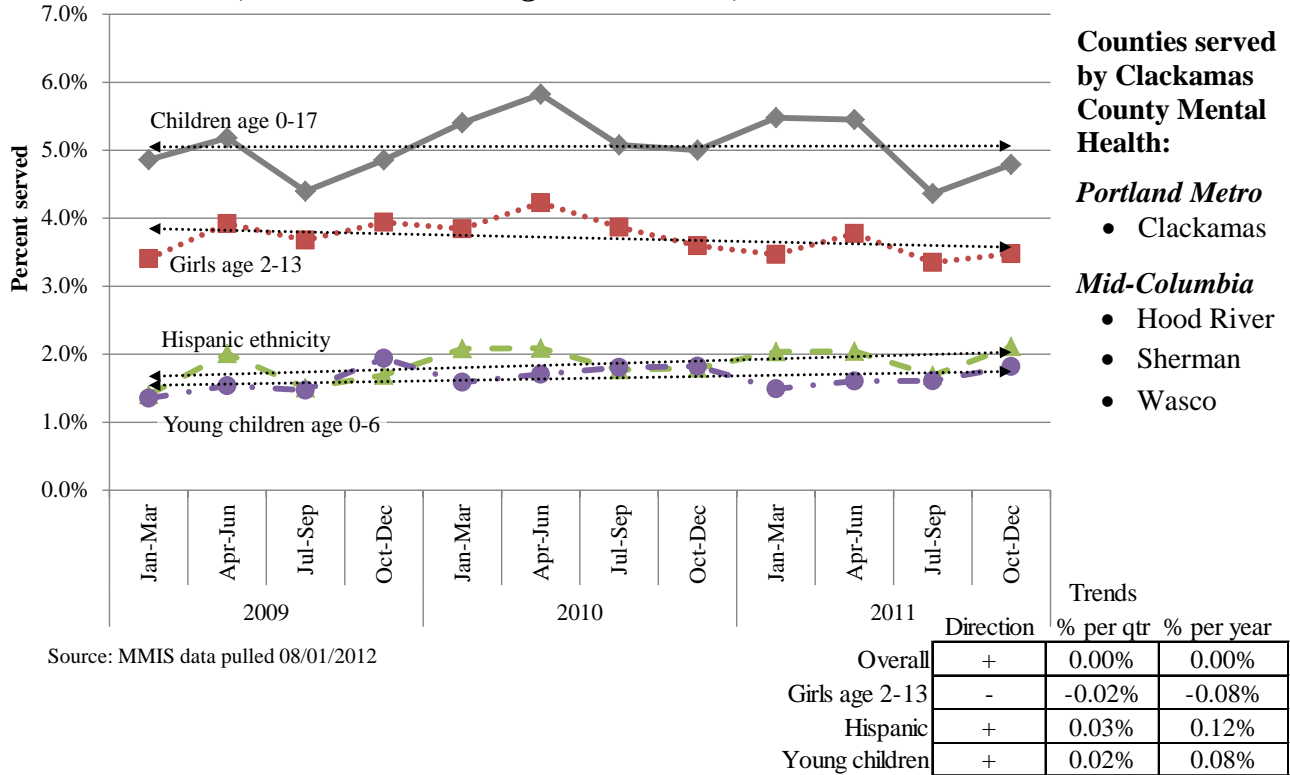
Source: MMIS data pulled 08/01/2012

**Figure 1.2: Washington County Health Department – Quarterly utilization of mental health services, OHP enrolled/eligible children, 2009-2011**

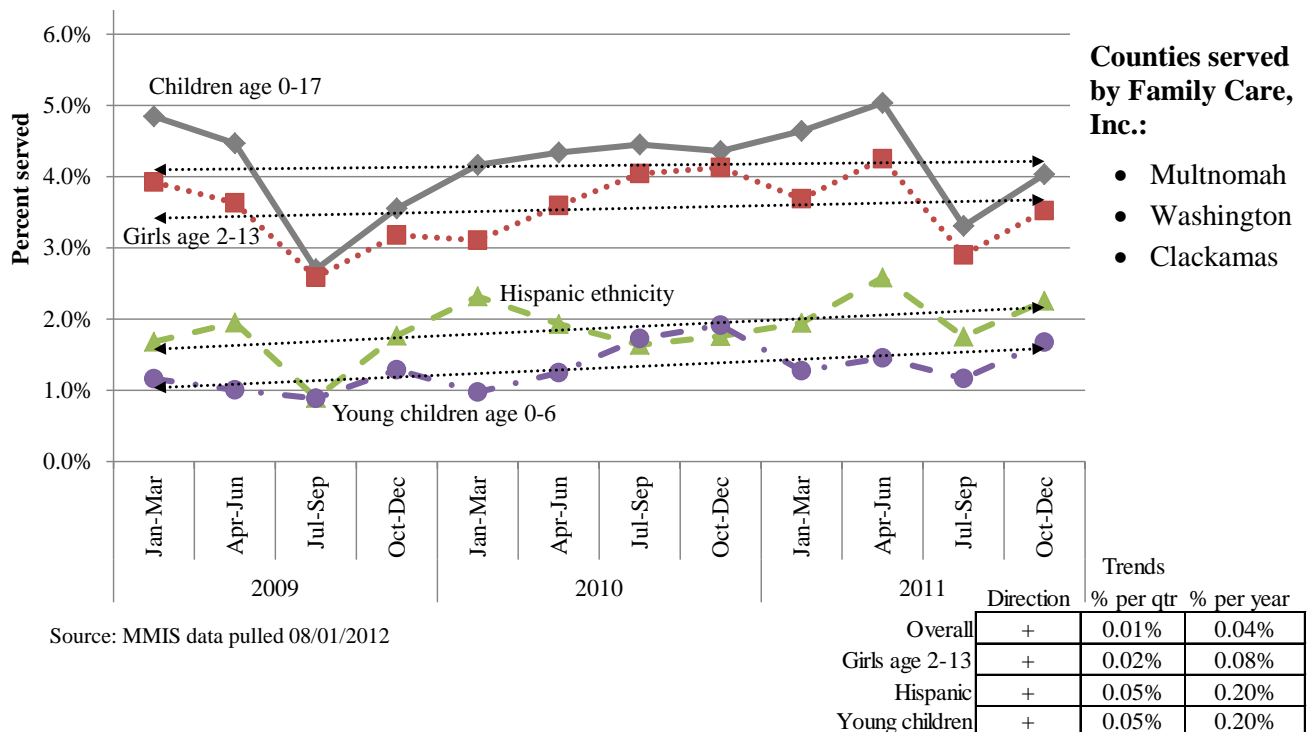


Source: MMIS data pulled 08/01/2012

**Figure 1.3: Clackamas County Mental Health – Quarterly utilization of mental health services, OHP enrolled/eligible children, 2009-2011**

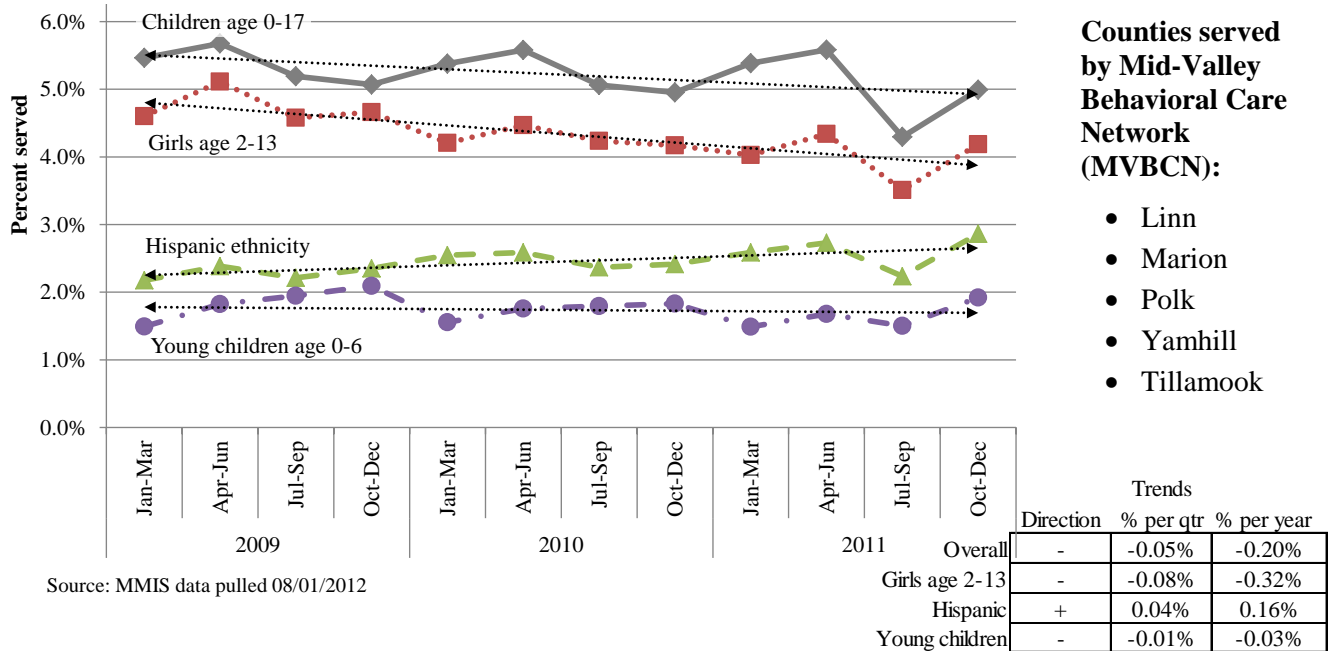


**Figure 1.4: Family Care Inc. – Quarterly utilization of mental health services, OHP enrolled/eligible children, 2009-2011**



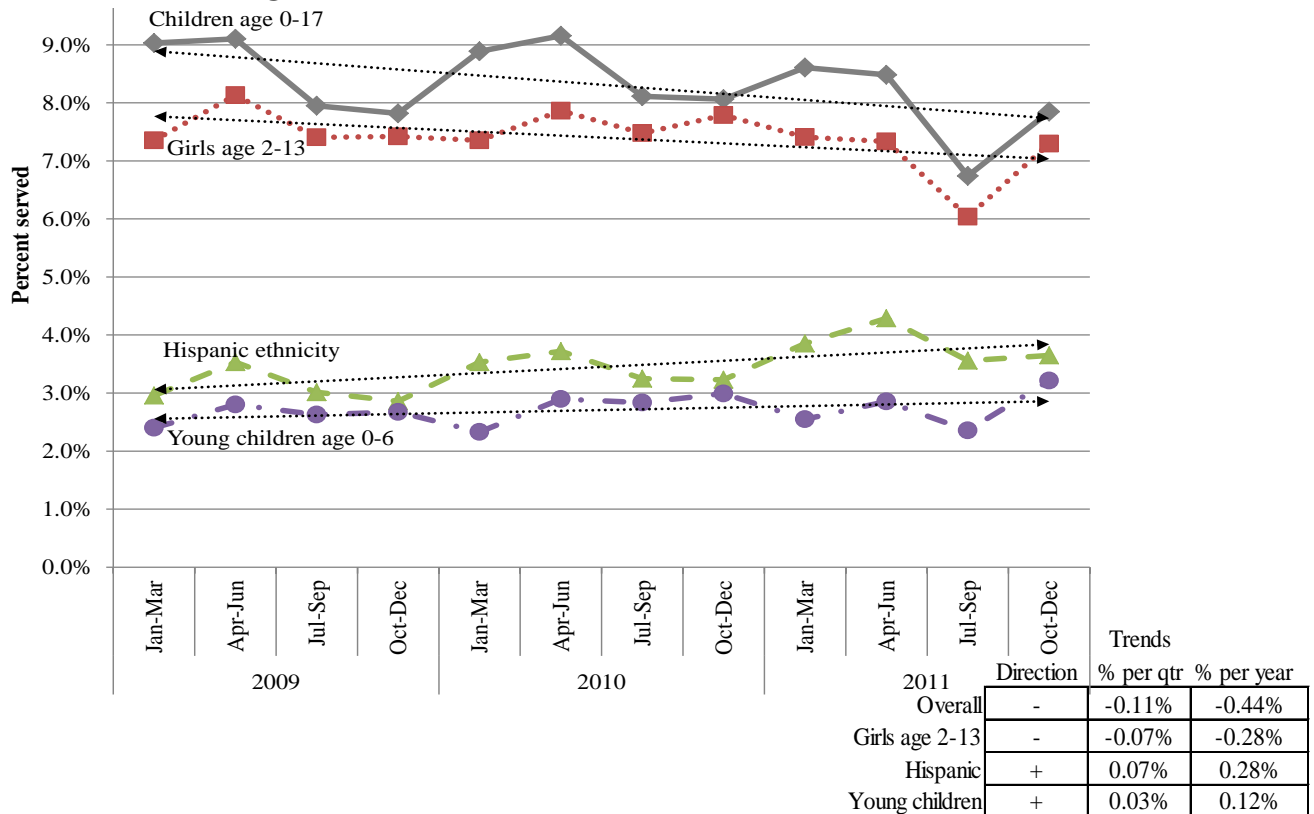
### MHO Charts: Utilization by child population – Willamette Valley & Coast Range

**Figure 1.5: Mid-Valley Behavioral Care Network – Quarterly utilization of mental health services, OHP enrolled/eligible children, 2009-2011**



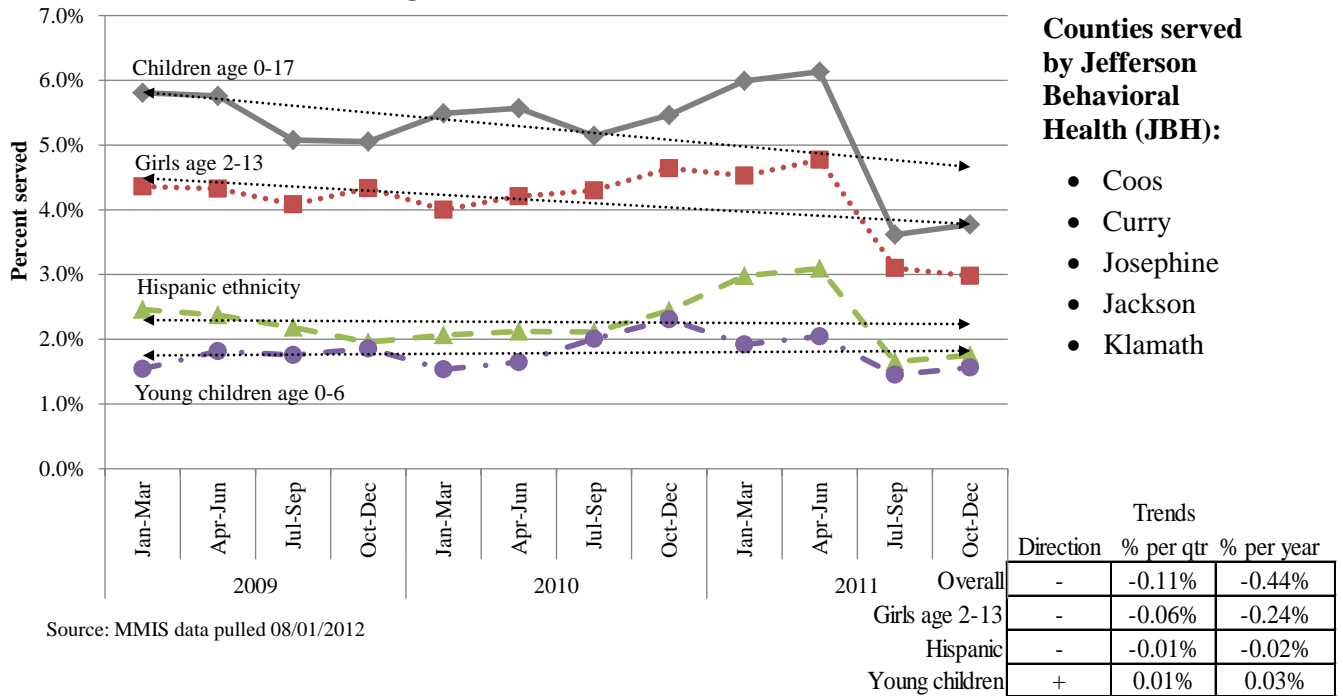
Source: MMIS data pulled 08/01/2012

**Figure 1.6: Lane Care MHO – Quarterly utilization of mental health services, OHP enrolled/eligible children, 2009-2011**



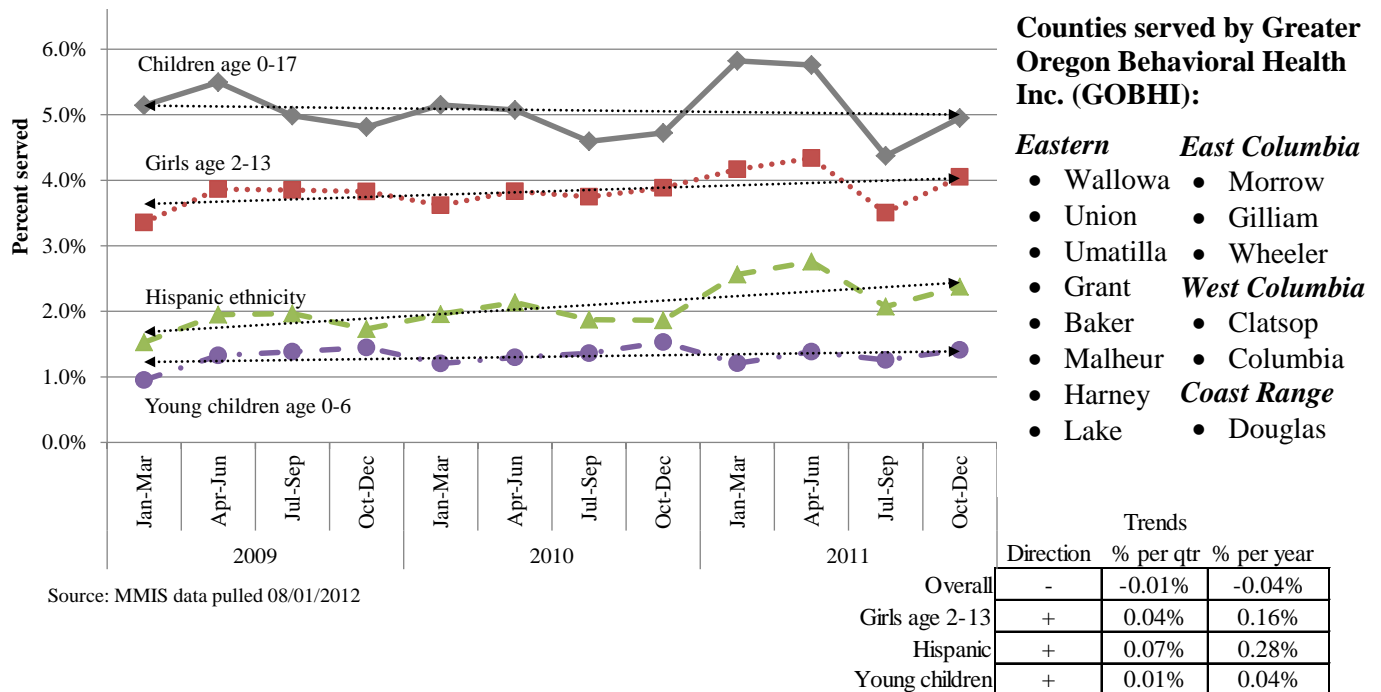
### MHO Charts: Utilization by child population – Southern Oregon

**Figure 1.7: Jefferson Behavioral Health – Quarterly utilization of mental health services, OHP enrolled/eligible children, 2009-2011**



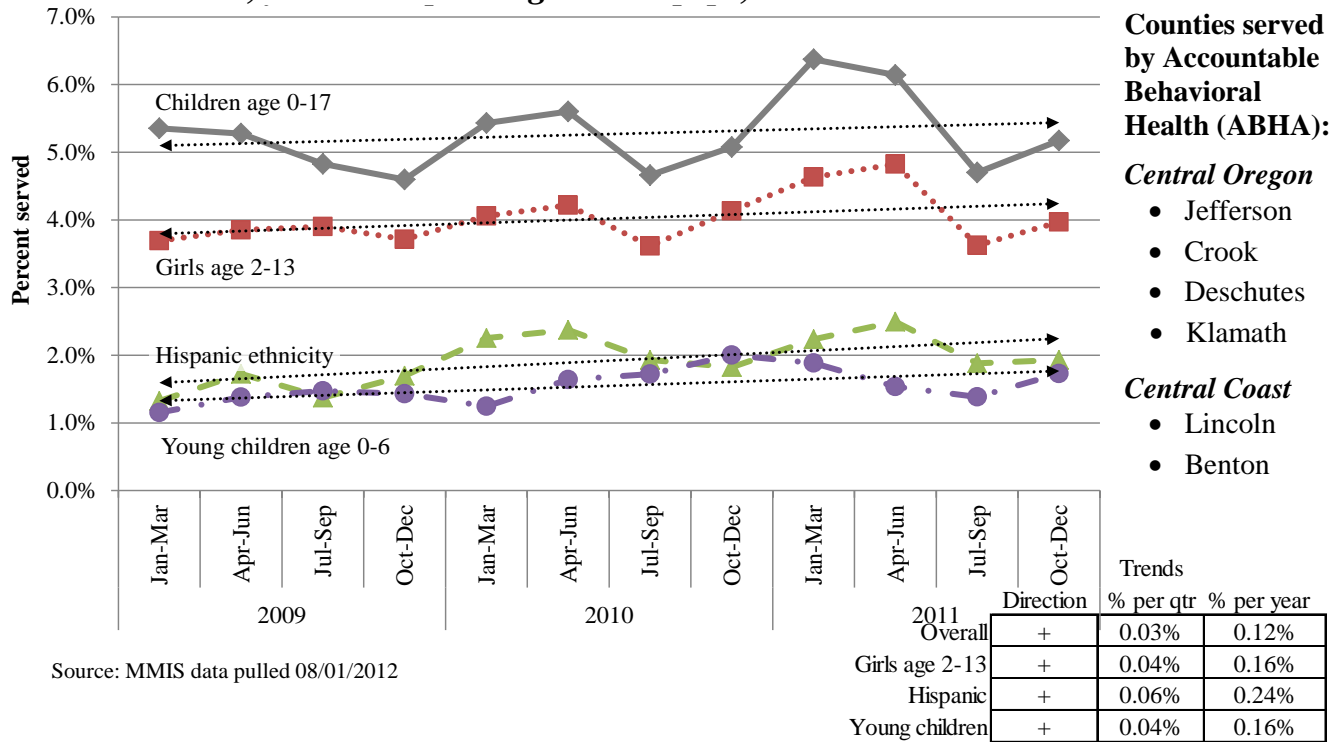
### MHO Charts: Utilization by child population – Eastern & Rural Oregon

**Figure 1.8: Greater Oregon Behavioral Health Inc. – Quarterly utilization of mental health services, OHP enrolled/eligible children, 2009-2011**

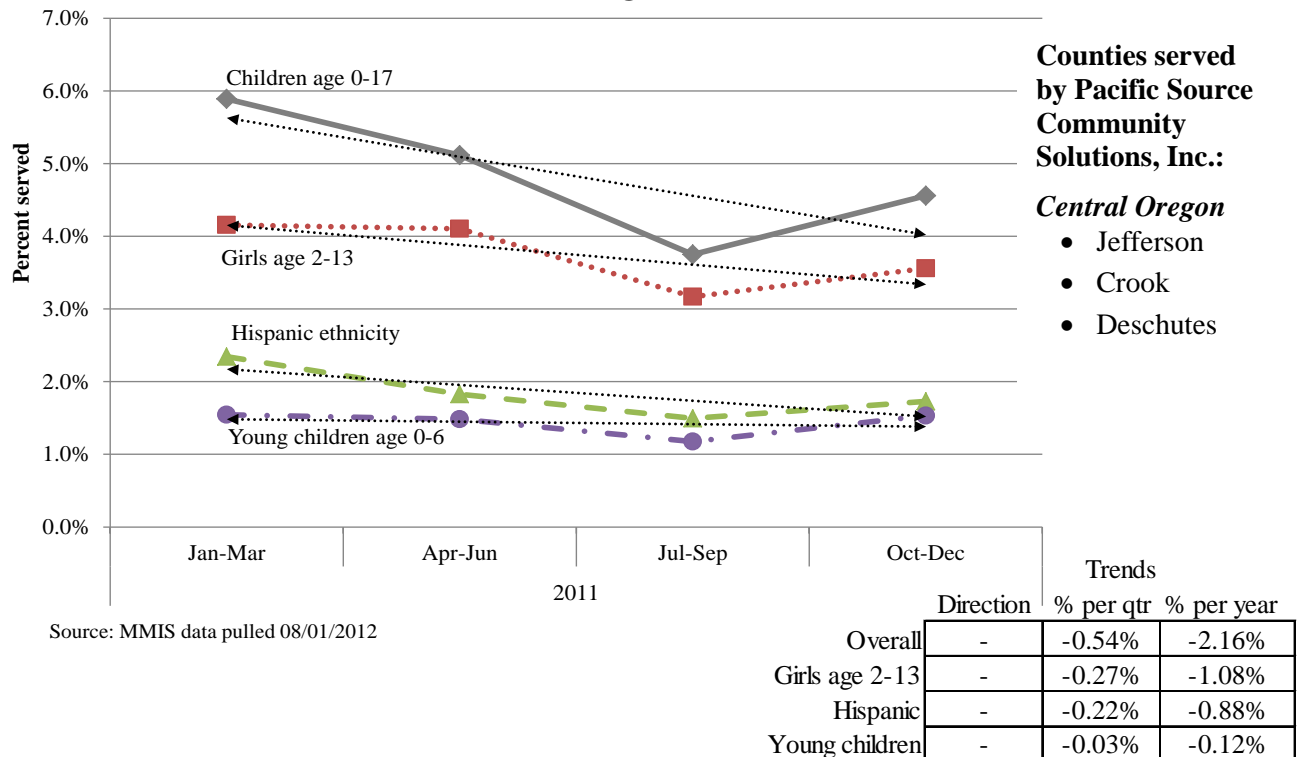


**MHO Charts: Utilization by child population – Central & Central Coast**

**Figure 1.9: Accountable Behavioral Health – Quarterly utilization of mental health services, OHP enrolled/eligible children, 2009-2011**

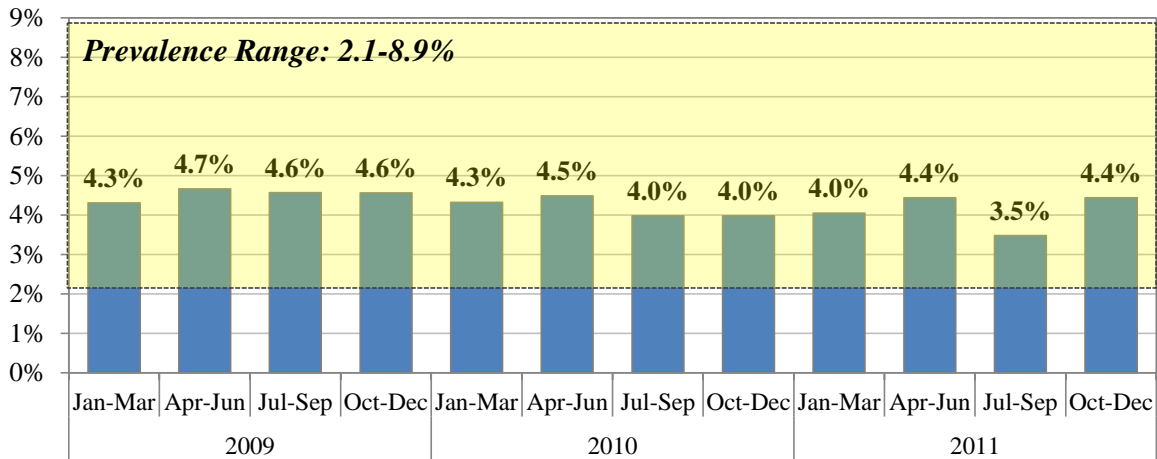


**Figure 1.10: Pacific Source Community Solutions Inc. – Quarterly utilization of mental health services, OHP enrolled/eligible children, 2009-2011**

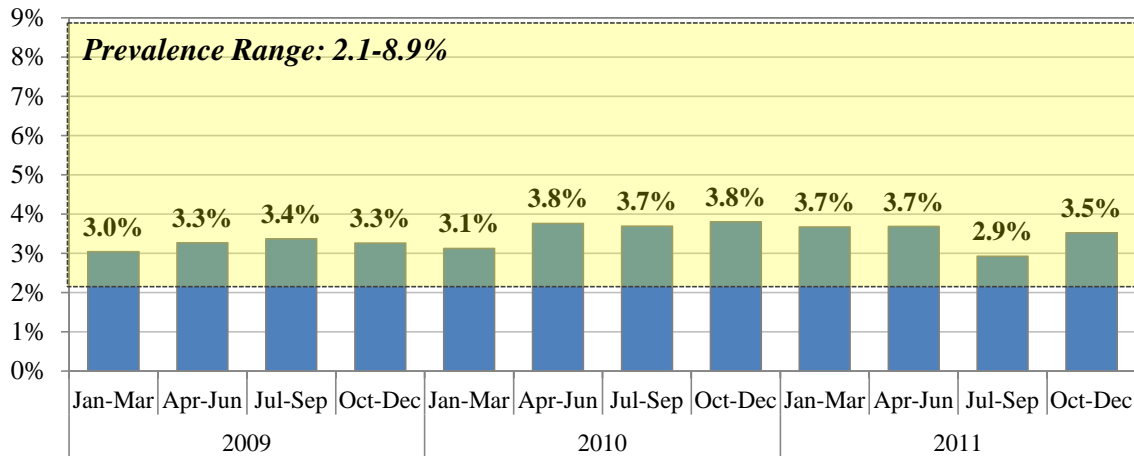


**MHO Charts: Girls age 2-13 – Portland Metropolitan Area & Mid-Columbia**

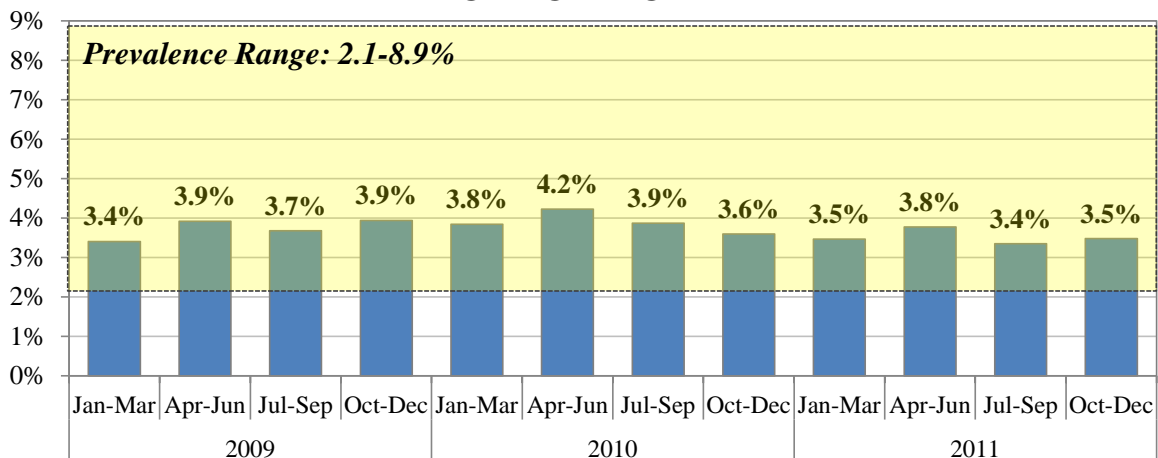
**Figure 3.1: Multnomah Verity MHO – Quarterly utilization of mental health services, OHP enrolled/eligible girls age 2-13, 2009-2011**



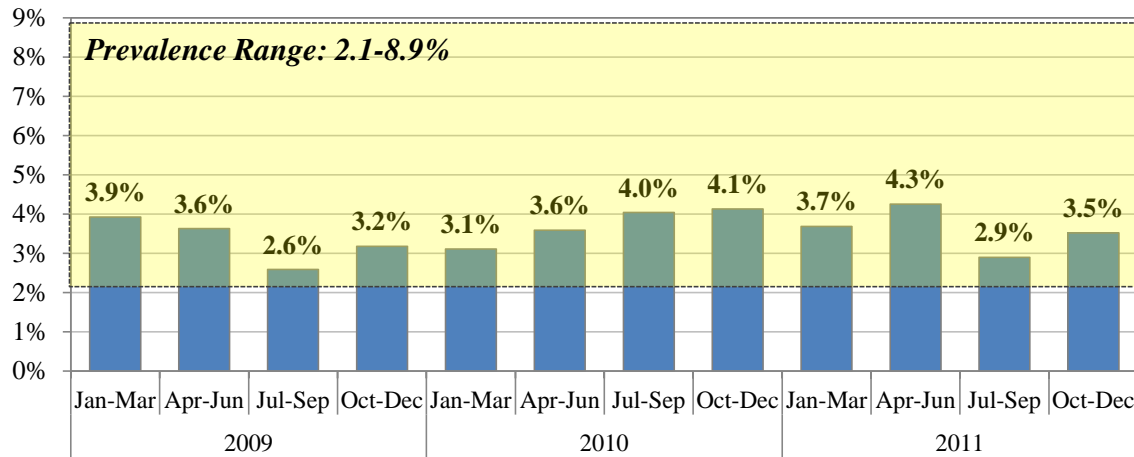
**Figure 3.2: Washington County Health Department – Quarterly utilization of mental health services, OHP enrolled/eligible girls age 2-13, 2009-2011**



**Figure 3.3: Clackamas County Mental Health – Quarterly utilization of mental health services, OHP enrolled/eligible girls age 2-13, 2009-2011**

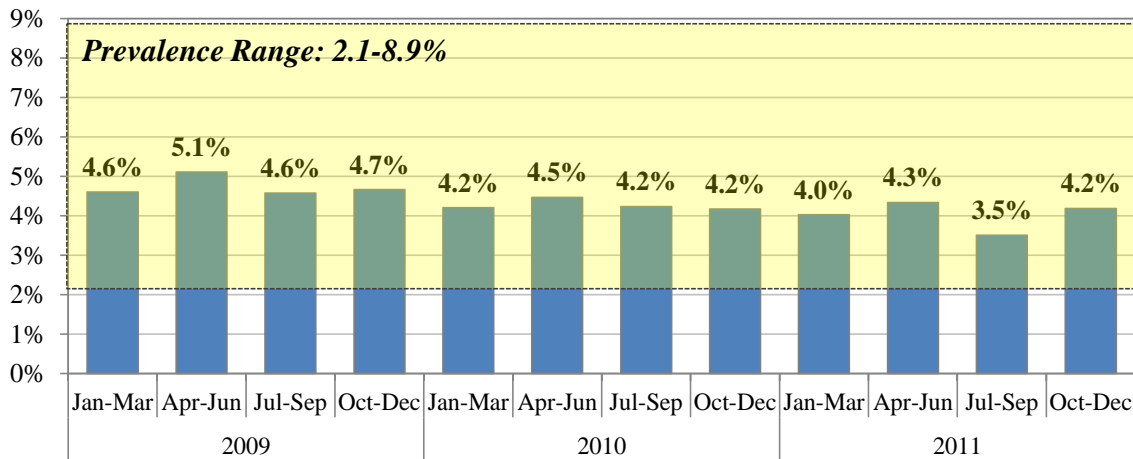


**Figure 3.4: Family Care Inc. – Quarterly utilization of mental health services, OHP enrolled/eligible girls age 2-13, 2009-2011**

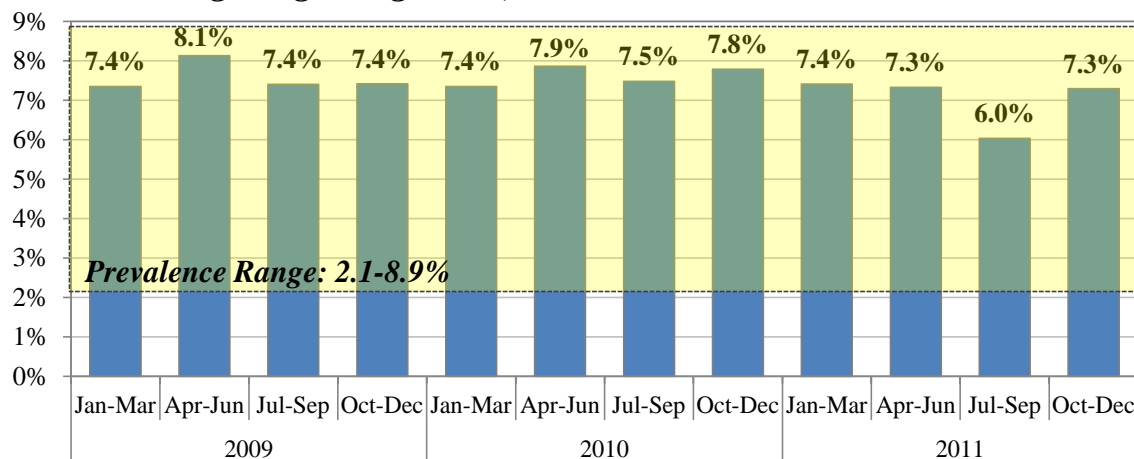


**MHO Charts: Girls age 2-13 – Willamette Valley & Coast Range**

**Figure 3.5: Mid-Valley Behavioral Care Network – Quarterly utilization of mental health services, OHP enrolled/eligible girls age 2-13, 2009-2011**



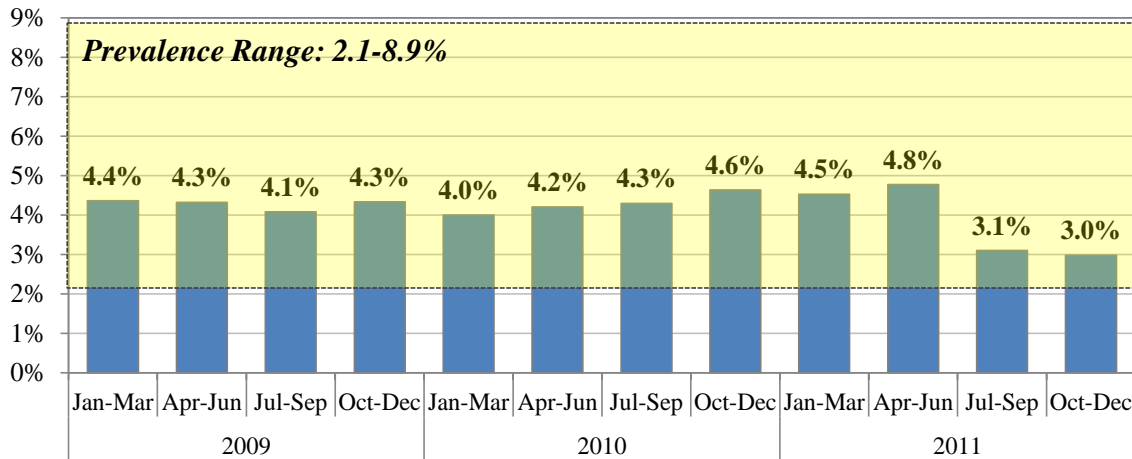
**Figure 3.6: Lane Care MHO – Quarterly utilization of mental health services, OHP enrolled/eligible girls age 2-13, 2009-2011**





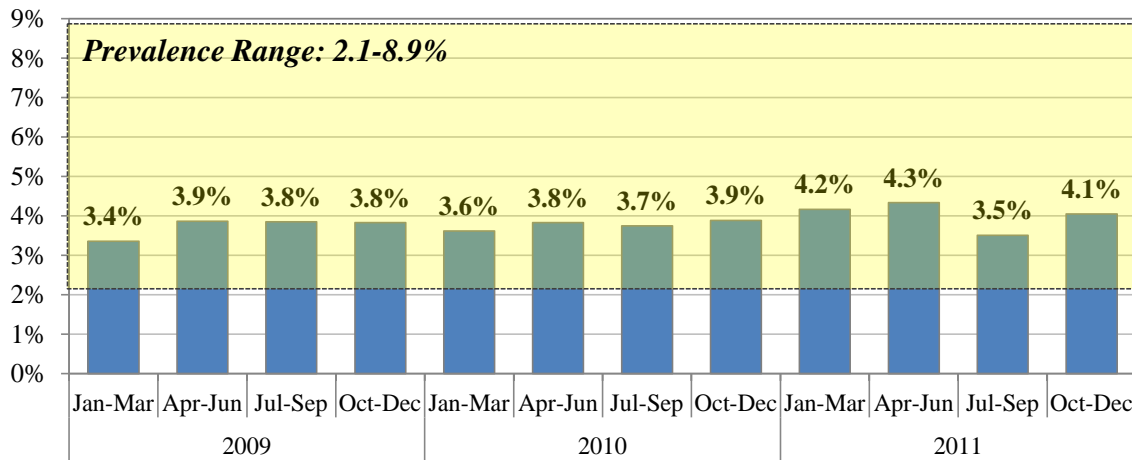
**MHO Charts: Girls age 2-13 – Southern Oregon**

**Figure 3.7: Jefferson Behavioral Health – Quarterly utilization of mental health services, OHP enrolled/eligible girls age 2-13, 2009-2011**



**MHO Charts: Girls age 2-13 – Eastern & Rural Oregon**

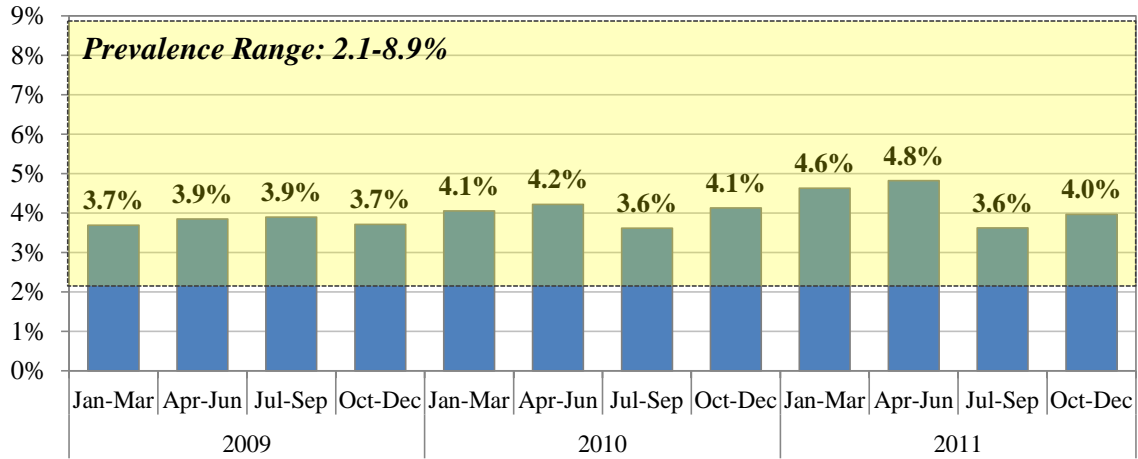
**Figure 3.8: Greater Oregon Behavioral Health Inc. – Quarterly utilization of mental health services, OHP enrolled/eligible girls age 2-13, 2009-2011**



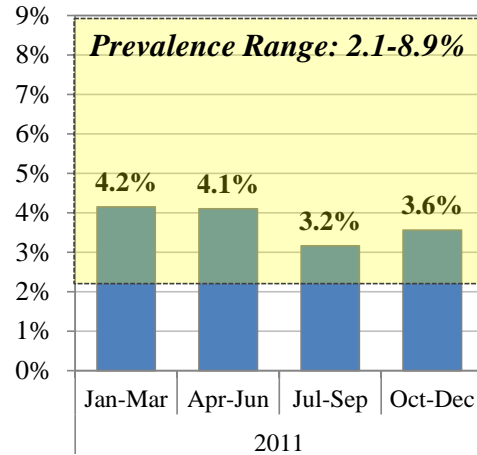
(Continued on next page)

**MHO Charts: Girls age 2-13 – Central Oregon & Central Coast**

**Figure 3.9: Accountable Behavioral Health – Quarterly utilization of mental health services, OHP enrolled/eligible girls age 2-13, 2009-2011**

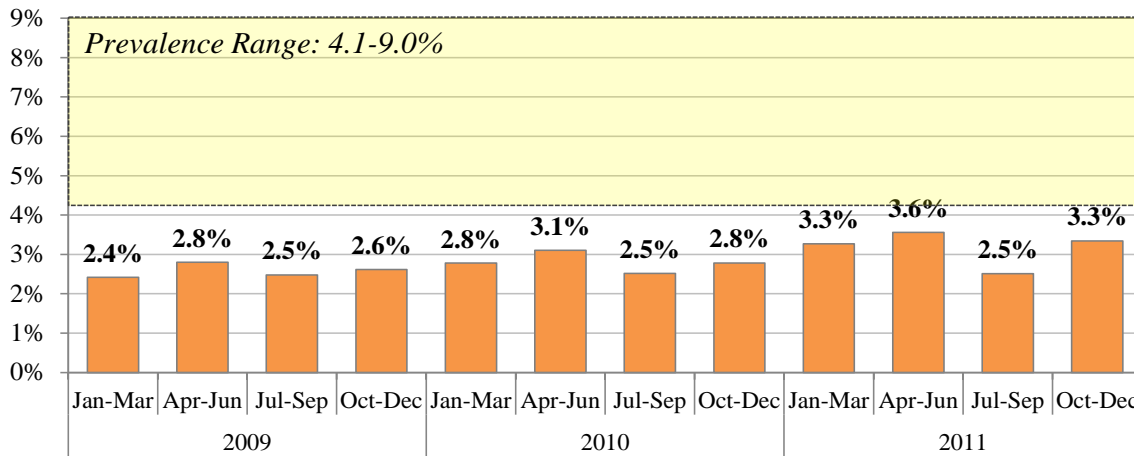


**Figure 3.10: Pacific Source Community Solutions Inc. – quarterly utilization of mental health services, OHP enrolled/eligible girls age 2-13, 2009-2011**

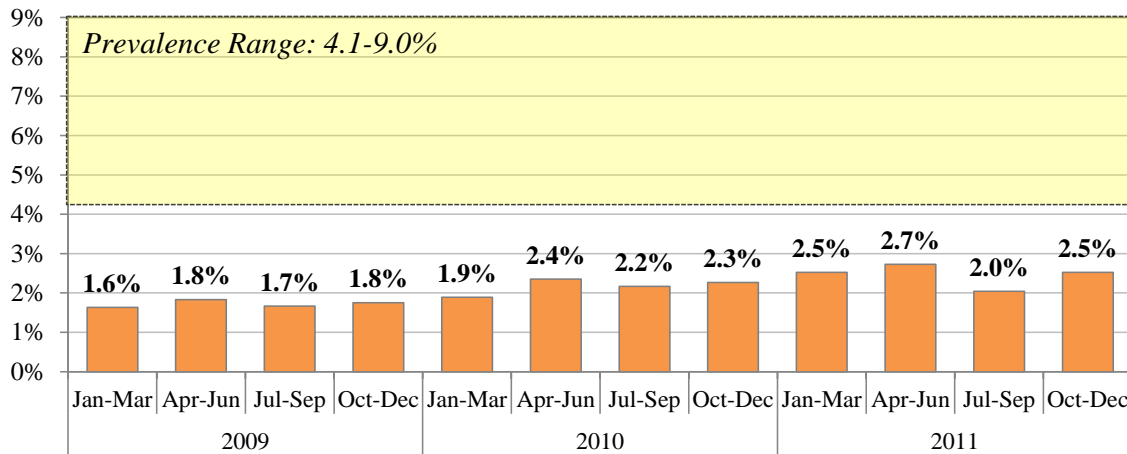


**MHO Charts: Hispanic Ethnicity – Portland Metropolitan & Mid-Columbia**

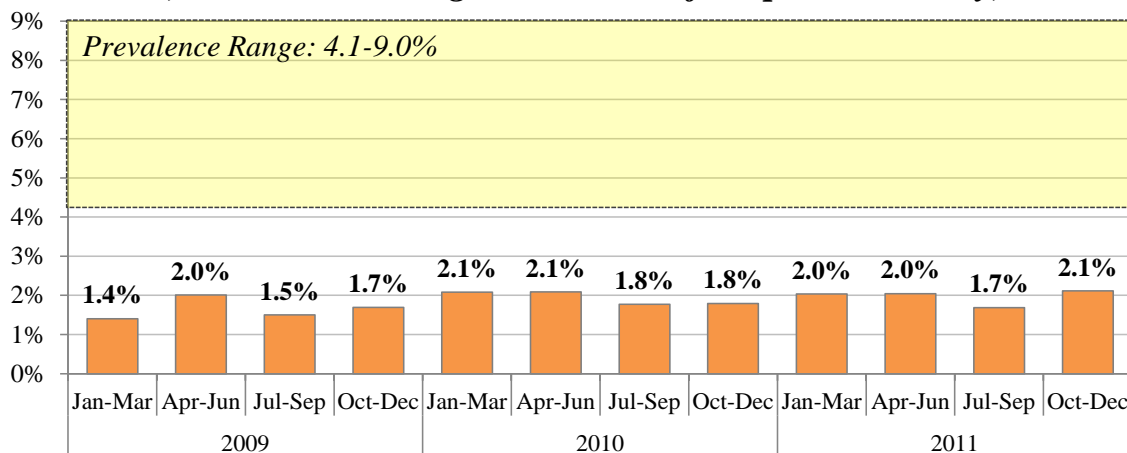
**Figure 5.1: Multnomah Verity MHO – Quarterly utilization of mental health services, OHP enrolled/eligible children of Hispanic ethnicity, 2009-2011**



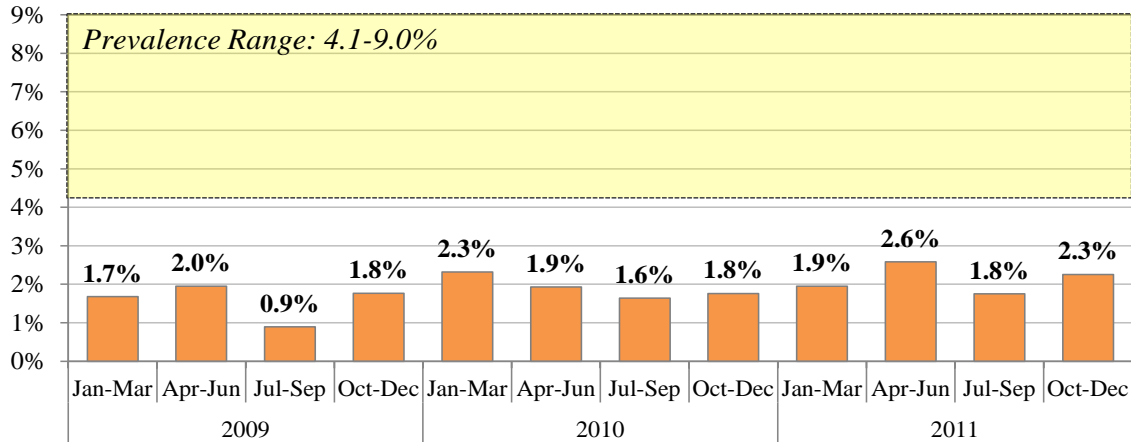
**Figure 5.2: Washington County Health Dept. – Quarterly utilization of mental health services, OHP enrolled/eligible children of Hispanic ethnicity, 2009-2011**



**Figure 5.3: Clackamas County Mental Health – Quarterly utilization of mental health services, OHP enrolled/eligible children of Hispanic ethnicity, 2009-2011**

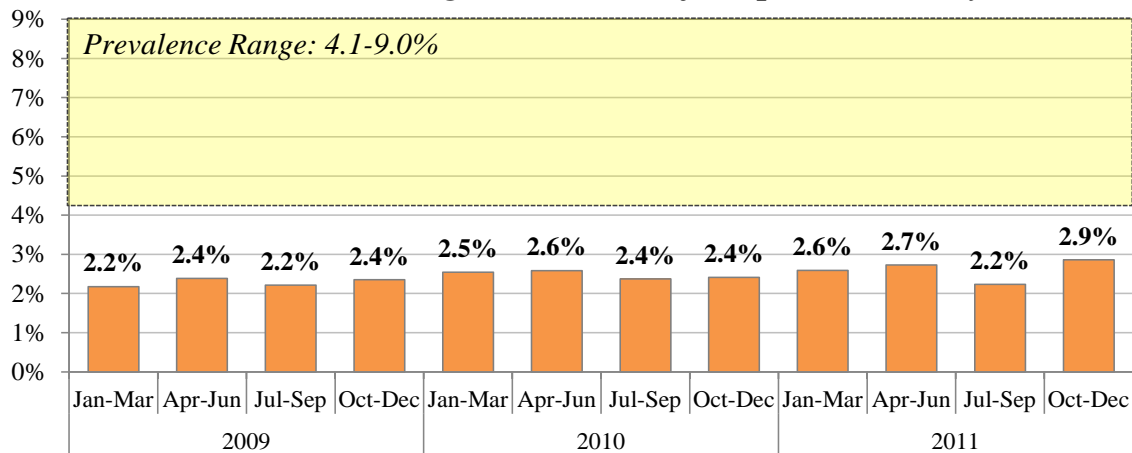


**Figure 5.4: Family Care MHO – Quarterly utilization of mental health services, OHP enrolled/eligible children of Hispanic ethnicity, 2009-2011**

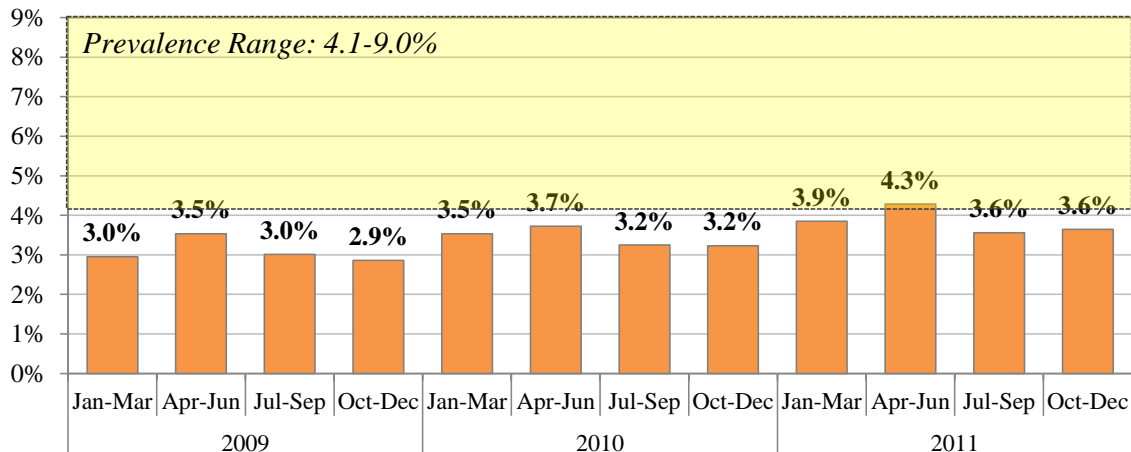


**MHO Charts: Hispanic Ethnicity – Willamette Valley & Coast Range**

**Figure 5.5: Mid-Valley Behavioral Care Network – Quarterly utilization of mental health services, OHP enrolled/eligible children of Hispanic ethnicity, 2009-2011**

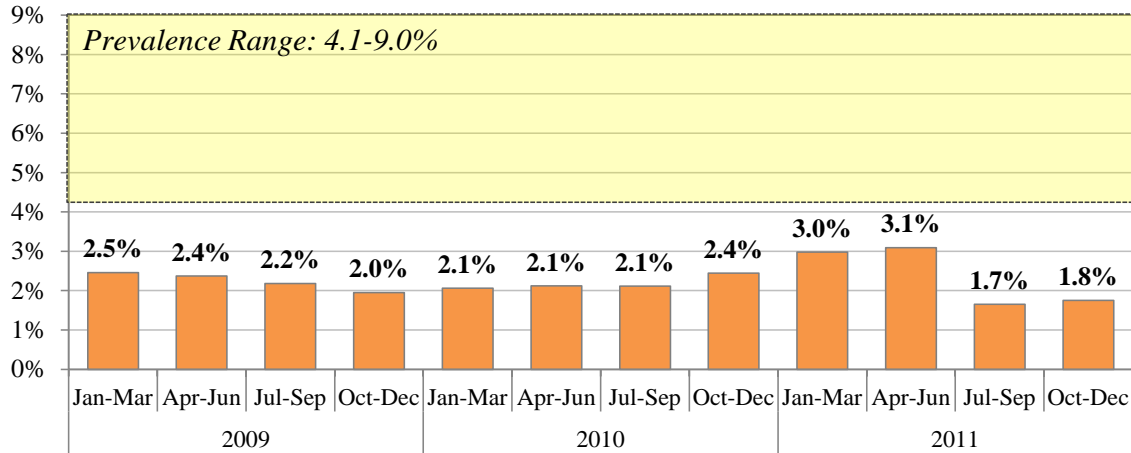


**Figure 5.6: Lane Care MHO – Quarterly utilization of mental health services, OHP enrolled/eligible children of Hispanic ethnicity, 2009-2011**



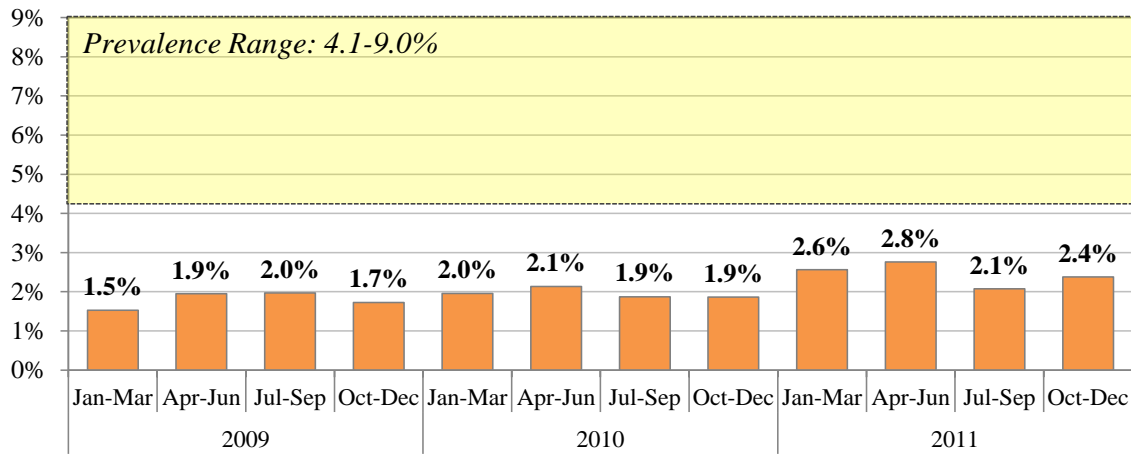
**MHO Charts: Hispanic Ethnicity – Southern Oregon**

**Figure 5.7: Jefferson Behavioral Health – Quarterly utilization of mental health services, OHP enrolled/eligible children of Hispanic ethnicity, 2009-2011**



**MHO Charts: Hispanic Ethnicity – Eastern & Rural Oregon**

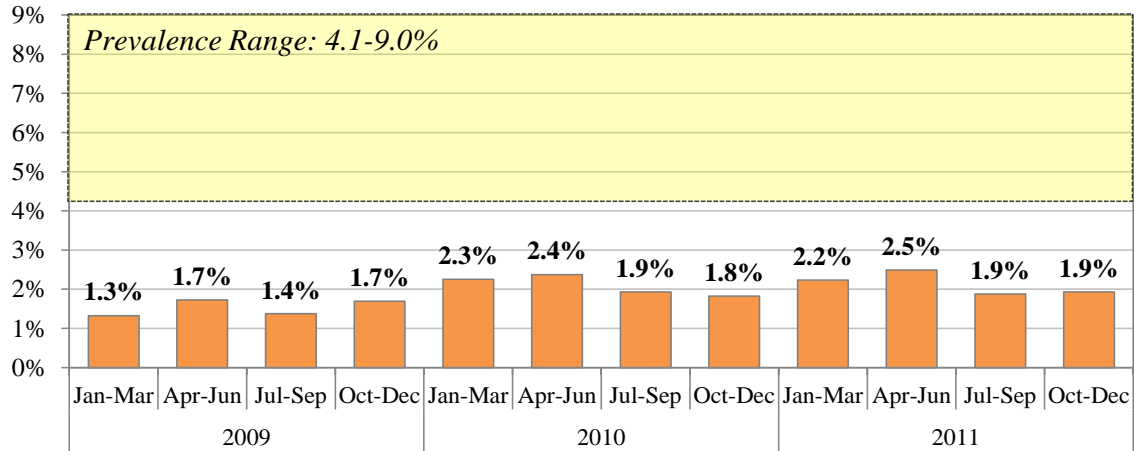
**Figure 5.8: Greater Oregon Behavioral Health – Quarterly utilization of mental health services, OHP enrolled/eligible children of Hispanic ethnicity, 2009-2011**



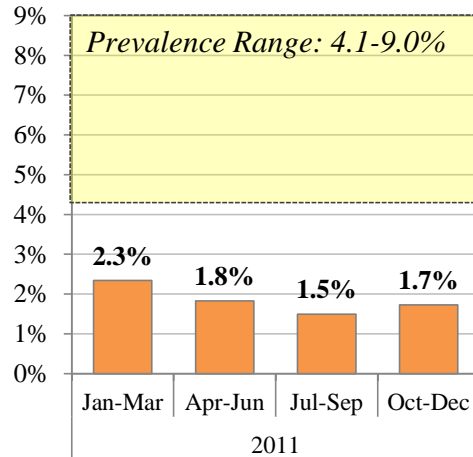
(Continued on next page)

**MHO Charts: Hispanic Ethnicity – Central Oregon & Central Coast**

**Figure 5.9: Accountable Behavioral Health – Quarterly utilization of mental health services, OHP enrolled/eligible children of Hispanic ethnicity, 2009-2011**

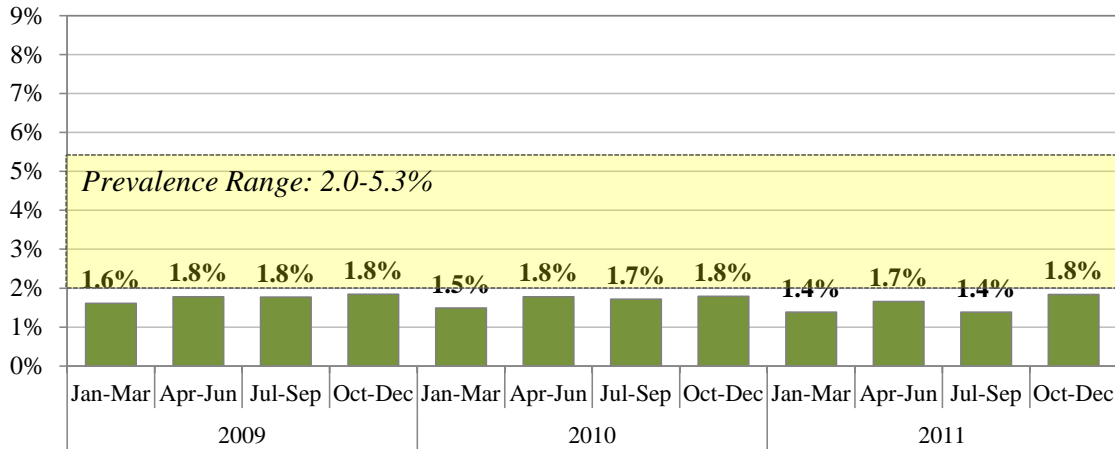


**Figure 5.10: Pacific Source Community Solutions – Quarterly utilization of mental health services, OHP enrolled/eligible children of Hispanic ethnicity, 2009-2011**

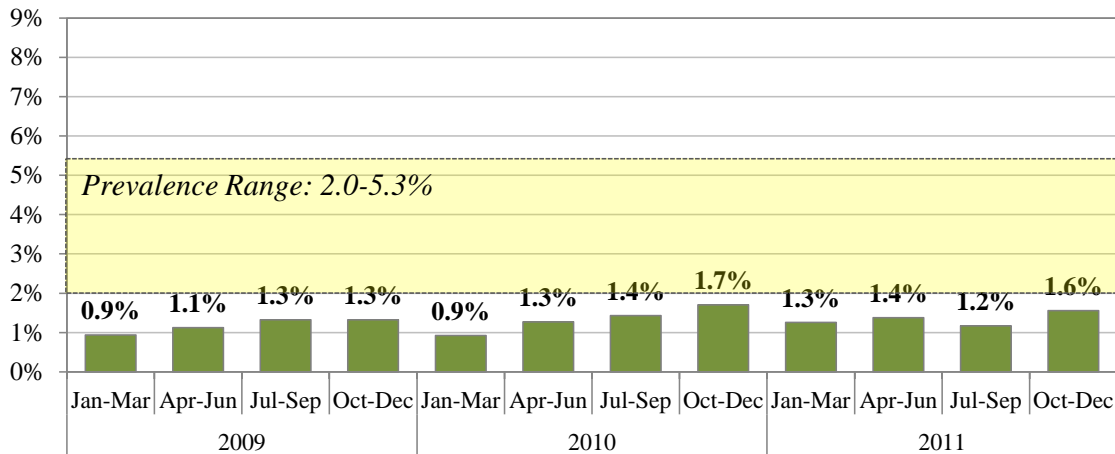


**MHO Charts: Young children age 0-6 – Portland Metro Area & Mid-Columbia**

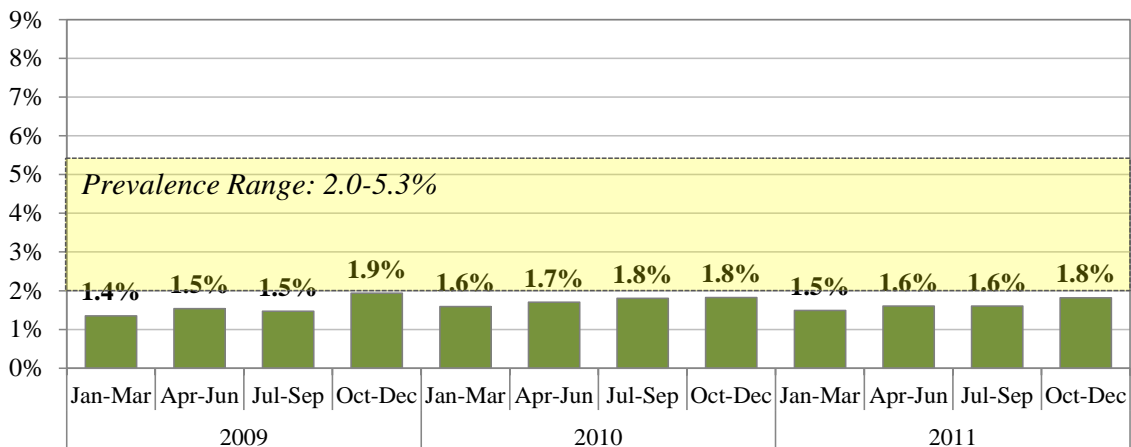
**Figure 7.1: Multnomah Verity MHO – Quarterly utilization of mental health services, OHP enrolled/eligible children age 0-6, 2009-2011**



**Figure 7.2: Washington County Health Department – Quarterly utilization of mental health services, OHP enrolled/eligible children age 0-6, 2009-2011**

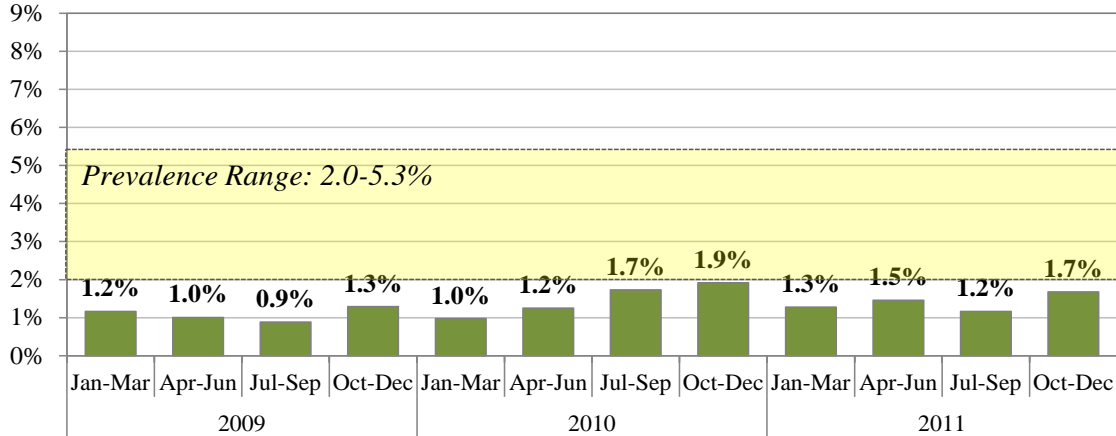


**Figure 7.3: Clackamas County Mental Health – Quarterly utilization of mental health services, OHP enrolled/eligible children age 0-6, 2009-2011**



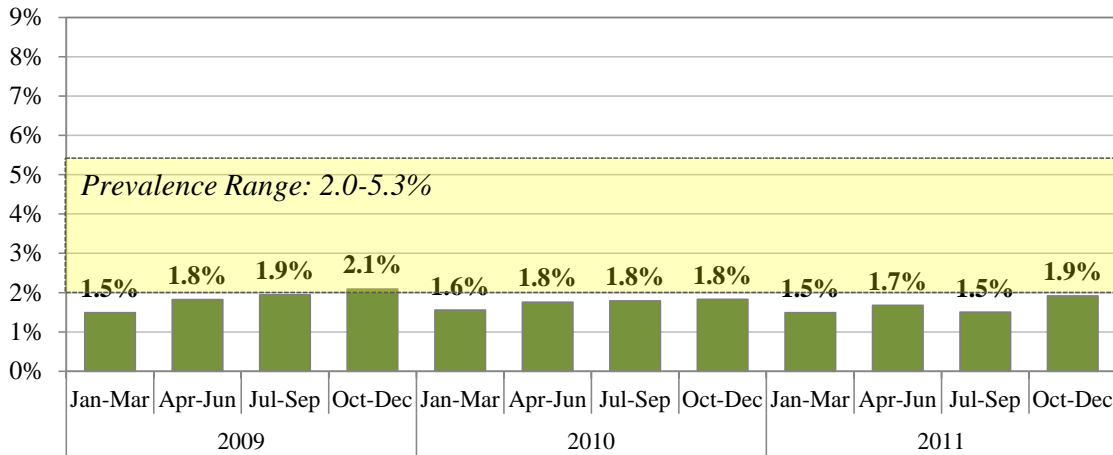


**Figure 7.4: Family Care Inc. – Quarterly utilization of mental health services, OHP enrolled/eligible children age 0-6, 2009-2011**

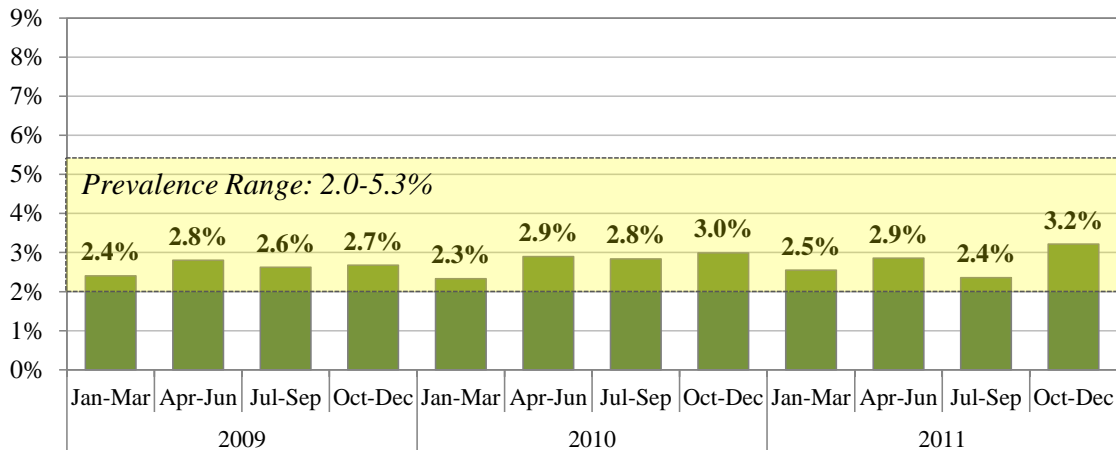


**MHO Charts: Young children age 0-6 – Willamette Valley & Coast Range**

**Figure 7.5: Mid-Valley Behavioral Care Network – Quarterly utilization of mental health services, OHP enrolled/eligible children age 0-6, 2009-2011**

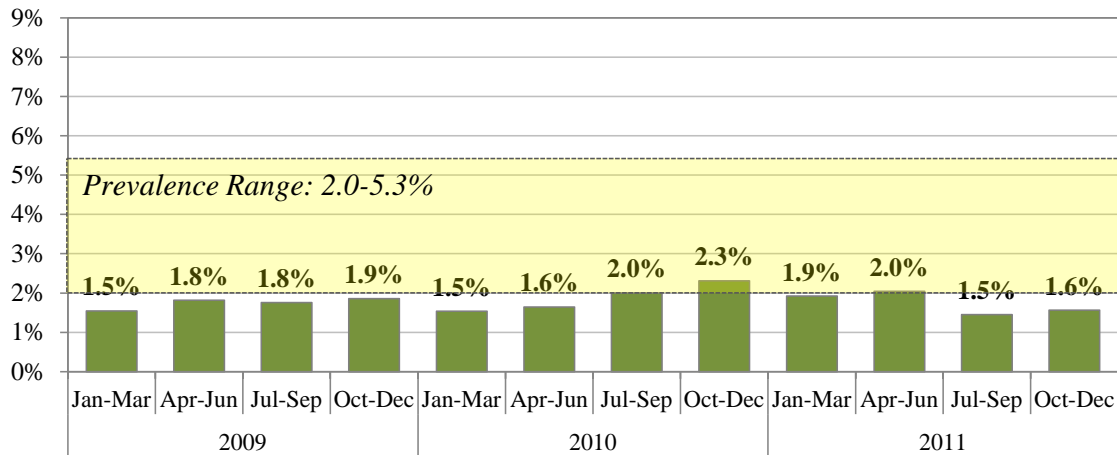


**Figure 7.6: Lane Care MHO – Quarterly utilization of mental health services, OHP enrolled/eligible children age 0-6, 2009-2011**



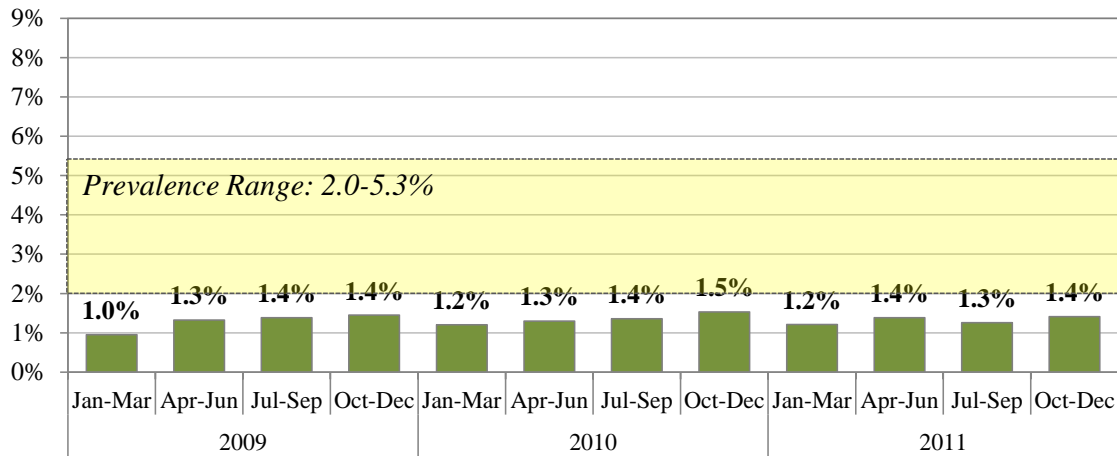
**MHO Charts: Young children age 0-6 – Southern Oregon**

**Figure 7.7: Jefferson Behavioral Health – Quarterly utilization of mental health services, OHP enrolled/eligible children age 0-6, 2009-2011**



**MHO Charts: Young children age 0-6 – Eastern & Rural Oregon**

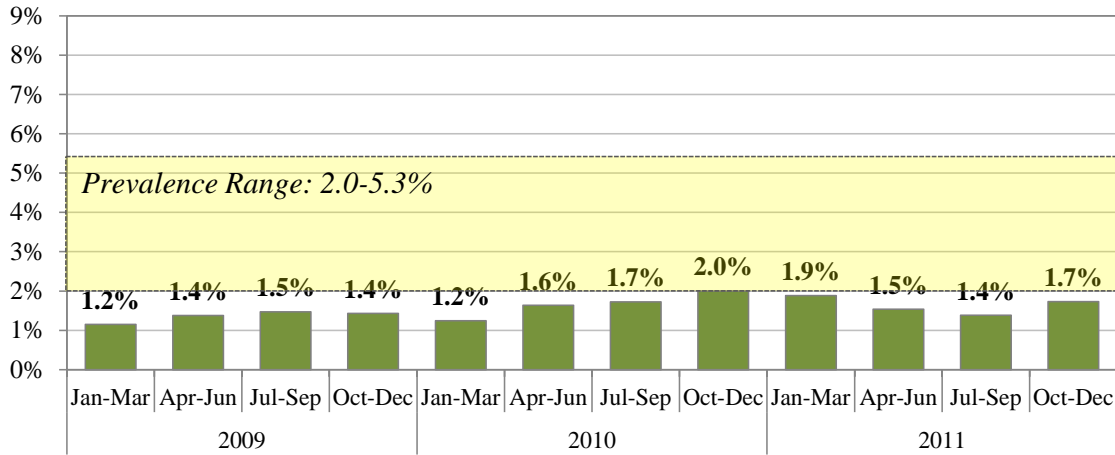
**Figure 7.8: Greater Oregon Behavioral Health Inc. – Quarterly utilization of mental health services, OHP enrolled/eligible children age 0-6, 2009-2011**



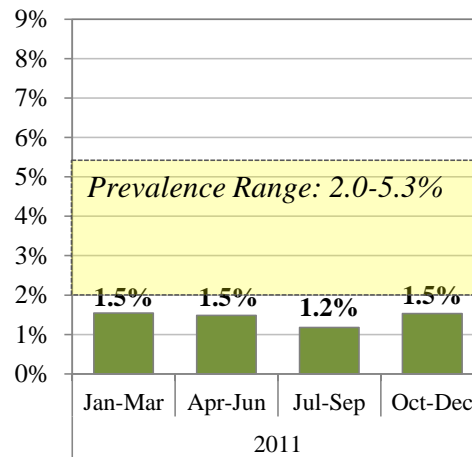
(Continued on next page)

**MHO Charts: Young children age 0-6 – Central Oregon & Central Coast**

**Figure 7.9: Accountable Behavioral Health – Quarterly utilization of mental health services, OHP enrolled/eligible children age 0-6, 2009-2011**



**Figure 7.10: Pacific Source Community Solutions Inc. – Quarterly utilization of mental health services, OHP enrolled/eligible children age 0-6, 2009-2011**



**Table 5: Quarterly utilization of mental health services by Medicaid eligible/enrolled children, 2009-2011**

STATEWIDE													
		Children age 0-17 years			Girls age 2-13			Hispanic/ Latino ethnicity			Young children age 0-6		
Year	Quarter	Eligible/ Enrolled	Number Served	Percent Served	Eligible/ Enrolled	Number Served	Percent Served	Eligible/ Enrolled	Number Served	Percent Served	Eligible/ Enrolled	Number Served	Percent Served
2009	Jan-Mar	263,323	13,665	5.2%	87,777	3,417	3.9%	85,100	1,507	1.8%	132,702	1,775	1.3%
	Apr-Jun	273,058	14,621	5.4%	90,263	3,843	4.3%	87,875	1,799	2.0%	135,998	2,147	1.6%
	Jul-Sep	284,204	13,807	4.9%	93,529	3,801	4.1%	90,327	1,669	1.8%	138,747	2,263	1.6%
	Oct-Dec	301,766	15,209	5.0%	98,856	4,236	4.3%	94,943	1,865	2.0%	144,797	2,612	1.8%
2010	Jan-Mar	304,425	17,109	5.6%	103,648	4,291	4.1%	96,033	2,132	2.2%	149,936	2,170	1.4%
	Apr-Jun	316,309	18,086	5.7%	106,868	4,659	4.4%	98,700	2,345	2.4%	153,272	2,569	1.7%
	Jul-Sep	329,946	16,703	5.1%	110,514	4,561	4.1%	101,148	2,124	2.1%	156,392	2,756	1.8%
	Oct-Dec	342,174	17,687	5.2%	113,779	4,834	4.2%	104,392	2,285	2.2%	159,316	3,032	1.9%
2011	Jan-Mar	338,458	19,384	5.7%	116,682	4,843	4.2%	103,469	2,615	2.5%	161,287	2,444	1.5%
	Apr-Jun	350,388	20,163	5.8%	119,654	5,275	4.4%	106,018	2,884	2.7%	164,751	2,766	1.7%
	Jul-Sep	361,315	17,490	4.8%	122,067	4,800	3.9%	107,989	2,496	2.3%	166,692	2,767	1.7%
	Oct-Dec	369,532	18,178	4.9%	123,490	4,966	4.0%	110,082	2,733	2.5%	167,919	3,017	1.8%
Portland Metro Area & Mid-Columbia													
Multnomah Verity MHO													
		Children age 0-17 years			Girls age 2-13			Hispanic/ Latino ethnicity			Young children age 0-6		
Year	Quarter	Eligible/ Enrolled	Number Served	Percent Served	Eligible/ Enrolled	Number Served	Percent Served	Eligible/ Enrolled	Number Served	Percent Served	Eligible/ Enrolled	Number Served	Percent Served
2009	Jan-Mar	42,000	2,493	5.9%	13,999	603	4.3%	13,203	319	2.4%	21,778	350	1.6%
	Apr-Jun	43,090	2,589	6.0%	14,258	665	4.7%	13,472	377	2.8%	22,012	391	1.8%
	Jul-Sep	44,595	2,427	5.4%	14,714	672	4.6%	13,794	342	2.5%	22,373	396	1.8%
	Oct-Dec	46,796	2,529	5.4%	15,426	704	4.6%	14,274	373	2.6%	23,025	424	1.8%
2010	Jan-Mar	47,363	2,768	5.8%	16,241	702	4.3%	14,429	401	2.8%	23,994	357	1.5%
	Apr-Jun	48,439	2,912	6.0%	16,582	744	4.5%	14,538	451	3.1%	24,050	427	1.8%
	Jul-Sep	47,269	2,386	5.0%	16,044	639	4.0%	14,358	361	2.5%	22,749	391	1.7%
	Oct-Dec	48,043	2,492	5.2%	16,201	645	4.0%	14,733	410	2.8%	22,628	405	1.8%
2011	Jan-Mar	47,199	2,776	5.9%	16,550	670	4.0%	14,579	477	3.3%	22,815	315	1.4%
	Apr-Jun	49,153	2,851	5.8%	17,047	757	4.4%	15,102	538	3.6%	23,385	387	1.7%
	Jul-Sep	57,995	2,478	4.3%	19,865	691	3.5%	17,573	441	2.5%	27,671	383	1.4%
	Oct-Dec	51,781	2,752	5.3%	17,537	779	4.4%	15,681	524	3.3%	23,883	439	1.8%

Table 5, continued: Quarterly utilization of mental health services by Medicaid eligible/enrolled children, 2009-11

Washington County Department of Health													
		Children age 0-17 years			Girls age 2-13			Hispanic/ Latino ethnicity			Young children age 0-6		
Year	Quarter	Eligible/ Enrolled	Number Served	Percent Served	Eligible/ Enrolled	Number Served	Percent Served	Eligible/ Enrolled	Number Served	Percent Served	Eligible/ Enrolled	Number Served	Percent Served
2009	Jan-Mar	24,146	1,081	4.5%	8,158	248	3.0%	12,552	205	1.6%	13,437	126	0.9%
	Apr-Jun	25,030	1,146	4.6%	8,407	275	3.3%	13,062	239	1.8%	13,661	154	1.1%
	Jul-Sep	26,723	1,187	4.4%	8,963	302	3.4%	13,742	229	1.7%	14,317	190	1.3%
	Oct-Dec	28,345	1,205	4.3%	9,507	310	3.3%	14,367	252	1.8%	14,797	196	1.3%
2010	Jan-Mar	29,814	1,360	4.6%	10,337	323	3.1%	14,905	282	1.9%	15,855	147	0.9%
	Apr-Jun	30,530	1,521	5.0%	10,573	398	3.8%	15,290	360	2.4%	15,807	201	1.3%
	Jul-Sep	29,611	1,390	4.7%	10,206	377	3.7%	14,481	314	2.2%	14,676	210	1.4%
	Oct-Dec	30,039	1,465	4.9%	10,224	389	3.8%	14,589	331	2.3%	14,496	247	1.7%
2011	Jan-Mar	29,802	1,590	5.3%	10,448	384	3.7%	14,559	367	2.5%	14,661	184	1.3%
	Apr-Jun	30,838	1,668	5.4%	10,802	398	3.7%	14,971	408	2.7%	14,872	205	1.4%
	Jul-Sep	36,212	1,507	4.2%	12,522	366	2.9%	17,388	355	2.0%	17,430	204	1.2%
	Oct-Dec	32,927	1,533	4.7%	11,332	399	3.5%	15,683	396	2.5%	15,273	238	1.6%
Clackamas Mental Health Organization													
		Children age 0-17 years			Girls age 2-13			Hispanic/ Latino ethnicity			Young children age 0-6		
Year	Quarter	Eligible/ Enrolled	Number Served	Percent Served	Eligible/ Enrolled	Number Served	Percent Served	Eligible/ Enrolled	Number Served	Percent Served	Eligible/ Enrolled	Number Served	Percent Served
2009	Jan-Mar	17,019	827	4.9%	5,697	194	3.4%	5,549	78	1.4%	8,569	116	1.4%
	Apr-Jun	17,583	911	5.2%	5,817	228	3.9%	5,676	114	2.0%	8,724	134	1.5%
	Jul-Sep	18,106	796	4.4%	5,956	219	3.7%	5,848	88	1.5%	8,783	129	1.5%
	Oct-Dec	19,168	931	4.9%	6,269	247	3.9%	6,092	103	1.7%	9,077	176	1.9%
2010	Jan-Mar	20,359	1,100	5.4%	6,891	265	3.8%	6,292	131	2.1%	9,953	158	1.6%
	Apr-Jun	20,376	1,187	5.8%	6,884	291	4.2%	6,273	131	2.1%	9,744	166	1.7%
	Jul-Sep	18,945	962	5.1%	6,358	246	3.9%	5,924	105	1.8%	8,702	157	1.8%
	Oct-Dec	19,130	957	5.0%	6,341	228	3.6%	6,021	108	1.8%	8,503	155	1.8%
2011	Jan-Mar	18,966	1,039	5.5%	6,486	225	3.5%	6,038	123	2.0%	8,659	129	1.5%
	Apr-Jun	19,580	1,067	5.4%	6,648	251	3.8%	6,217	127	2.0%	8,777	141	1.6%
	Jul-Sep	23,316	1,017	4.4%	7,789	261	3.4%	7,340	124	1.7%	10,455	168	1.6%
	Oct-Dec	21,270	1,019	4.8%	6,957	242	3.5%	6,532	138	2.1%	9,183	167	1.8%

Table 5, continued: Quarterly utilization of mental health services by Medicaid eligible/enrolled children, 2009-11

Family Care Inc.													
		Children age 0-17 years			Girls age 2-13			Hispanic/ Latino ethnicity			Young children age 0-6		
Year	Quarter	Eligible/Enrolled	Number Served	Percent Served	Eligible/Enrolled	Number Served	Percent Served	Eligible/Enrolled	Number Served	Percent Served	Eligible/Enrolled	Number Served	Percent Served
2009	Jan-Mar	7,100	344	4.8%	2,218	87	3.9%	1,844	31	1.7%	3,874	45	1.2%
	Apr-Jun	8,238	368	4.5%	2,588	94	3.6%	2,202	43	2.0%	4,476	45	1.0%
	Jul-Sep	9,818	265	2.7%	3,014	78	2.6%	2,683	24	0.9%	5,411	48	0.9%
	Oct-Dec	11,230	399	3.6%	3,399	108	3.2%	3,000	53	1.8%	6,132	79	1.3%
2010	Jan-Mar	12,219	509	4.2%	3,829	119	3.1%	3,278	76	2.3%	6,877	67	1.0%
	Apr-Jun	15,002	651	4.3%	4,705	169	3.6%	4,043	78	1.9%	8,336	104	1.2%
	Jul-Sep	23,713	1,055	4.4%	7,697	311	4.0%	6,343	104	1.6%	13,019	225	1.7%
	Oct-Dec	25,471	1,110	4.4%	8,334	344	4.1%	6,758	119	1.8%	13,681	262	1.9%
2011	Jan-Mar	26,870	1,247	4.6%	9,056	334	3.7%	7,087	138	1.9%	14,591	186	1.3%
	Apr-Jun	26,936	1,356	5.0%	9,104	387	4.3%	7,043	182	2.6%	14,373	209	1.5%
	Jul-Sep	30,682	1,015	3.3%	10,271	298	2.9%	7,921	139	1.8%	16,392	191	1.2%
	Oct-Dec	27,346	1,103	4.0%	9,170	323	3.5%	7,047	159	2.3%	14,084	236	1.7%
Willamette Valley & Coast Range													
Mid Valley Behavioral Care Network (MVBCN)													
		Children age 0-17 years			Girls age 2-13			Hispanic/ Latino ethnicity			Young children age 0-6		
Year	Quarter	Eligible/Enrolled	Number Served	Percent Served	Eligible/Enrolled	Number Served	Percent Served	Eligible/Enrolled	Number Served	Percent Served	Eligible/Enrolled	Number Served	Percent Served
2009	Jan-Mar	50,328	2,750	5.5%	16,757	771	4.6%	20,780	452	2.2%	26,587	397	1.5%
	Apr-Jun	53,071	3,013	5.7%	17,588	899	5.1%	21,773	519	2.4%	27,625	504	1.8%
	Jul-Sep	55,051	2,858	5.2%	18,215	834	4.6%	22,424	496	2.2%	28,167	548	1.9%
	Oct-Dec	58,776	2,980	5.1%	19,412	905	4.7%	23,654	556	2.4%	29,431	616	2.1%
2010	Jan-Mar	60,435	3,249	5.4%	20,700	871	4.2%	24,116	614	2.5%	31,079	483	1.6%
	Apr-Jun	61,829	3,451	5.6%	21,021	939	4.5%	24,589	636	2.6%	31,277	550	1.8%
	Jul-Sep	63,637	3,221	5.1%	21,461	909	4.2%	25,070	594	2.4%	31,519	565	1.8%
	Oct-Dec	66,382	3,288	5.0%	22,180	925	4.2%	25,967	627	2.4%	32,226	590	1.8%
2011	Jan-Mar	65,928	3,550	5.4%	22,800	918	4.0%	25,853	669	2.6%	32,674	486	1.5%
	Apr-Jun	68,079	3,801	5.6%	23,378	1,014	4.3%	26,481	723	2.7%	33,155	556	1.7%
	Jul-Sep	80,696	3,467	4.3%	27,422	962	3.5%	30,867	690	2.2%	39,160	588	1.5%
	Oct-Dec	71,759	3,583	5.0%	24,289	1,017	4.2%	27,508	787	2.9%	33,660	646	1.9%

Table 5, continued: Quarterly utilization of mental health services by Medicaid eligible/enrolled children, 2009-11

Lane Care MHO													
		Children age 0-17 years			Girls age 2-13			Hispanic/ Latino ethnicity			Young children age 0-6		
Year	Quarter	Eligible/Enrolled	Number Served	Percent Served	Eligible/Enrolled	Number Served	Percent Served	Eligible/Enrolled	Number Served	Percent Served	Eligible/Enrolled	Number Served	Percent Served
2009	Jan-Mar	20,704	1,870	9.0%	6,883	506	7.4%	3,519	104	3.0%	10,454	251	2.4%
	Apr-Jun	21,753	1,980	9.1%	7,244	589	8.1%	3,653	129	3.5%	10,787	302	2.8%
	Jul-Sep	22,436	1,784	8.0%	7,399	548	7.4%	3,750	113	3.0%	10,890	286	2.6%
	Oct-Dec	24,023	1,878	7.8%	7,882	585	7.4%	4,021	115	2.9%	11,519	308	2.7%
2010	Jan-Mar	24,720	2,197	8.9%	8,419	619	7.4%	4,134	146	3.5%	12,276	286	2.3%
	Apr-Jun	25,183	2,306	9.2%	8,481	667	7.9%	4,192	156	3.7%	12,118	351	2.9%
	Jul-Sep	26,015	2,111	8.1%	8,652	647	7.5%	4,247	138	3.2%	12,236	347	2.8%
	Oct-Dec	26,923	2,171	8.1%	8,939	696	7.8%	4,399	142	3.2%	12,447	372	3.0%
2011	Jan-Mar	26,484	2,280	8.6%	9,162	679	7.4%	4,412	170	3.9%	12,604	321	2.5%
	Apr-Jun	27,577	2,339	8.5%	9,451	693	7.3%	4,527	194	4.3%	12,925	369	2.9%
	Jul-Sep	32,529	2,193	6.7%	11,050	667	6.0%	5,283	188	3.6%	15,372	362	2.4%
	Oct-Dec	29,101	2,284	7.8%	9,770	713	7.3%	4,742	173	3.6%	13,259	426	3.2%
Southern Oregon													
Jefferson Behavioral Health (JBH)													
		Children age 0-17 years			Girls age 2-13			Hispanic/ Latino ethnicity			Young children age 0-6		
Year	Quarter	Eligible/Enrolled	Number Served	Percent Served	Eligible/Enrolled	Number Served	Percent Served	Eligible/Enrolled	Number Served	Percent Served	Eligible/Enrolled	Number Served	Percent Served
2009	Jan-Mar	30,928	1,796	5.8%	10,227	446	4.4%	5,899	145	2.5%	15,422	238	1.5%
	Apr-Jun	32,227	1,856	5.8%	10,568	457	4.3%	6,153	146	2.4%	15,906	289	1.8%
	Jul-Sep	33,453	1,699	5.1%	10,870	444	4.1%	6,319	138	2.2%	16,231	285	1.8%
	Oct-Dec	35,890	1,814	5.1%	11,631	504	4.3%	6,709	131	2.0%	17,173	319	1.9%
2010	Jan-Mar	36,573	2,008	5.5%	12,250	490	4.0%	6,875	142	2.1%	18,100	278	1.5%
	Apr-Jun	37,733	2,102	5.6%	12,472	525	4.2%	7,026	149	2.1%	18,422	303	1.6%
	Jul-Sep	39,251	2,019	5.1%	12,843	552	4.3%	7,243	153	2.1%	18,800	377	2.0%
	Oct-Dec	40,911	2,236	5.5%	13,319	618	4.6%	7,575	185	2.4%	19,240	444	2.3%
2011	Jan-Mar	40,490	2,426	6.0%	13,697	620	4.5%	7,520	224	3.0%	19,475	374	1.9%
	Apr-Jun	42,112	2,583	6.1%	14,163	676	4.8%	7,695	238	3.1%	19,972	408	2.0%
	Jul-Sep	50,176	1,814	3.6%	16,739	519	3.1%	8,955	148	1.7%	23,846	346	1.5%
	Oct-Dec	44,678	1,686	3.8%	14,744	439	3.0%	8,038	141	1.8%	20,436	319	1.6%



Table 5, continued: Quarterly utilization of mental health services by Medicaid eligible/enrolled children, 2009-11

Eastern & Rural Oregon													
Greater Oregon Behavioral Health Inc. (GOBHI)													
		Children age 0-17 years			Girls age 2-13			Hispanic/ Latino ethnicity			Young children age 0-6		
Year	Quarter	Eligible/Enrolled	Number Served	Percent Served	Eligible/Enrolled	Number Served	Percent Served	Eligible/Enrolled	Number Served	Percent Served	Eligible/Enrolled	Number Served	Percent Served
2009	Jan-Mar	27,378	1,408	5.1%	9,091	305	3.4%	7,463	114	1.5%	13,992	133	1.0%
	Apr-Jun	28,311	1,556	5.5%	9,342	361	3.9%	7,645	149	1.9%	14,317	190	1.3%
	Jul-Sep	29,365	1,464	5.0%	9,664	372	3.8%	7,932	156	2.0%	14,609	202	1.4%
	Oct-Dec	31,474	1,515	4.8%	10,348	396	3.8%	8,447	146	1.7%	15,467	224	1.4%
2010	Jan-Mar	32,149	1,655	5.1%	11,003	398	3.6%	8,584	168	2.0%	16,267	196	1.2%
	Apr-Jun	32,906	1,669	5.1%	11,126	426	3.8%	8,852	189	2.1%	16,346	212	1.3%
	Jul-Sep	33,863	1,555	4.6%	11,421	428	3.7%	9,021	169	1.9%	16,561	225	1.4%
	Oct-Dec	35,319	1,668	4.7%	11,841	460	3.9%	9,399	175	1.9%	16,993	260	1.5%
2011	Jan-Mar	35,015	2,038	5.8%	12,068	503	4.2%	9,368	240	2.6%	17,224	208	1.2%
	Apr-Jun	36,149	2,082	5.8%	12,340	535	4.3%	9,603	265	2.8%	17,552	243	1.4%
	Jul-Sep	43,126	1,886	4.4%	14,524	509	3.5%	11,288	234	2.1%	21,011	264	1.3%
	Oct-Dec	38,476	1,904	4.9%	12,912	523	4.1%	10,055	239	2.4%	18,099	255	1.4%
Central Oregon & Central Coast													
Accountable Behavioral Health (ABHA)													
		Children age 0-17 years			Girls age 2-13			Hispanic/ Latino ethnicity			Young children age 0-6		
Year	Quarter	Eligible/Enrolled	Number Served	Percent Served	Eligible/Enrolled	Number Served	Percent Served	Eligible/Enrolled	Number Served	Percent Served	Eligible/Enrolled	Number Served	Percent Served
2009	Jan-Mar	18,182	973	5.4%	6,014	222	3.7%	4,384	58	1.3%	9,446	109	1.2%
	Apr-Jun	19,033	1,004	5.3%	6,231	240	3.9%	4,585	79	1.7%	9,647	133	1.4%
	Jul-Sep	19,799	956	4.8%	6,463	252	3.9%	4,659	64	1.4%	9,851	145	1.5%
	Oct-Dec	21,469	987	4.6%	7,057	262	3.7%	4,895	83	1.7%	10,433	149	1.4%
2010	Jan-Mar	22,531	1,224	5.4%	7,713	313	4.1%	5,060	114	2.3%	11,245	140	1.2%
	Apr-Jun	23,100	1,294	5.6%	7,826	330	4.2%	5,099	121	2.4%	11,228	184	1.6%
	Jul-Sep	24,057	1,121	4.7%	8,079	292	3.6%	5,183	100	1.9%	11,390	196	1.7%
	Oct-Dec	25,380	1,288	5.1%	8,450	349	4.1%	5,432	99	1.8%	11,741	235	2.0%
2011	Jan-Mar	7,706	491	6.4%	2,612	121	4.6%	1,611	36	2.2%	3,873	73	1.9%
	Apr-Jun	7,931	487	6.1%	2,674	129	4.8%	1,644	41	2.5%	3,906	60	1.5%
	Jul-Sep	9,446	444	4.7%	3,145	114	3.6%	1,914	36	1.9%	4,703	65	1.4%
	Oct-Dec	8,489	439	5.2%	2,773	110	4.0%	1,761	34	1.9%	4,047	70	1.7%

Table 5, continued: Quarterly utilization of mental health services by Medicaid eligible/enrolled children, 2009-11

PacificSource Community Solutions													
		Children age 0-17 years			Girls age 2-13			Hispanic/ Latino ethnicity			Young children age 0-6		
Year	Quarter	Eligible/ Enrolled	Number Served	Percent Served	Eligible/ Enrolled	Number Served	Percent Served	Eligible/ Enrolled	Number Served	Percent Served	Eligible/ Enrolled	Number Served	Percent Served
2011	Jan-Mar	15,825	932	5.9%	5,465	227	4.2%	3,501	82	2.3%	7,382	114	1.5%
	Apr-Jun	18,402	941	5.1%	6,262	257	4.1%	3,886	71	1.8%	8,492	126	1.5%
	Jul-Sep	21,582	809	3.7%	7,295	231	3.2%	4,418	66	1.5%	9,953	117	1.2%
	Oct-Dec	19,663	896	4.6%	6,575	234	3.6%	3,993	69	1.7%	8,747	134	1.5%

Table 6: Statewide utilization and highest, lowest rates among MHOs, by population and calendar quarter, 2009-11

		Children age 0-17 years			Girls age 2-13			Hispanic/ Latino ethnicity			Young children age 0-6		
Year	Quarter	Statewide	Lowest MHO	Highest MHO	Statewide	Lowest MHO	Highest MHO	Statewide	Lowest MHO	Highest MHO	Statewide	Lowest MHO	Highest MHO
2009	Jan-Mar	5.2%	4.5%	9.0%	3.9%	3.0%	7.4%	1.8%	1.3%	3.0%	1.3%	0.9%	2.4%
	Apr-Jun	5.4%	4.5%	9.1%	4.3%	3.3%	8.1%	2.0%	1.7%	3.5%	1.6%	1.0%	2.8%
	Jul-Sep	4.9%	2.7%	8.0%	4.1%	2.6%	7.4%	1.8%	0.9%	3.0%	1.6%	0.9%	2.6%
	Oct-Dec	5.0%	3.6%	7.8%	4.3%	3.2%	7.4%	2.0%	1.7%	2.9%	1.8%	1.3%	2.7%
2010	Jan-Mar	5.6%	4.2%	8.9%	4.1%	3.1%	7.4%	2.2%	1.9%	3.5%	1.4%	0.9%	2.3%
	Apr-Jun	5.7%	4.3%	9.2%	4.4%	3.6%	7.9%	2.4%	1.9%	3.7%	1.7%	1.2%	2.9%
	Jul-Sep	5.1%	4.4%	8.1%	4.1%	3.6%	7.5%	2.1%	1.6%	3.2%	1.8%	1.4%	2.8%
	Oct-Dec	5.2%	4.4%	8.1%	4.2%	3.6%	7.8%	2.2%	1.8%	3.2%	1.9%	1.5%	3.0%
2011	Jan-Mar	5.7%	4.6%	8.6%	4.2%	3.5%	7.4%	2.5%	1.9%	3.9%	1.5%	1.2%	2.5%
	Apr-Jun	5.8%	5.0%	8.5%	4.4%	3.7%	7.3%	2.7%	1.8%	4.3%	1.7%	1.4%	2.9%
	Jul-Sep	4.8%	3.3%	6.7%	3.9%	2.9%	6.0%	2.3%	1.5%	3.6%	1.7%	1.2%	2.4%
	Oct-Dec	4.9%	3.8%	7.8%	4.0%	3.5%	7.3%	2.5%	1.7%	3.6%	1.8%	1.4%	3.2%

**Table 7: Average quarterly utilization rates by child population and MHO, 2011 calendar year**

	Children age 0-17 years			Girls age 2-13			Hispanic/ Latino ethnicity			Young children age 0-6		
	OHP Eligible	Number Served	Percent Served	OHP Eligible	Number Served	Percent Served	OHP Eligible	Number Served	Percent Served	OHP Eligible	Number Served	Percent Served
Statewide	354,923	18,804	5.3%	120,473	4,971	4.1%	106,890	2,682	2.5%	165,162	2,749	1.7%
ABHA	8,393	465	5.5%	2,801	119	4.2%	1,733	37	2.1%	4,132	67	1.6%
CLACKAMAS	20,783	1,036	5.0%	6,970	245	3.5%	6,532	128	2.0%	9,269	151	1.6%
FAMCARE	27,959	1,180	4.2%	9,400	336	3.6%	7,275	155	2.1%	14,860	206	1.4%
GOBHI	38,192	1,978	5.2%	12,961	518	4.0%	10,079	245	2.4%	18,472	243	1.3%
JBH	44,364	2,127	4.8%	14,836	564	3.8%	8,052	188	2.3%	20,932	362	1.7%
LANECARE	28,923	2,274	7.9%	9,858	688	7.0%	4,741	181	3.8%	13,540	370	2.7%
MVBCN	71,616	3,600	5.0%	24,472	978	4.0%	27,677	717	2.6%	34,662	569	1.6%
PACSOURCE	18,868	895	4.7%	6,399	237	3.7%	3,950	72	1.8%	8,644	123	1.4%
VERITY	51,532	2,714	5.3%	17,750	724	4.1%	15,734	495	3.1%	24,439	381	1.6%
WASHCO	32,445	1,575	4.9%	11,276	387	3.4%	15,650	382	2.4%	15,559	208	1.3%
No MHO	42,496	1,700	4.0%	13,719	323	2.4%	13,251	165	1.2%	16,662	151	0.9%

**APPENDIX B: References for Prevalence Estimates**

Child and Adolescent Health Measurement Initiative. *2007 National Survey of Children's Health Dataset*. National Center for Health Statistics, Hyattsville, MD. Retrieved from Data Resource Center for Child and Adolescent Health,

<http://www.childhealthdata.org>.

Holzer, C. E. III & Nguyen, H.T., Ph.D. *Estimation of Need for Mental Health Services*. <http://172.10.175.217/estimation/estimation.htm>

Pastor P.N., Reuben C.A. & Duran C.R. (2012) *Identifying emotional and behavioral problems in children aged 4–17 years: United States, 2001–2007*. National health statistics reports #48. Hyattsville, MD: National Center for Health Statistics.

<http://198.246.98.21/nchs/data/nhsr/nhsr048.pdf>

Pires, Sheila. (2008) *Building Systems of Care: A Primer for Child Welfare*, p. 18.

<http://gucchd.georgetown.edu/72377.html>

State Data Infrastructure Coordinating Center (SDICC). *URS Table 1: Estimated Number of Children and adolescents, age 9 to 17, with Serious Emotional Disturbance, by State, 2004*. NRI Inc., Falls Church, VA.

<http://www.nri-inc.org/projects/SDICC/Reports/SED2005.pdf>

Stroul, B.A. & Friedman, R.M. (1986) *A system of care for children and youth with severe emotional disturbances, revised edition*. Washington DC: Georgetown University Child Development Center, CASSP Technical Assistance Center, pp. 9-10.

Substance Abuse and Mental Health Services Administration. (2010) *Mental Health, United States, 2008*. HHS Publication No. (SMA) 10-4590, Rockville, MD: Center for Mental Health Services, SAMHSA. *Table 1.2: Percentage of Children Aged 4-17 with Reported Emotional and Behavioral Difficulties by Level of Severity and Selected Characteristics: United States, 2006* (p. 87).

<http://store.samhsa.gov/shin/content/SMA10-4590/SMA10-4590.pdf>.

Substance Abuse and Mental Health Services Administration. (2012) *Mental Health, United States, 2010*. HHS Publication No. (SMA) 12-4681. Rockville, MD: SAMHSA. *Table 8: Percentage of persons aged 4 to 17 with reported emotional and behavioral difficulties, by level of severity and selected characteristics, United States, 2009* (p. 98). <http://www.samhsa.gov/data/2k12/MHUS2010/MHUS-2010.pdf>

Zill, N. & Schoenborn, C.A. (1990) *Developmental, learning, and emotional problems: Health of our nation's children, United States, 1988*. Advance data from vital and health statistics; #190, Hyattsville, Maryland: National Center for Health Statistics.