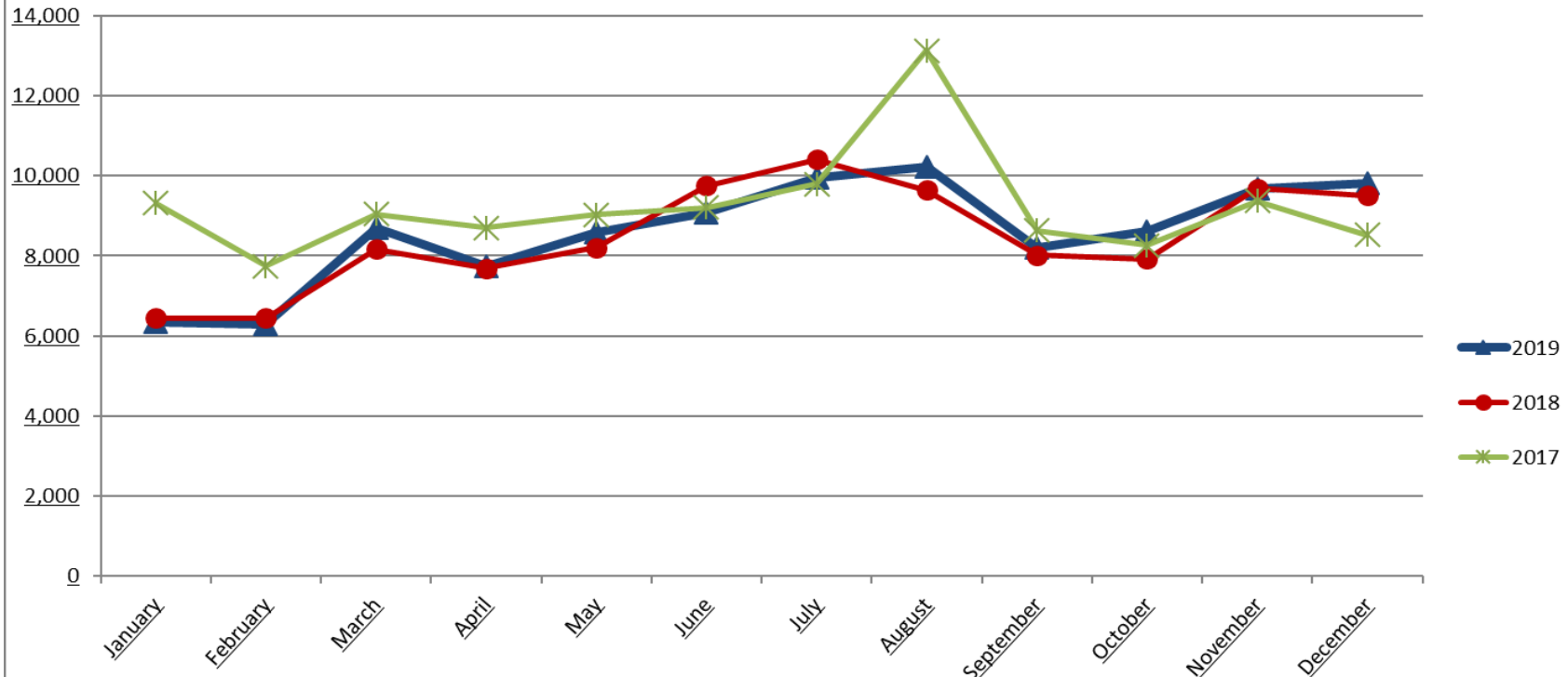


# Amtrak Cascades Ridership in the Eugene-Portland Corridor

TRAINS OPERATED UNDER CONTRACT FOR THE OREGON DEPARTMENT OF TRANSPORTATION

TRAIN		JAN	FEB	MAR	APR	MAY	JUN	JUL	AUG	SEP	OCT	NOV	DEC	YEAR
<b>500</b>	<b>2019</b>	1,528	1,307	1,749	1,682	1,779	1,812	1,986	2,156	1,656	1,817	1,418	1,780	20,670
<b>506</b>		441	645	978	731	840	1,070	974	1,089	929	823	1,571	1,231	11,322
<b>508</b>		1,329	1,435	1,981	1,814	2,015	1,930	2,153	2,182	1,718	2,099	2,261	2,233	23,150
Northward Trains		3,298	3,387	4,708	4,227	4,634	4,812	5,113	5,427	4,303	4,739	5,250	5,244	55,142
<b>511 (M-F)</b>		395	392	561	558	568	675	789	760	572	744	586	730	7,330
<b>513 (S-S-H)</b>		260	334	545	352	397	536	486	513	435	367	802	696	5,723
<b>505</b>		2,383	2,170	2,892	2,598	2,987	3,043	3,559	3,530	2,893	2,750	3,033	3,152	34,990
Southward Trains		3,038	2,896	3,998	3,508	3,952	4,254	4,834	4,803	3,900	3,861	4,421	4,578	48,043
<b>All</b>		6,336	6,283	8,706	7,735	8,586	9,066	9,947	10,230	8,203	8,600	9,671	9,822	103,185
<b>500</b>	<b>2018</b>	1,324	1,226	1,724	1,556	1,793	1,783	2,136	2,095	1,594	1,610	1,864	1,526	20,231
<b>506</b>		473	650	717	747	741	950	1,072	869	1,134	787	1,135	1,522	10,797
<b>508</b>		1,496	1,560	2,055	1,751	1,944	2,704	2,452	2,304	1,591	1,886	2,323	2,140	24,206
Northward Trains		3,293	3,436	4,496	4,054	4,478	5,437	5,660	5,268	4,319	4,283	5,322	5,188	55,234
<b>511 (M-F)</b>		419	451	557	514	452	652	685	738	468	506	584	499	6,525
<b>513 (S-S-H)</b>		418	278	349	425	334	473	515	389	487	338	593	689	5,288
<b>505</b>		2,321	2,282	2,770	2,699	2,946	3,189	3,546	3,247	2,743	2,796	3,187	3,127	34,853
Southward Trains		3,158	3,011	3,676	3,638	3,732	4,314	4,746	4,374	3,698	3,640	4,364	4,315	46,666
<b>All</b>		6,451	6,447	8,172	7,692	8,210	9,751	10,406	9,642	8,017	7,923	9,686	9,503	101,900
<b>500/512</b>	<b>2017</b>	1,664	1,671	2,059	1,720	1,930	2,109	2,010	2,717	1,827	1,939	1,736	1,534	22,916
<b>506/514</b>		901	731	839	938	875	875	1,203	959	1,078	794	1,208	1,027	11,428
<b>508/510</b>		2,263	1,978	2,300	2,220	2,244	2,256	2,348	3,139	1,831	1,888	2,326	2,164	26,957
Northward Trains		4,828	4,380	5,198	4,878	5,049	5,240	5,561	6,815	4,736	4,621	5,270	4,725	61,301
<b>503/511 (M-F)</b>		560	539	672	552	559	544	462	902	533	506	303	715	6,847
<b>505/513 (S-S-H)</b>		420	276	333	382	332	294	412	693	380	243	570	565	4,900
<b>507/505</b>		3,508	2,551	2,833	2,890	3,085	3,132	3,358	4,200	2,986	2,897	3,229	2,520	37,189
Southward Trains		4,488	3,366	3,838	3,824	3,976	3,970	4,232	5,795	3,899	3,646	4,102	3,800	48,936
Special Eclipse									519					519
<b>All</b>	9,316	7,746	9,036	8,702	9,025	9,210	9,793	13,129	8,635	8,267	9,372	8,525	110,756	

## Amtrak Cascades Ridership in the Eugene – Portland Corridor Trains Operated Under Contract for the Oregon Department of Transportation



Oct – Dec - Oct 2019 showed a 8.5% increase and Dec showed a 3.4% increase over the same time period in 2018, respectively. Nov 2019 showed a 0.2% decrease when compared to Nov 2018 ridership.

July-Sep - July 2019 showed a 4.4% decrease in ridership in contrast to July 2018, whereas August 2019 ridership increased 6.1% and September 2019 ridership showed an increase of 2.3%. The decrease in ridership in July 2019 has no outwardly known cause other than the natural progression of waxing and waning in ridership. Overall, 2019 ridership continues to track closely with ridership in 2018.

Apr-Jun 2019 - April ridership was up 0.6%, and May ridership increased 4.6% when compared to the same months in 2018. June ridership shows a 7.0% decrease compared to the same months in 2018.

Jan-Mar 2019 - January ridership was down 1.8% and down 2.5% in February when compared to the same months in 2018. Scheduled host railroad maintenance required the cancellation of 32 trains in January and 14 in February. Weather conditions caused the host railroad to shut down all operations on a portion of the rail line that Amtrak Cascades operates over causing the cancellation of an addition 12 trains in February. March ridership shows a 6.5% increase compared to 2018.