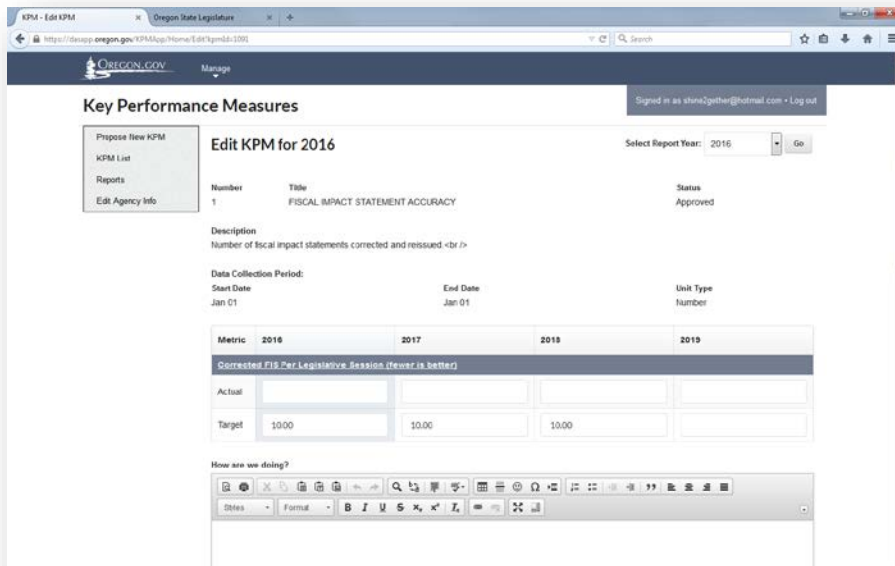
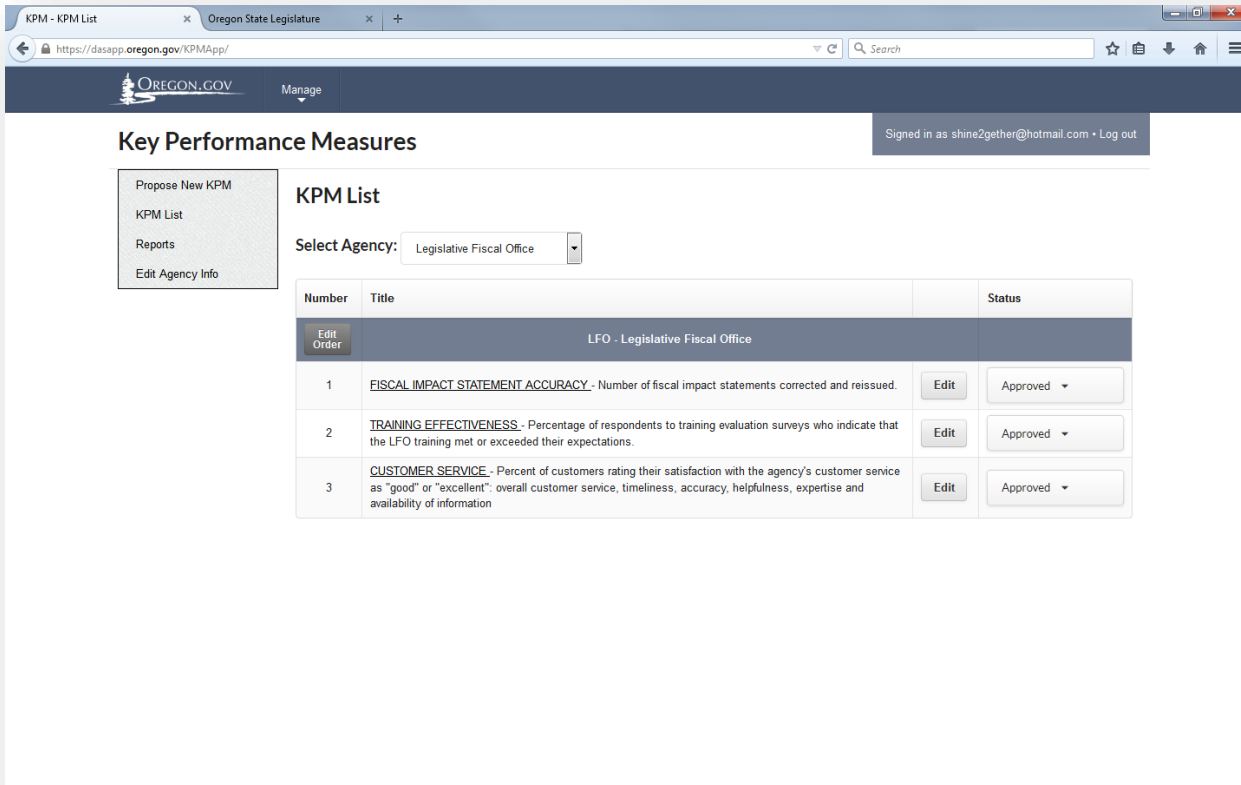


EDIT KPM

- Click on “Edit” button for KPM you wish to update data for.



The screen will open to Edit KPM to allow for edits.

KPM - Edit KPM Oregon State Legislature

https://dasapp.oregon.gov/KPMApp/Home/Edit?kpmId=1091

OREGON.GOV Manage

Signed in as shine2gether@hotmail.com • Log out

Key Performance Measures

Propose New KPM
KPM List
Reports
Edit Agency Info

Edit KPM for 2016

Select Report Year: 2016 Go

Number 1 Title FISCAL IMPACT STATEMENT ACCURACY Status Approved

Description
Number of fiscal impact statements corrected and reissued.

Data Collection Period:
Start Date Jan 01 End Date Jan 01 Unit Type Number

	2018	2019
Corrected FIS Per Legislative Session (fewer is better)		
Actual		
Target	10.00	10.00

How are we doing?

View Historical Metric Data - Past and Current Metric Data

- Click on the Metric Name - a new tab will open displaying your Historical Data for the selected measure

KPM - Edit KPM KPM - Historical data Oregon State Legislature

https://dasapp.oregon.gov/KPMApp/Home/MetricHistorical?metricId=879

OREGON.GOV

Signed in as shine2gether@hotmail.com • Log out

Key Performance Measures

Historical data for Corrected FIS Per Legislative Session (fewer is better)

Corrected FIS Per Legislative Session (fewer is better)	2001	2003	2005	2007	2009	2011	2012	2013	2014	2015	2016	2017	2018	2019
Actual	7	5	2	3	9	11	No Data	No Data	No Data	No Data	No Data	No Data	No Data	No Data
Target	0	0	0	0	0	5	5	5	10	10	10	10	10	TBD

KPM - Edit KPM Oregon State Legislature

https://dasapp.oregon.gov/KPMApp/Home/Edit?kpmid=1091

OREGON.GOV Manage

Key Performance Measures

Signed in as shine2gether@hotmail.com - Log out

Propose New KPM
KPM List
Reports
Edit Agency Info

Edit KPM for 2016

Select Report Year: 2016 Go

Number	Title	Status
1	FISCAL IMPACT STATEMENT ACCURACY	Approved

Description
Number of fiscal impact statements corrected and reissued.

Data Collection Period:
Start Date Jan 01 End Date Jan 01 Unit Type Number

Metric	2016	2017	2018	2019
Corrected FIS Per Legislative Session (fewer is better)				
Actual				
Target	10.00	10.00	10.00	

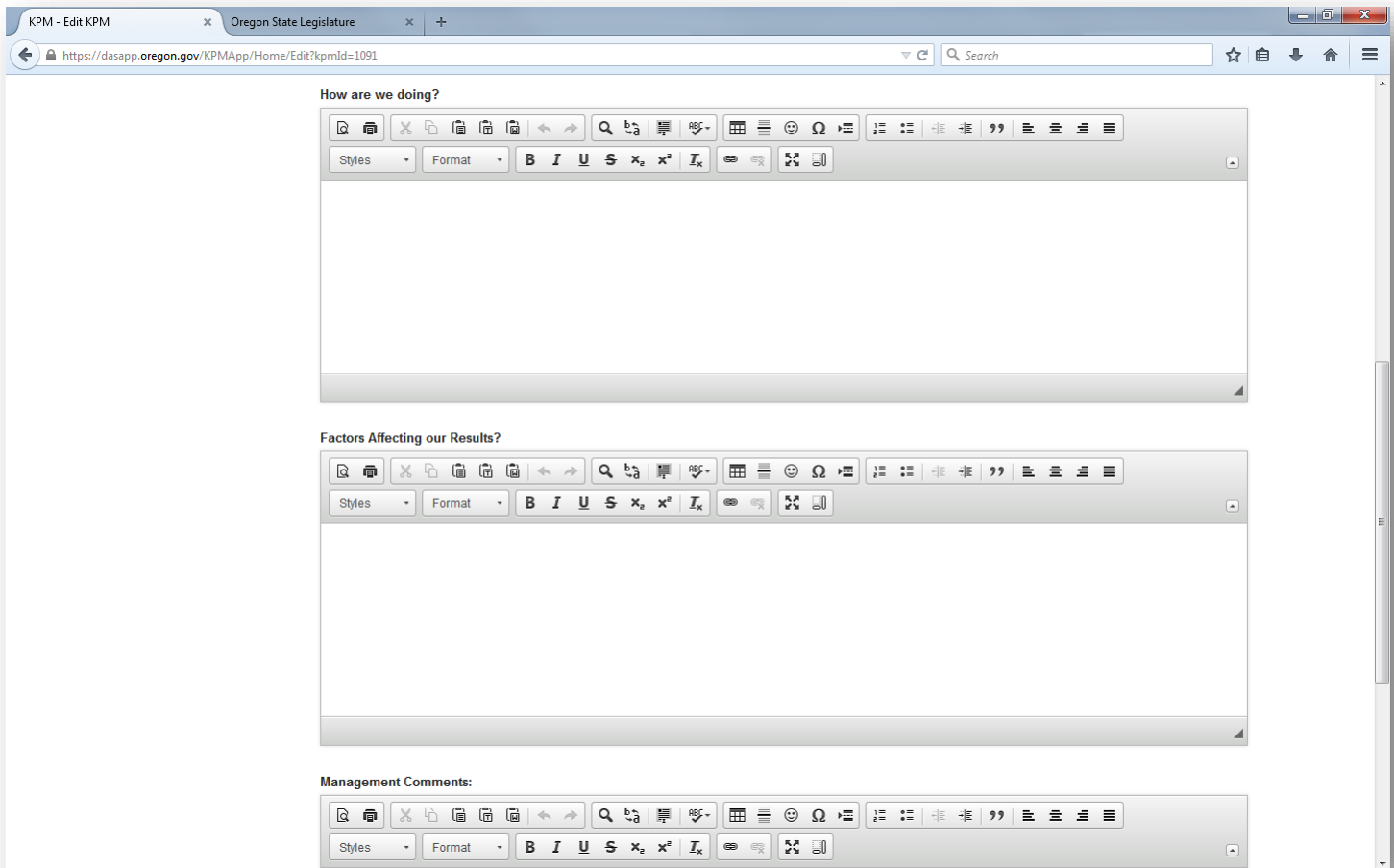
How are we doing?

Rich text editor toolbar with options for Bold, Italic, Underline, Strikethrough, Text Color, Background Color, Bulleted List, Numbered List, Indent, Outdent, Link, Unlink, Undo, Redo, and Help.

- Enter the actual for the **current year**
- **Do not edit target unless it is for the future biennia-** target is approved by the legislature each biennium and modifications may not be made without legislative approval.

How we are Doing?

Insert an objective, stand-alone summary of agency progress on this measure, referring wherever possible to recent data and the trend. Hypothetical example: "In 2015, the child maltreatment rate for children participating in Program X was 60% of those not participating. This measure was at target in 2013 and 2014. The general trend between 2010 and 2015, however, shows a worsening."



The screenshot shows a web browser window with the URL <https://dasapp.oregon.gov/KPMApp/Home/Edit?kpmId=1091>. The browser has two tabs: 'KPM - Edit KPM' and 'Oregon State Legislature'. The page content consists of three vertically stacked text editors, each with a rich text toolbar. The first editor is titled 'How are we doing?', the second is 'Factors Affecting our Results?', and the third is 'Management Comments:'. All three editors are currently empty.

Factors Affecting Results

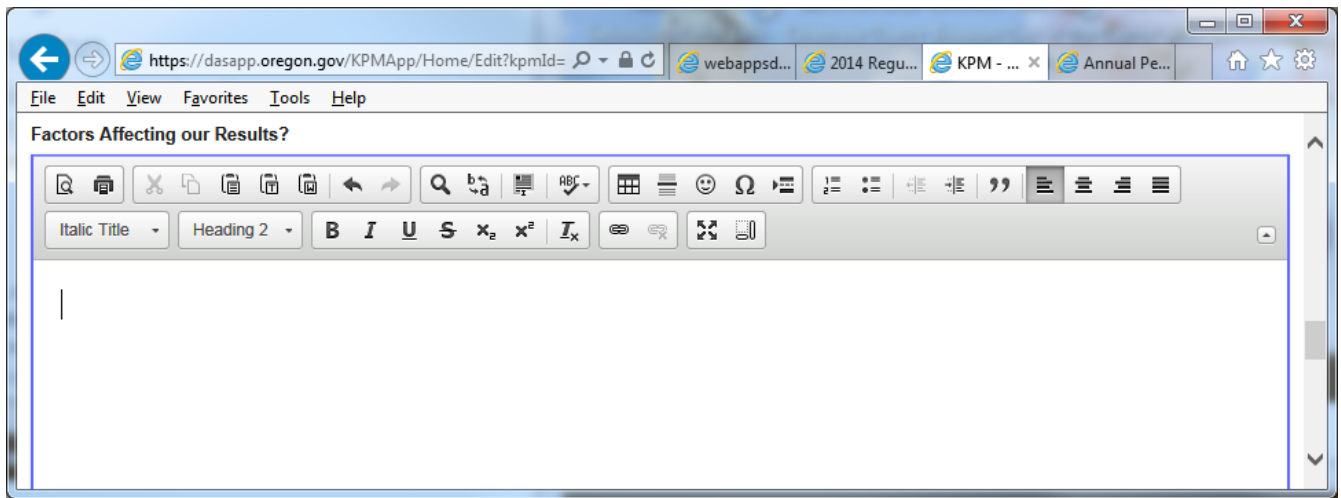
Explain any factors affecting results, such as barriers and facilitators. This is an opportunity to explain the "why" behind the statement in How we are Doing.

Management Comments

Comments here only display in the Agency Management Report.


This report provides high-level performance information which may not be sufficient to fully explain the complexities associated with some of the reported measurement results. Please reference the agency's most recent Annual Performance Progress Report to better understand a measure's intent, performance history, factors impacting performance and data gather and calculation methodology.

Text Editor



The system allows for the following text editing:

Print Preview	Left justify
Printing	Center
Cut	Right justify
Copy	Justify
Paste	Bold
Paste as plain text	Italic
Paste from Word	Underline
Undo	Subscript
Redo	Superscript
Find	Remove format
Replace	Link
Select All	Unlink
Spell Check	Maximize
Insert Tables	Show blocks
Insert Horizontal Line	
Insert Special Character	
Insert page break for printing	
Insert/remove numbering	
Insert/remove bullets	
Decrease indent	
Increase indent	
Block quote	

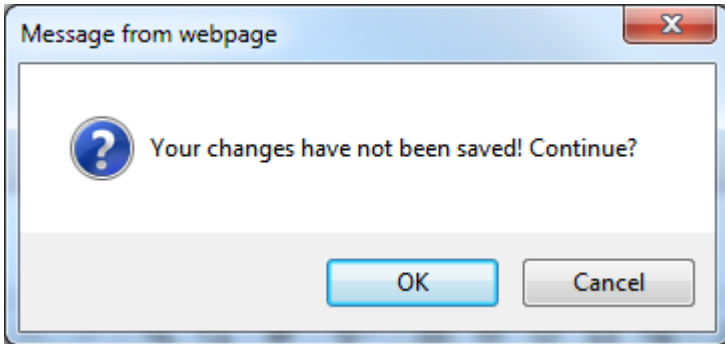
To view a text box on the entire screen, click on the “Maximize”  button. Click the button again to minimize.

Back to List Button

Takes one back to the KPM List screen without saving edits.

A prompt opens letting you know you have not made changes if you have not saved your work yet.

- Clicking "OK" directs you to the KPM List screen.
- Clicking "Cancel" keeps you on the screen to save changes.

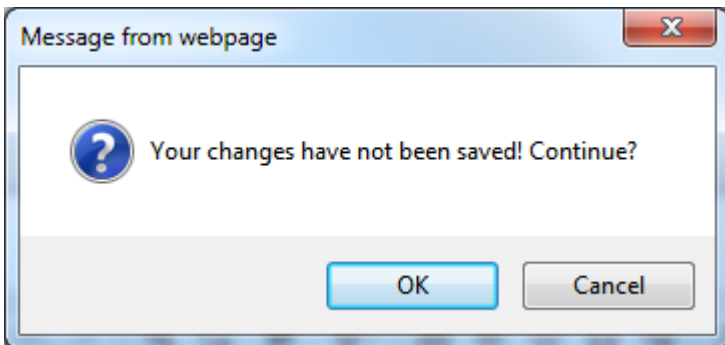


Cancel Edit Button

Cancels all edits made on the page made prior to saving.

A prompt opens letting you know you have not made changes if you have not saved your work yet.

- Clicking "OK" refreshes the screen clearing all edits made.
- Clicking "Cancel" keeps you on the screen to save changes.

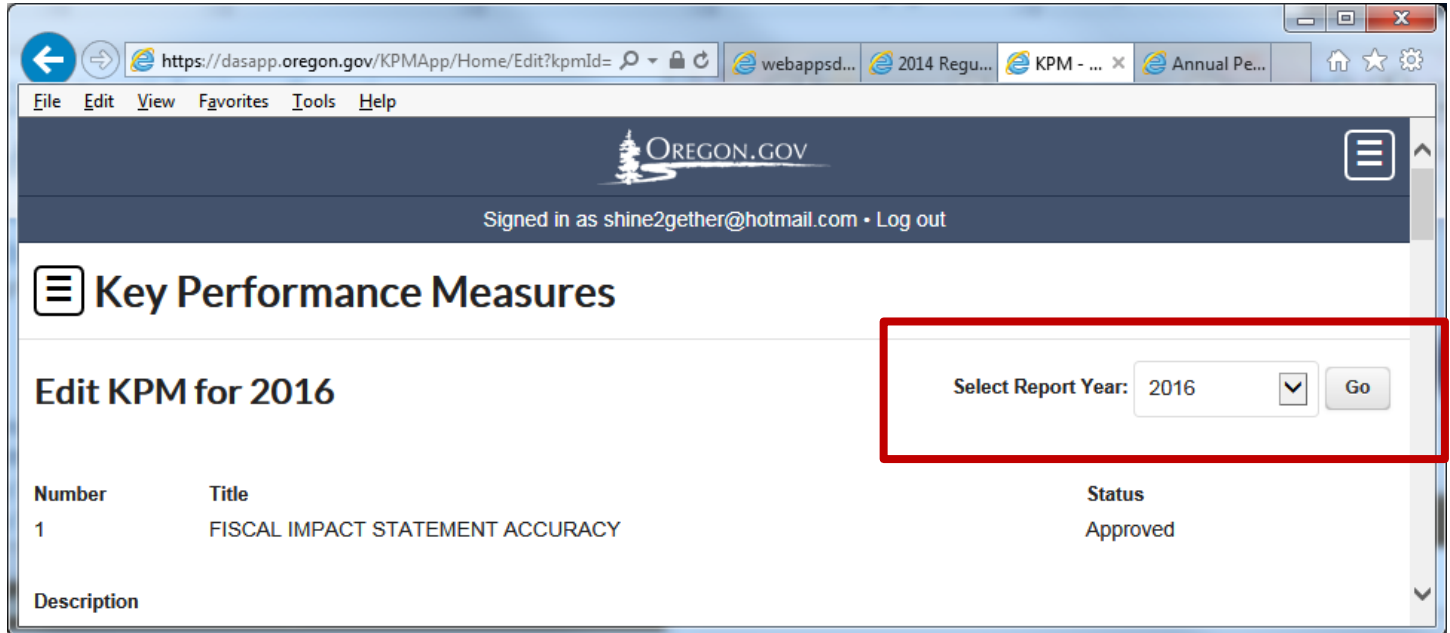


Save Button

Saves all your work

Editing Previous Year Actuals

Select the “Select Report Year” dropdown to view past information posted for the measure or to update incorrect actuals reported in a previous report.



The screenshot shows a web browser window with the URL <https://dasapp.oregon.gov/KPMApp/Home/Edit?kpmId=>. The page is titled "Key Performance Measures" and "Edit KPM for 2016". The user is signed in as shine2gether@hotmail.com. A red box highlights the "Select Report Year:" dropdown menu, which is currently set to "2016", and the "Go" button next to it.

Number	Title	Status
1	FISCAL IMPACT STATEMENT ACCURACY	Approved

Description

NOTE: editing previously reported data does **NOT update the previously issued reports. December 31st of the current year is the last day to update the APPR for that year.*

- Click on “Select Report Year” dropdown
- Select the year you wish to view or update data for
- Click the “Go” button