



## Notice of Work

To: Capitol Building

From: Oregon State Capitol Renovation (OSCR) Team

Date: April, 9 2014

The following OSCR project team members will be working in various locations on Capitol grounds:

- Approximately 8 representatives from GRI, Western States Soil Conservation, Cascade Drilling, and GeoVision

Date and time of work:

- Work begins on Monday, April 14<sup>th</sup> 2014 and will continue through Friday, May 2<sup>nd</sup>, 2014.
- Work will be done between the hours of 7:30 a.m. and 6:00 p.m. daily.

Location of work:

- Work will be done on Capitol grounds in the locations designated on the attached map.  
**\*\* Please see the attached plan for more detailed information\*\***

Work to be performed and impacts:

- Monday, April 14<sup>th</sup> – Wednesday, April 23<sup>rd</sup>:
  - The sonic drill rig (see photo below) and support vehicles will be delivered on Monday, April 14<sup>th</sup>.
  - Team members will be drilling a hole with a diameter of approximately 8” on the South side of the Capitol in the location designated with a blue pin on the attached map. Work will be conducted between the hours of **8:30 a.m. and 6:30 p.m.**
  - Angled parking on the South side of the building, as outlined on the map below, will be blocked off and unavailable for parking during this time.
  - During non-working hours, the sonic drill rig will remain over the hole on the South side of the Capitol grounds until the evening of Friday, April 18<sup>th</sup> when a weighted steel plate will be placed over the top of the hole. The steel plate will remain in place until the geophysical survey is completed Tuesday, April 22<sup>nd</sup>- Wednesday, April 23<sup>rd</sup>. Upon completion of the survey, the hole will be filled and patched with asphalt.
  - This work will produce quite a bit of noise periodically throughout the day. Sounds you can expect to hear include diesel engines running where equipment is being used and occasionally, throughout the work being conducted, wrenching and

900 Court Street NE | Room 354 | Salem, OR 97301

503.986.1190

<http://www.oregonlegislature.gov/renovation/>

some loud clanking or banging on the machinery. Those working at the Capitol will be able to hear the hammering sounds from within the building.

- Monday, April 21<sup>st</sup> – Friday, May 2<sup>nd</sup>:

- The track-mounted drill rig (see photo below) will be delivered on Monday, April 21<sup>st</sup> at approximately 8:00 a.m.
- The team will be drilling holes with a diameter of approximately 4” in the locations designated with a yellow and red pin on the map below. The team will be using a rotary drill to perform this work and will be working between the hours of **7:30 a.m. and 6:00 p.m.**
- The team will begin on the East side of the building and finish on the West.
- This work will produce quite a bit of noise periodically throughout the day. Sounds you can expect to hear include diesel engines running where equipment is being used and occasionally, throughout the work being conducted, loud hammering of steel on steel. Those working at the Capitol will be able to hear the hammering sounds from within the building.
- Several parking spaces on the street in front of the building will be blocked off while the drilling is taking place. These parking spaces are outlined in red on the map below.
- The track mounted drill will remain over all open holes during non-working hours. Upon completion of the survey in these areas, the holes will be filled with clay chips and the grass plug will be put back. In all locations where they are measuring ground water, the holes will be covered with an 8”-10” diameter steel monument that is flush with the ground.
- Sidewalks will remain open, with the exception of the sidewalk near the hole on the Northwest side of the grounds. In this location, the machinery will be staged on the sidewalk while the hole is being drilled. The machine has rubber tracks to prevent damage to sidewalks. Sidewalk closure signs and cones will be placed on the beginning of the walkways and foot traffic will be rerouted.
- In areas where they are drilling in grass, fiberglass mats will be used to track the equipment to the location of the hole and back. This is expected to cause some minor rutting in the grass. The team has developed a restoration plan with State Parks in the event that minor improvements are needed after the completion of the work.

**Purpose of work:**

- This work is being done to confirm the type and condition of the soil surrounding the building to assist in the seismic design for the building.

It is our goal to gather the above information in the most discreet method possible. Should any questions or concerns arise in the process of the work being conducted, we welcome you to contact us in Room 354 at 503.986.1190.

Thank you,

Jessica Lacasella

Project Communications Coordinator

P: 503.986.1190 | Email: [jessica.lacasella@state.or.us](mailto:jessica.lacasella@state.or.us)

## Photos of Proposed Drilling Equipment

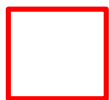
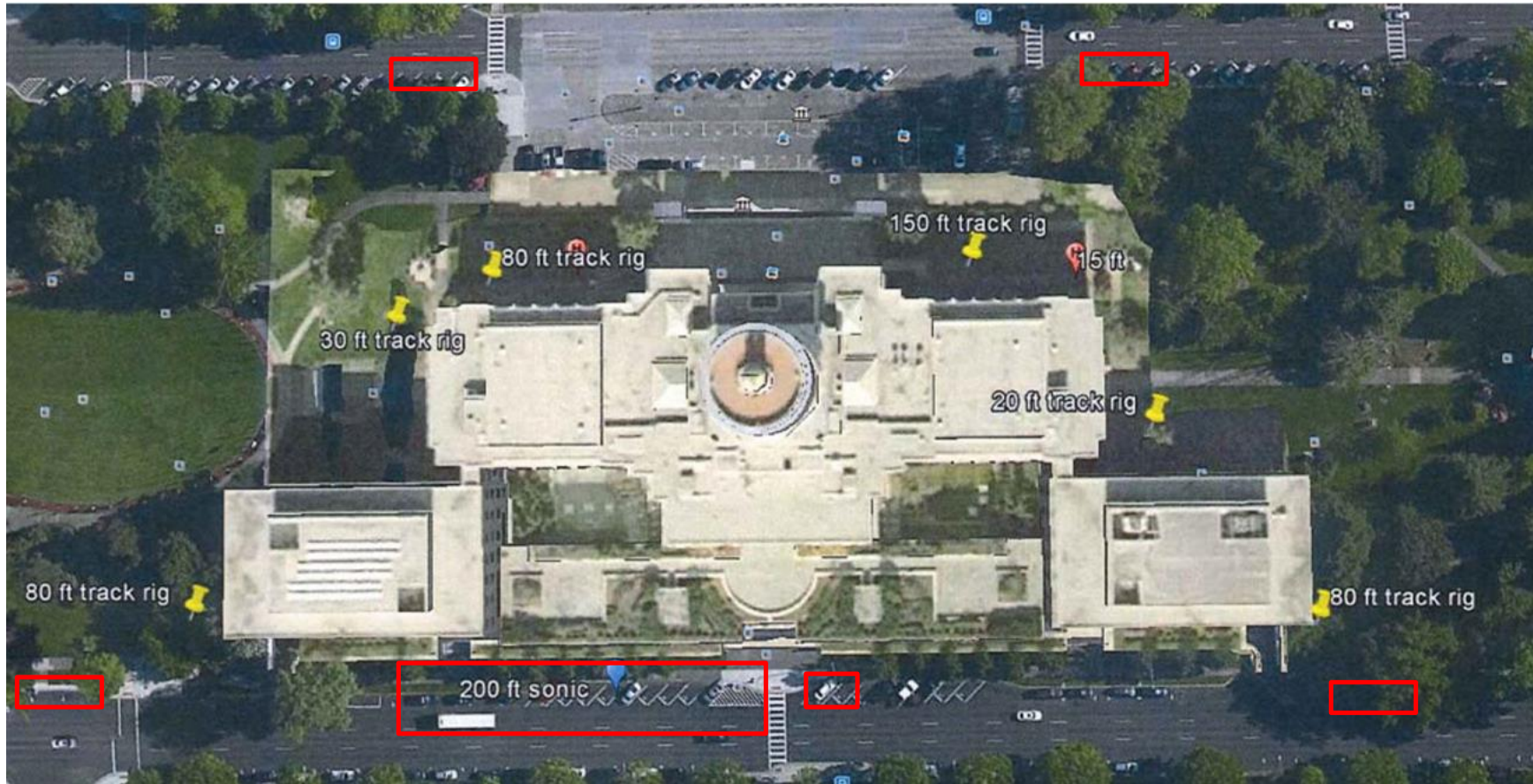


Track-Mounted Mud-Rotary Drill Rig



Sonic Drill Rig (For Exploration South of Capitol)

## Site Plan With Proposed Boring Locations



Parking will be closed in these areas while the exterior work is being conducted.