

Notice of Work

To: Capitol Building

From: Oregon State Capitol Renovation (OSCR) Team

Date: April, 3 2014

The following OSCR project team members will be working throughout the building:

- Several representatives from JE Dunn, SRG, and some sub consultants.

Date and time of work:

- Work begins on Monday, April 7th 2014 and will continue through Friday, May 2nd, 2014.
- Work will be done between the hours of 7:30 a.m. and 12:00 a.m. daily.

Location of work:

- Work will affect the following rooms and areas on the Ground Floor of the Capitol:
 - Archives- Rm C-064B
 - Hallway between Rm C-064A and Rm C-063
 - Hallways from Room C-064B to the Capitol garage
- Air quality will be monitored in each of these locations while any abatement is being done to ensure hazardous materials are not polluting the air.

**** Please see the attached plan for more detailed information on how these areas will be affected****

Work to be performed:

- Monday, April 7th – Wednesday, April 9th:
 - Team members will be drilling in the three locations listed above and outlined on the attached plan, between the hours of **5:00 p.m. and 12:00 a.m. or prior to 8:00 a.m.**
- Tuesday, April 8th – Monday, April 21st:
 - The team will hand excavate using shovels to expose footings between the hours of **5:00 p.m. and 12:00 a.m.** Wheelbarrows will be used to remove soil from the area. Please see the attached plan for the route the team will use for the removal.
- Wednesday, April 22nd – Friday, May 2nd:
 - Team members from SRG will examine and document the exposed footings.
 - JE Dunn and subs will begin backfill excavations the **night of Wednesday, April 22nd between the hours of 5:00 p.m. and 12:00 a.m. or prior to 8:00 a.m.**
 - Saturday, April 26th the team will replace the concrete slab that was removed to perform the investigation of the footings between the hours of **5:00 p.m. and 12:00 a.m. or prior to 8:00 a.m.**
 - Between Thursday, May 1st and Friday, May 2nd, carpet will be reinstalled in the affected areas.

Impacts:

- A dewatering hose will run from the locations of the drilling, inside the building, to the Loading Dock area through hallways. A generator will be located in the garage to operate the dewatering hose and may be on from time to time. This will produce some noise.
- All locations where work is being done and at routes used to remove materials, protective materials will be installed prior to any work being conducted. Protective materials include:
 - Plastic floor coverings from drill locations to the garage
 - Core-board at door jambs/frames and on the door face 4' high to provide impact protection
 - Foam will be wrapped and taped around door knobs
 - Plastic poly sheets will be used to protect walls and will extend from floor to ceiling
 - Masonite, a hard board, with taped joints will be installed to 4' high in corridors
 - Plastic poly sheet will be draped over any fixtures, furniture, or equipment that remains in the space.
- **Corridor at the west end of the garage, leading to Room C-064 will be closed.** Foot traffic entering the Capitol from the West end of the Capitol garage will be rerouted to the Room 49 entrance.
- Representatives from JE Dunn will be stationed at access points surrounding the work locations to assist in redirecting foot traffic.

Purpose of work:

- This work is being done to determine the type and existing condition of the building footings. This information will assist the architects in the design process.

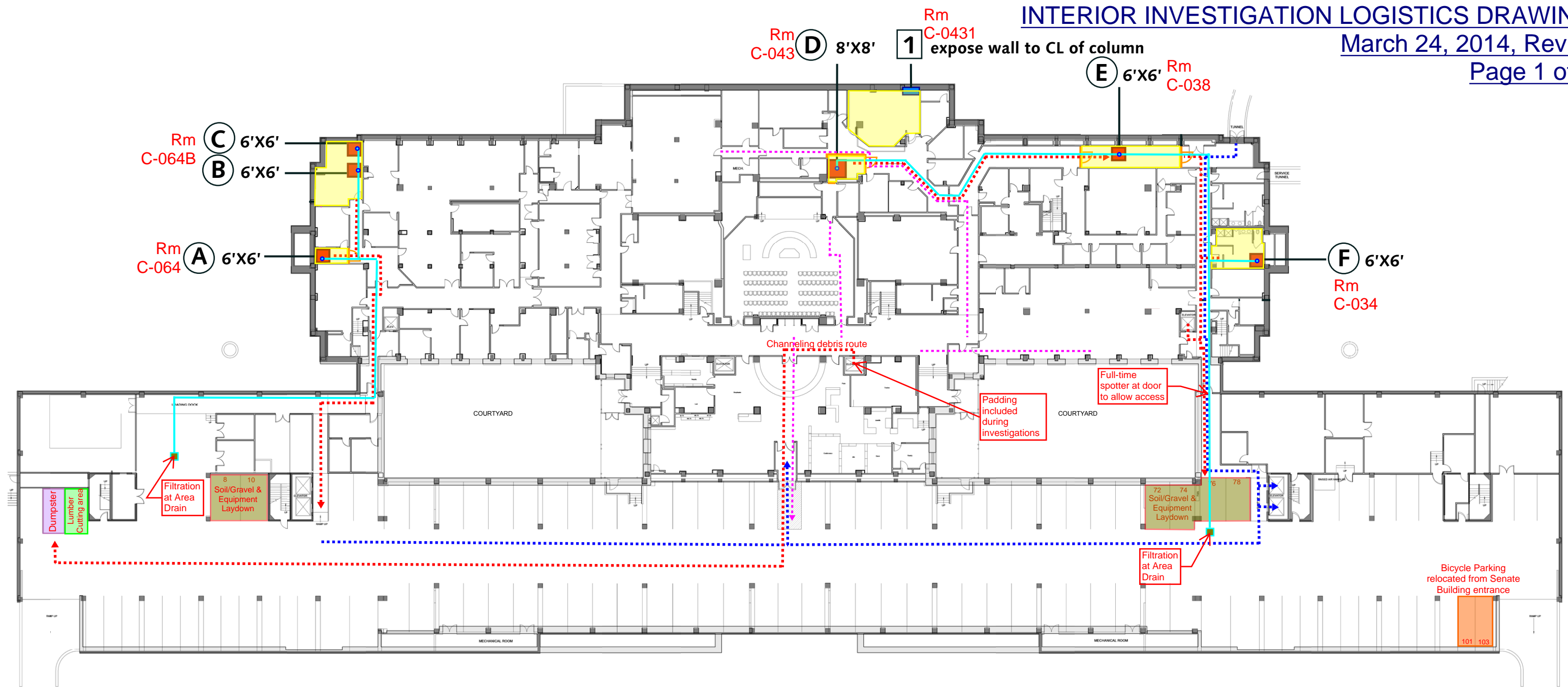
It is our goal to gather the above information in the most discreet method possible. Should any questions or concerns arise in the process of the work being conducted, we welcome you to contact us in Room 354 at 503.986.1190.

Thank you,

Jessica Lacasella

Project Communications Coordinator

P: 503.986.1190 | Email: jessica.lacasella@state.or.us



■ 1-3 Cladding Survey - (three locations)

Expose and document representative vertical strips at three locations (encompassing levels as indicated on plans) on the interior side of the exterior wall. This will allow for visual confirmation of brick bracing wall construction and non-destructive location of anchors from brick wall to stone panels. The goal is to determine the size, spacing, and character of anchors and to allow a visual condition survey of the brick bracing wall. With these conditions exposed, we would also like to get the following information in several locations:

- Brick wall thickness (and number of wythes).
- Note brick wall layup to see if header courses exist to tie wythes of masonry together. Note spacing of header courses.
- Dimension of gap between brick wall and stone panel.
- Condition of wall at slab/beam soffit above and adjacent columns to observe if there are gaps or if the brick wall is tight to the concrete framing.

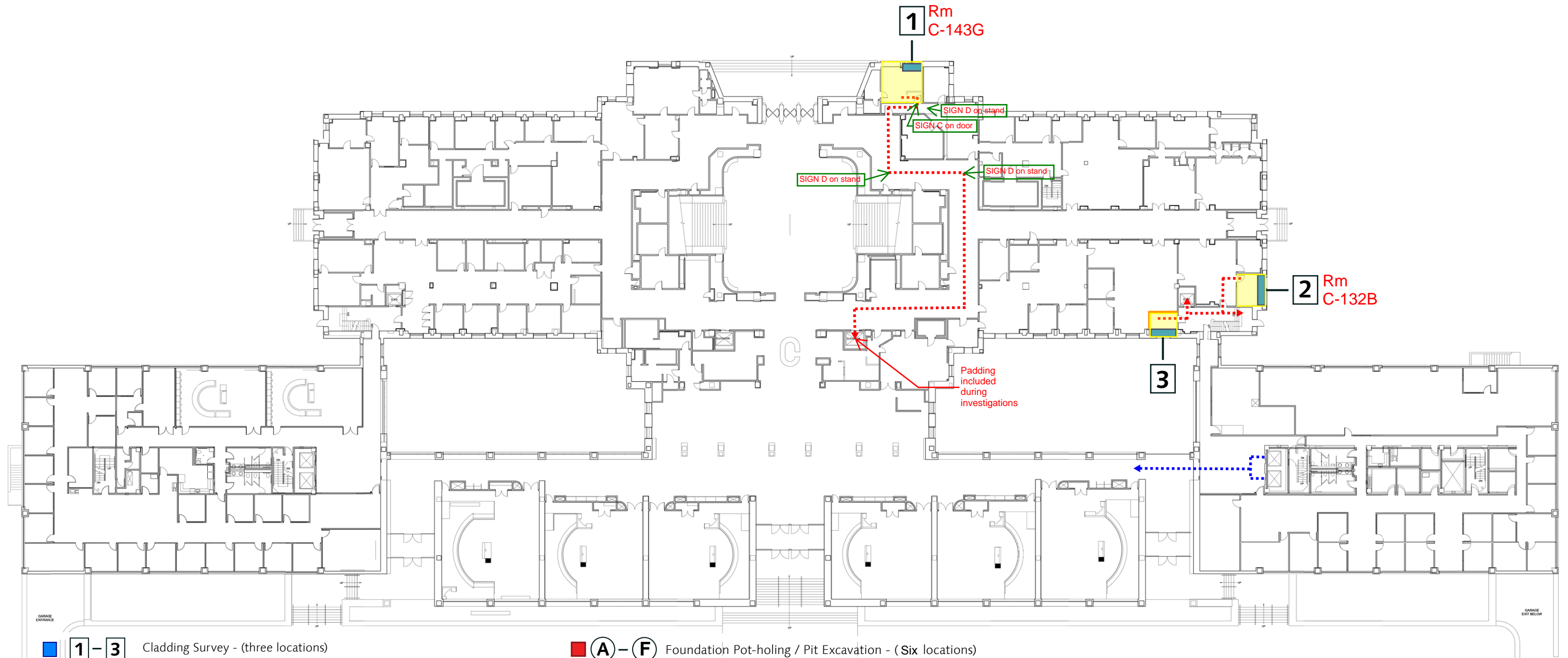
■ (A)-(F) Foundation Pot-holing / Pit Excavation - (Six locations)

Excavate pot-holes in the indicated locations and dimensions. Note geometry of footings, plinths, pedestals, etc. Determine/survey existing elevations of top and bottom of footings. Compare surveyed elevations with elevations indicated on original construction drawings.

LEGEND

- Path of Debris Travel
- Public Detour Route
- Alternate Fire Route
- Temporary Partition
- De-watering hose
- Safety Zone (Personal Protection Equipment [PPE] Required)
- Soil / Gravel / Equipment Laydown

LEVEL GROUND FLOOR



1 - 3 Cladding Survey - (three locations)

A - F Foundation Pot-holing / Pit Excavation - (Six locations)

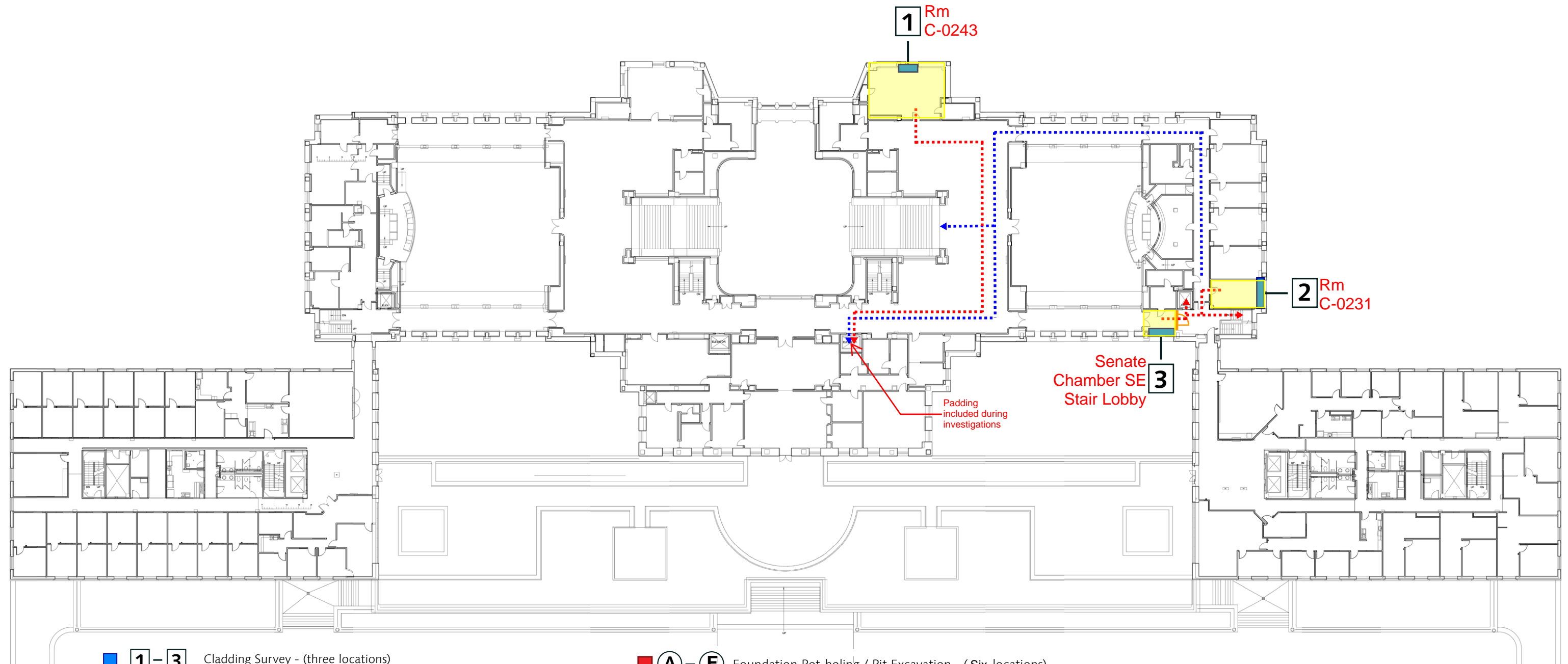
Expose and document representative vertical strips at three locations (encompassing levels as indicated on plans) on the interior side of the exterior wall. This will allow for visual confirmation of brick bracing wall construction and non-destructive location of anchors from brick wall to stone panels. The goal is to determine the size, spacing, and character of anchors and to allow a visual condition survey of the brick bracing wall. With these conditions exposed, we would also like to get the following information in several locations:

- Brick wall thickness (and number of wythes).
- Note brick wall layup to see if header courses exist to tie wythes of masonry together. Note spacing of header courses.
- Dimension of gap between brick wall and stone panel.
- Condition of wall at slab/beam soffit above and adjacent columns to observe if there are gaps or if the brick wall is tight to the concrete framing.

Excavate pot-holes in the indicated locations and dimensions. Note geometry of footings, plinths, pedestals, etc. Determine/survey existing elevations of top and bottom of footings. Compare surveyed elevations with elevations indicated on original construction drawings.

- LEGEND**
- Path of Construction Travel
 - Public Detour Route
 - Temporary Partition
 - Safety Zone (Personal Protection Equipment [PPE] Required)
 - Soil / Gravel / Equipment Laydown

LEVEL 1



■ 1-3 Cladding Survey - (three locations)

Expose and document representative vertical strips at three locations (encompassing levels as indicated on plans) on the interior side of the exterior wall. This will allow for visual confirmation of brick bracing wall construction and non-destructive location of anchors from brick wall to stone panels. The goal is to determine the size, spacing, and character of anchors and to allow a visual condition survey of the brick bracing wall. With these conditions exposed, we would also like to get the following information in several locations:

- Brick wall thickness (and number of wythes).
- Note brick wall layup to see if header courses exist to tie wythes of masonry together. Note spacing of header courses.
- Dimension of gap between brick wall and stone panel.
- Condition of wall at slab/beam soffit above and adjacent columns to observe if there are gaps or if the brick wall is tight to the concrete framing.

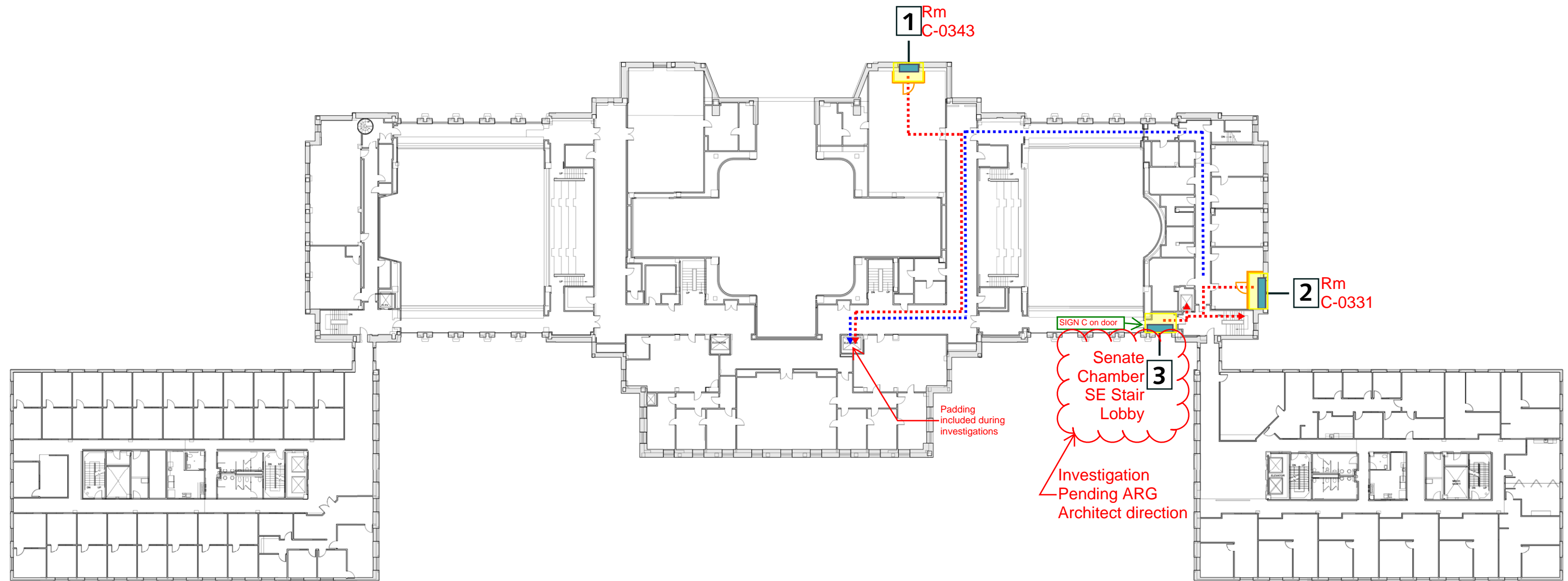
■ (A)-(F) Foundation Pot-holing / Pit Excavation - (Six locations)

Excavate pot-holes in the indicated locations and dimensions. Note geometry of footings, plinths, pedestals, etc. Determine/survey existing elevations of top and bottom of footings. Compare surveyed elevations with elevations indicated on original construction drawings.

LEGEND

-▶ Path of Construction Travel
-▶ Public Detour Route
- Temporary Partition
- Safety Zone (Personal Protection Equipment [PPE] Required)
- Soil / Gravel / Equipment Laydown

LEVEL 2



1-3 Cladding Survey - (three locations)

Expose and document representative vertical strips at three locations (encompassing levels as indicated on plans) on the interior side of the exterior wall. This will allow for visual confirmation of brick bracing wall construction and non-destructive location of anchors from brick wall to stone panels. The goal is to determine the size, spacing, and character of anchors and to allow a visual condition survey of the brick bracing wall. With these conditions exposed, we would also like to get the following information in several locations:

- Brick wall thickness (and number of wythes).
- Note brick wall layup to see if header courses exist to tie wythes of masonry together.
- Note spacing of header courses.
- Dimension of gap between brick wall and stone panel.
- Condition of wall at slab/beam soffit above and adjacent columns to observe if there are gaps or if the brick wall is tight to the concrete framing.

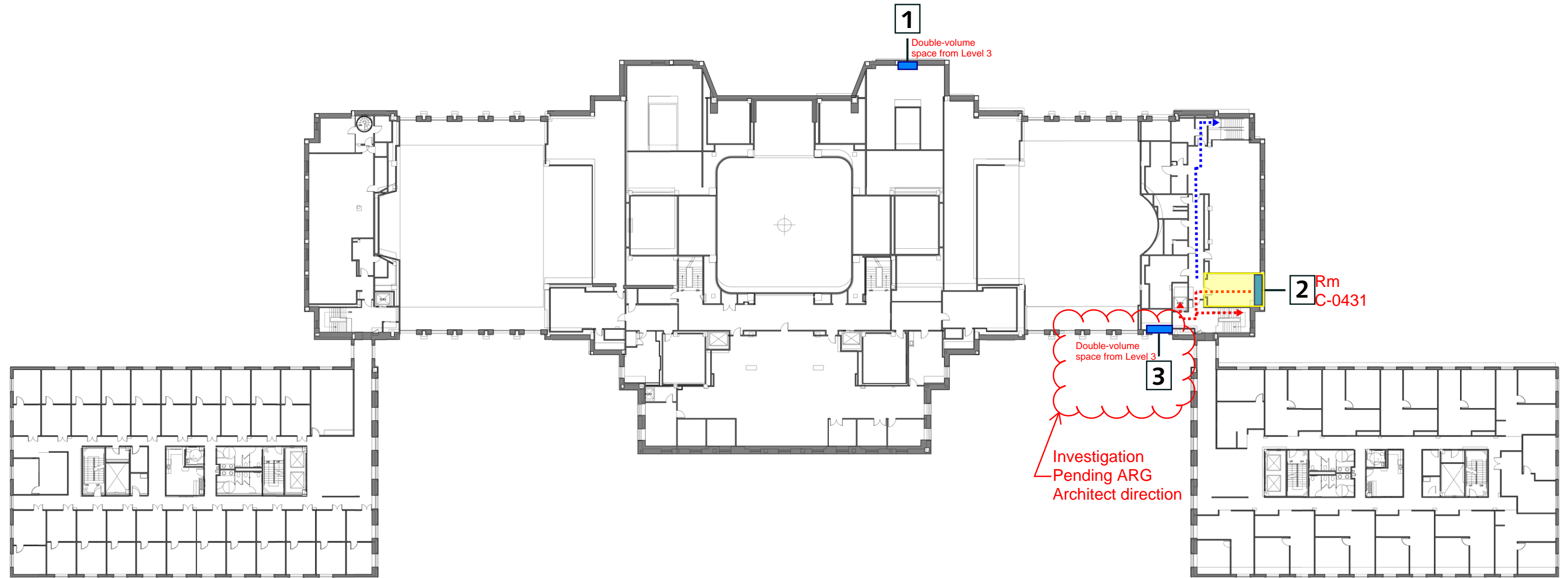
A-F Foundation Pot-holing / Pit Excavation - (Six locations)

Excavate pot-holes in the indicated locations and dimensions. Note geometry of footings, plinths, pedestals, etc. Determine/survey existing elevations of top and bottom of footings. Compare surveyed elevations with elevations indicated on original construction drawings.

LEGEND

- Path of Construction Travel
- Public Detour Route
- Temporary Partition
- Safety Zone (Personal Protection Equipment [PPE] Required)
- Soil / Gravel / Equipment Laydown

LEVEL 3



1-3 Cladding Survey - (three locations)

Expose and document representative vertical strips at three locations (encompassing levels as indicated on plans) on the interior side of the exterior wall. This will allow for visual confirmation of brick bracing wall construction and non-destructive location of anchors from brick wall to stone panels. The goal is to determine the size, spacing, and character of anchors and to allow a visual condition survey of the brick bracing wall. With these conditions exposed, we would also like to get the following information in several locations:

- Brick wall thickness (and number of wythes).
- Note brick wall layup to see if header courses exist to tie wythes of masonry together. Note spacing of header courses.
- Dimension of gap between brick wall and stone panel.
- Condition of wall at slab/beam soffit above and adjacent columns to observe if there are gaps or if the brick wall is tight to the concrete framing.

A-F Foundation Pot-holing / Pit Excavation - (Six locations)

Excavate pot-holes in the indicated locations and dimensions. Note geometry of footings, plinths, pedestals, etc. Determine/survey existing elevations of top and bottom of footings. Compare surveyed elevations with elevations indicated on original construction drawings.

LEGEND

- Path of Construction Travel
- Public Detour Route
- Temporary Partition
- Safety Zone (Personal Protection Equipment [PPE] Required)
- Soil / Gravel / Equipment Laydown

LEVEL 4