



## Notice of Work- Wireless Signal Survey

To: Capitol Building

From: Oregon State Capitol Renovation (OSCR) Team

Date: June 4, 2014

---

The following OSCR project team members will be working throughout the building:

- Several representatives from Sparling and Capitol Facility Services

### **Date and time of work:**

- Monday, June 9<sup>th</sup>, 2014 through Friday, June 13<sup>th</sup>, 2014
- Between the hours of 7:00 a.m. and 6:00 p.m. daily

### **Location of work:**

- The testing will be done throughout the Capitol.

**\*\* Please see the attached plan below for additional information\*\***

### **Work to be performed:**

- **The surveyors will split into two teams, both escorted by a Capitol Facility Services representative, and will be conducting a frequency and wireless local area network test utilizing a hand held testing device. Team members will also be identifying wireless access devices throughout the building.**
- Testing within each zone, outlined on the attached plan, will take approximately 4-7 minutes.
- 15-20 minutes prior to visiting office and work areas, the Capitol Facility Services representative will notify the next department/ office area of an approximate time in which the surveyors will be in their offices. If that time does not work for you/ your office, please let the Facility Services representative know what time the surveyors can return to conduct the survey.
- Some locations may be tested after hours as to prevent disruptions to sensitive activities. All afterhours testing will be done with a Capitol Facility Services representative present.

- Surveyors will begin surveying each floor on the West side of the building and work their way to the East. Each floor is anticipated to take approximately 1 day.
- The team is anticipating the following schedule, however this is subject to change based on space availability:
  - 1<sup>st</sup> floor- Monday, June 9<sup>th</sup>
  - 2<sup>nd</sup> Floor- Tuesday, June 10<sup>th</sup>
  - 3<sup>rd</sup> Floor- Wednesday, June 11<sup>th</sup>
  - 4<sup>th</sup> Floor- Thursday, June 12<sup>th</sup>
  - Ground Floor- Friday, June 13<sup>th</sup>

**Impacts:**

- The team will need to access office and work spaces to take the survey; however they should only be in the space for approximately 4-7 minutes.
- There should be very minimal noise impacts from this work.

**Purpose of work:**

- This work is being done to get a better understanding of the wireless signal within the building.

It is our goal to gather the above information in the most discreet method possible. Should any questions or concerns arise in the process of the work being conducted, we welcome you to contact us in Room 354 at 503.986.1190.

Thank you,

Jessica Lacasella

Project Communications Coordinator

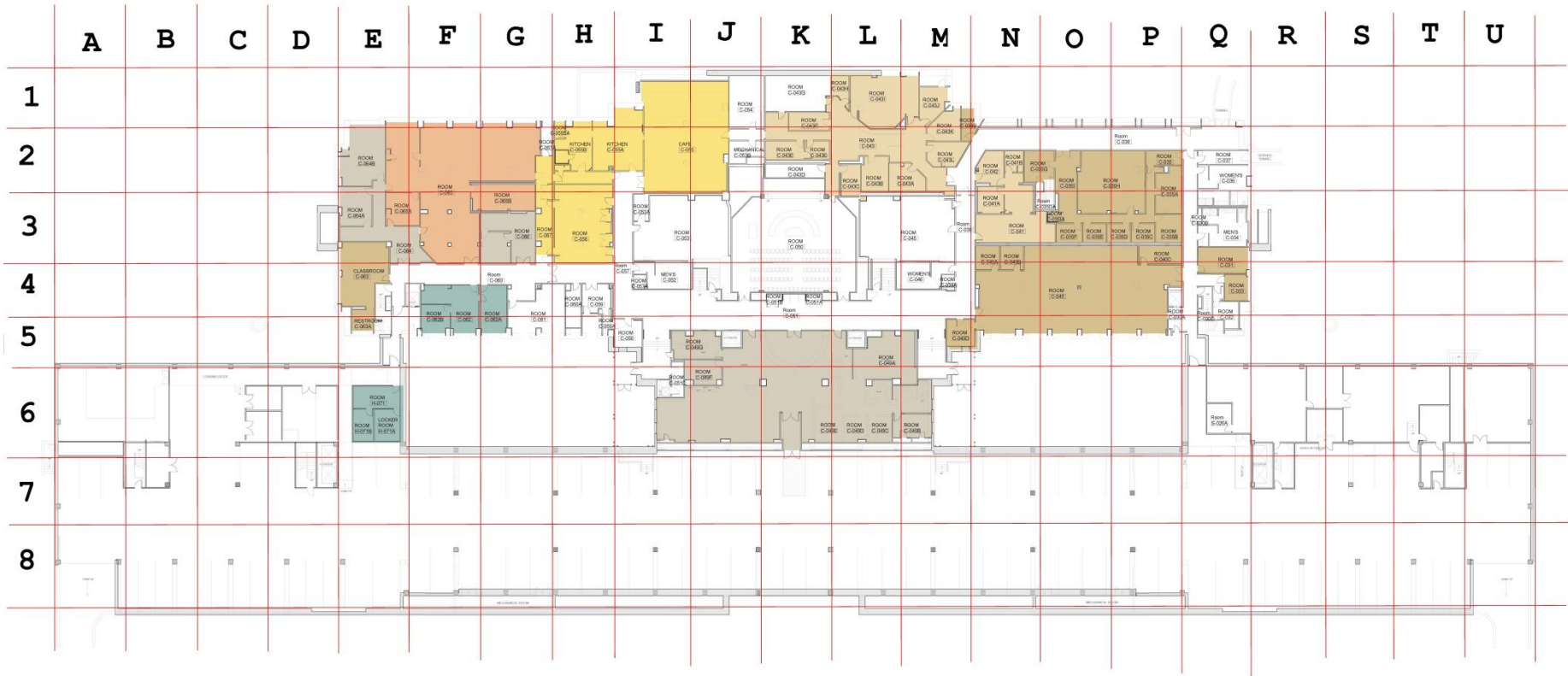
P: 503.986.1190 | Email: [jessica.lacasella@state.or.us](mailto:jessica.lacasella@state.or.us)

Wireless Testing Device that will be used during survey:



## Wireless Survey Plan

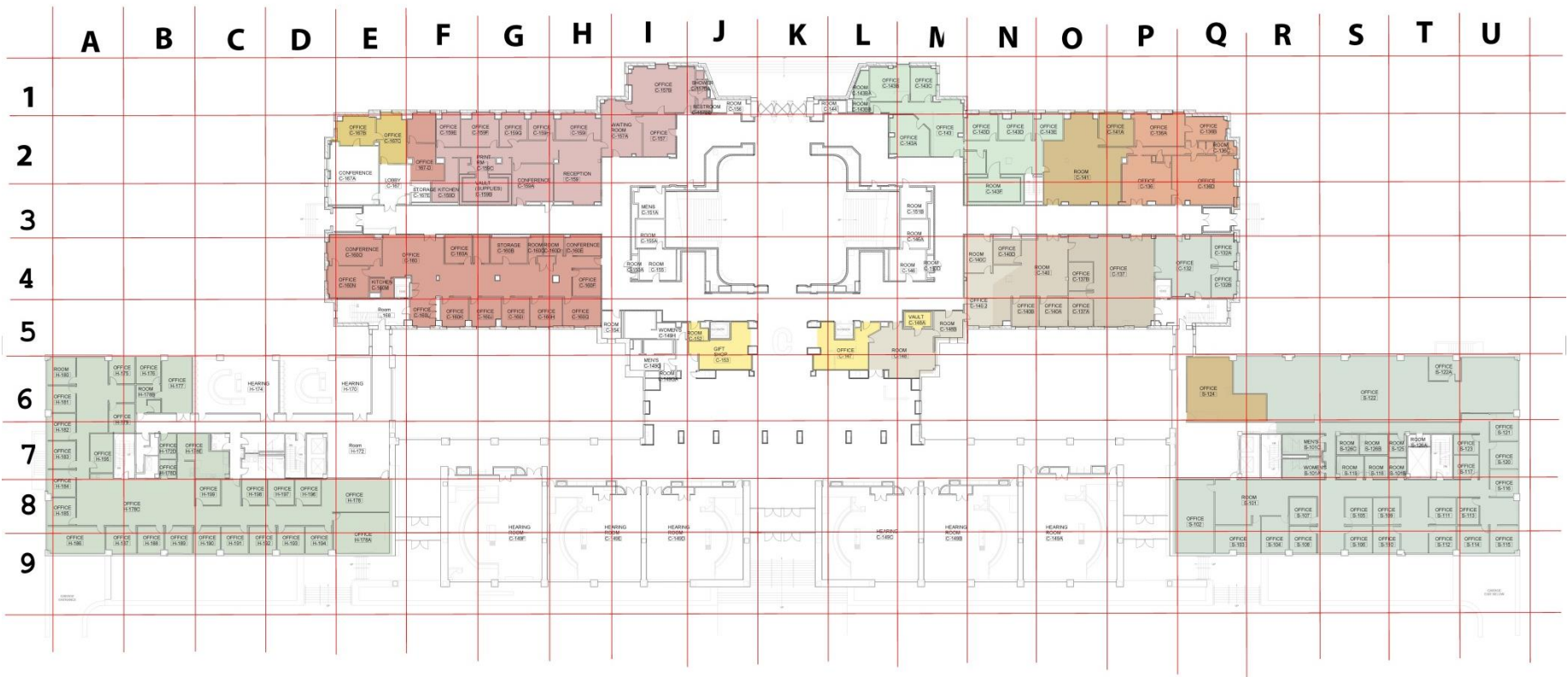
Each box is a considered a zone, i.e. A1, F2, etc.



- CAFE
- CAPITOL CLUB
- CAPITOL PRESS
- FACILITIES
- IS + MEDIA
- STATE POLICE

1 ROOM NUMBERS LEVEL G

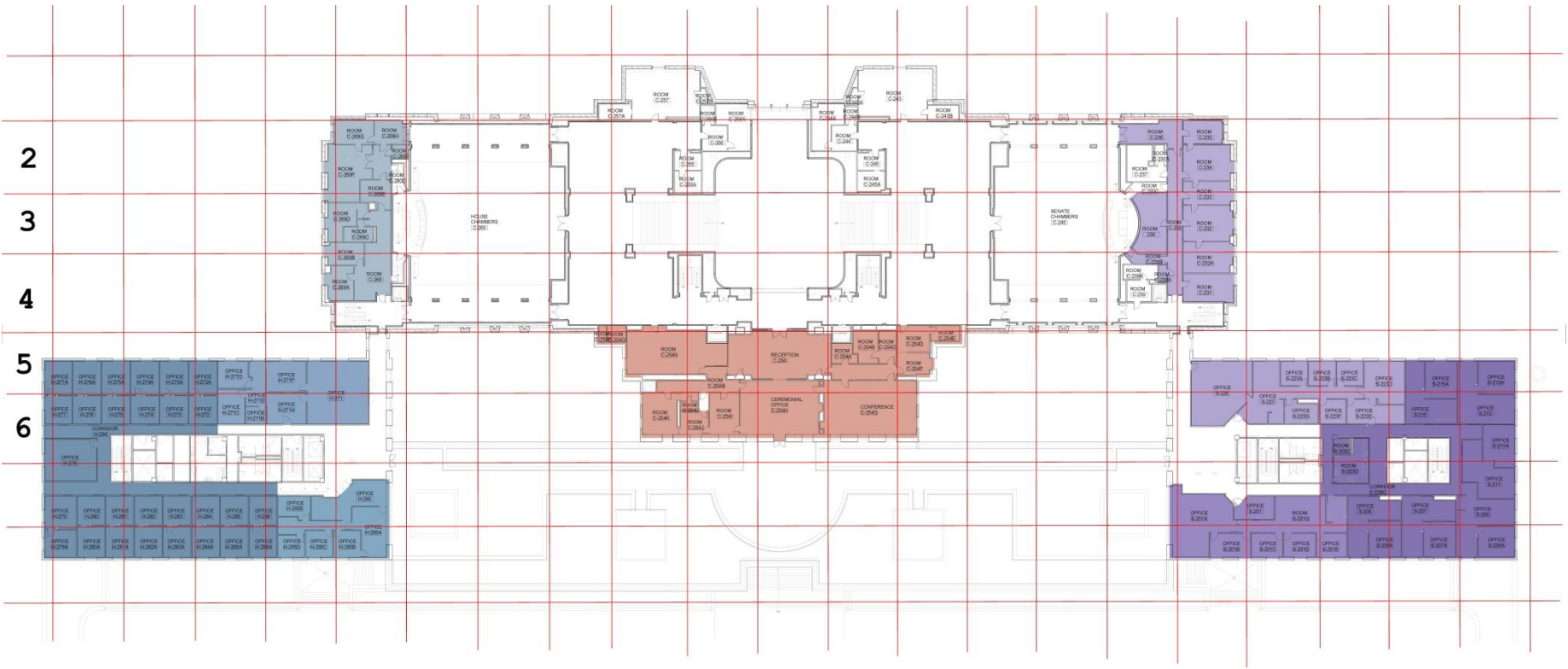
**SRG**



- EMPLOYEE SERVICES
- FINANCIAL SERVICES
- GOVERNOR
- INDIAN SERVICES
- IS + MEDIA
- LEGISLATIVE ADMINISTRATION
- LEGISLATIVE COUNSEL
- LEGISLATIVE FISCAL
- LEGISLATIVE REVENUE
- SECRETARY OF STATE
- STATE TREASURER
- VISITOR SERVICES

1 ROOM NUMBERS LEVEL 1





1 ROOM NUMBERS LEVEL 2  
10-1-10

SRG

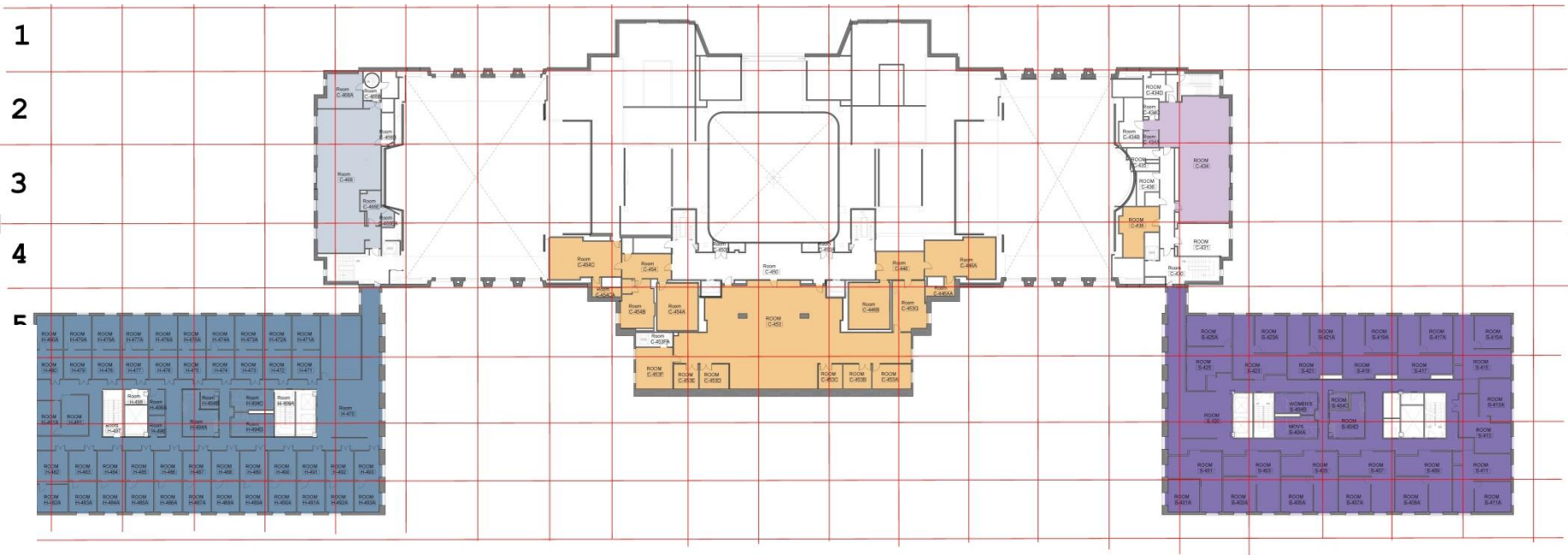




- COMMITTEE SERVICES
- GOVERNOR
- HOUSE MAJORITY
- HOUSE MAJORITY CAUCUS
- HOUSE MEMBERS
- HOUSE MINORITY
- SENATE MEMBERS
- SENATE MINORITY
- SENATE MINORITY CAUCUS

ROOM NUMBERS LEVEL 3





- COMMITTEE SERVICES
- HOUSE LOUNGE
- HOUSE MEMBERS
- SENATE LOUNGE
- SENATE MEMBERS

ROOM NUMBERS LEVEL 4

1/8" = 1'-0"

SRG