



Notice of Work

To: Capitol Building

From: Oregon State Capitol Renovation (OSCR) Team

Date: March 13, 2014

The following OSCR project team members will be conducting work on the exterior of the building and in specified locations within the Capitol:

- Several representatives from JE Dunn, ARG Architects, SRG Partnership and Capitol Facility Services

Date and time of work:

- **Work begins on Monday, March 17th, 2014 and will continue until the assessment is completed, approximately 2-3 weeks.**
- **Work will be done between the hours of 7:00 a.m. and 5:00 p.m. daily.**

Work to be performed:

- Two boom lifts will be delivered on Monday at approximately 7:00 a.m. and will be used to conduct the exterior assessment of the building.
- ARG and SRG Partnership will be conducting an exterior assessment of the building. Some of the items they will be assessing include existing conditions of windows and marble. The team will begin their assessment in the locations marked with a purple circle and work their way towards the front of the building.
- Concurrently, ARG will be conducting an interior assessment of doors and windows throughout the building. **This assessment includes windows and doors within all office spaces and work areas.** OSCR team members will be escorted by a Capitol Facility Services representative. They will be photographing each window, recording data into an iPad, and checking window operability. Each visit will take approximately 5 minutes. The team is tentatively scheduled to begin assessing in the main building on Monday, March 17th and by Thursday, March 20th, they will move into the wings.

**** Please note: the exterior assessment is weather dependent. If it is raining, the team will move inside to work assist with assessing doors and windows.**

Specific spaces to be accessed:

- Team members conducting the interior assessment will need access to all offices, windows and doors. Each visit will take approximately 5-10 minutes.
- The interior assessment will start in the main Capitol building, on the West side of the ground level. The team will work their way around each floor in a clockwise fashion. Upon completion, they will move to the next floor up and start in a similar manner- West end and clockwise. The team expects to be working in the wings by Thursday, March 20th.

Impacts of Work:

- The boom lifts will be delivered to the pull-through drop-off lane in front of the building, as outlined on the attached plan, between 7:00 a.m. and 8:00 a.m.
- While boom lifts are being delivered and positioned around the building, sidewalks may be closed for a short period of time (5-10 minutes) and foot traffic will be re-routed for safety purposes. A team member will be present to assist in re-routing.
- Throughout the exterior assessments, entrances/ exits of the building may be closed for short periods of time while the swing stages and boom lifts are positioned above these doorways. In the event that an entrance/ exit is closed, a team member will redirect you to the closest door.
- In the event that a boom lift is positioned above a sidewalk or blocking sidewalk access during the exterior assessment, foot traffic will be re-directed by a Capitol Facility Services representative and/ or a JE Dunn team member.
- The team is expecting to begin assessing the South side of the House and Senate buildings via boom lift on Wednesday, March 19th. They will start on the House side and move to the Senate. While these locations are being assessed, the sidewalk beneath the boom lift will be closed and foot traffic will be re-routed. Additionally, the parking spots outlined in red on the attached map will be closed while the assessment of these locations is being done.

Purpose of work:

- The assessments are to determine and document the existing condition of the building and assist in the design and planning of the renovation.

It is our goal to gather the above information in the most discreet method possible. Should any questions or concerns arise in the process of the work being conducted, we welcome you to contact us in Room 354 at 503.986.1190.

Thank you,

Jessica Lacasella

Project Communications Coordinator

P: 503.986.1190 | Email: jessica.lacasella@state.or.us

GENERAL NOTE

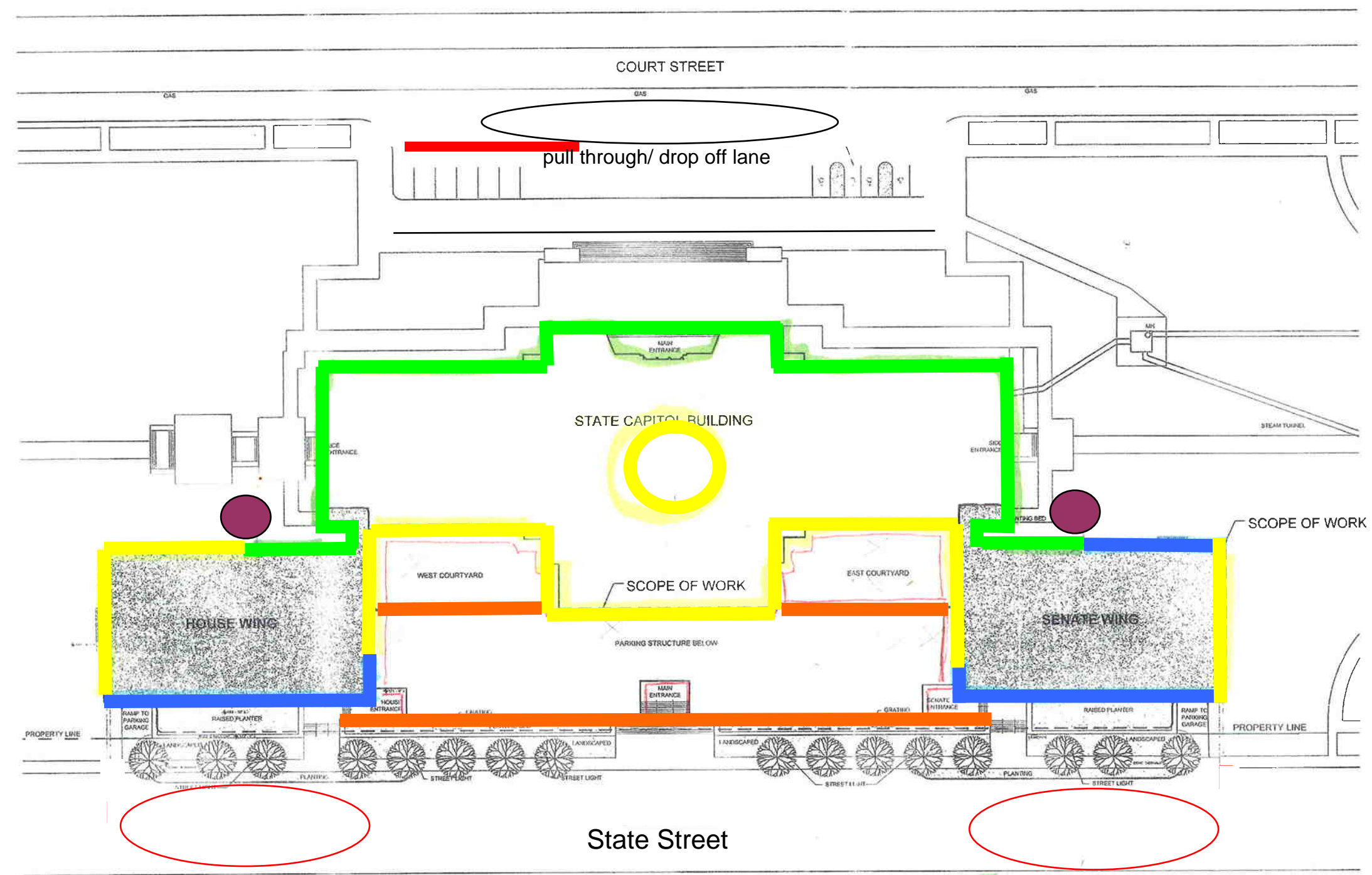
A. EXTENT OF WORK INCLUDES: PARKING STRUCTURE IN BASEMENT BELOW, FLOORS 1-4 AND PENTHOUSE OF HOUSE AND SENATE WINGS



PACKAGE 2 - BUILD OUT
OREGON STATE LEGISLATIVE ADMINISTRATION
CAPITOL WINGS RESTORATION

SITE PLAN

PROJECT NO.	022600	REVISIONS	
DATE	08/07	BY	EW
DATE		CHECKED	EW
A001			



- █ 60ft Boom Lift
- █ 85ft Boom Lift
- █ Swing Stage
- █ Boom Lift unloading location
- █ Survey From the Ground
- Parking closed on Wednesday, March 19th for assessments and Temporary sidewalk closures.
- Starting locations of surveyors

FROM GROUND / SWING STAGE